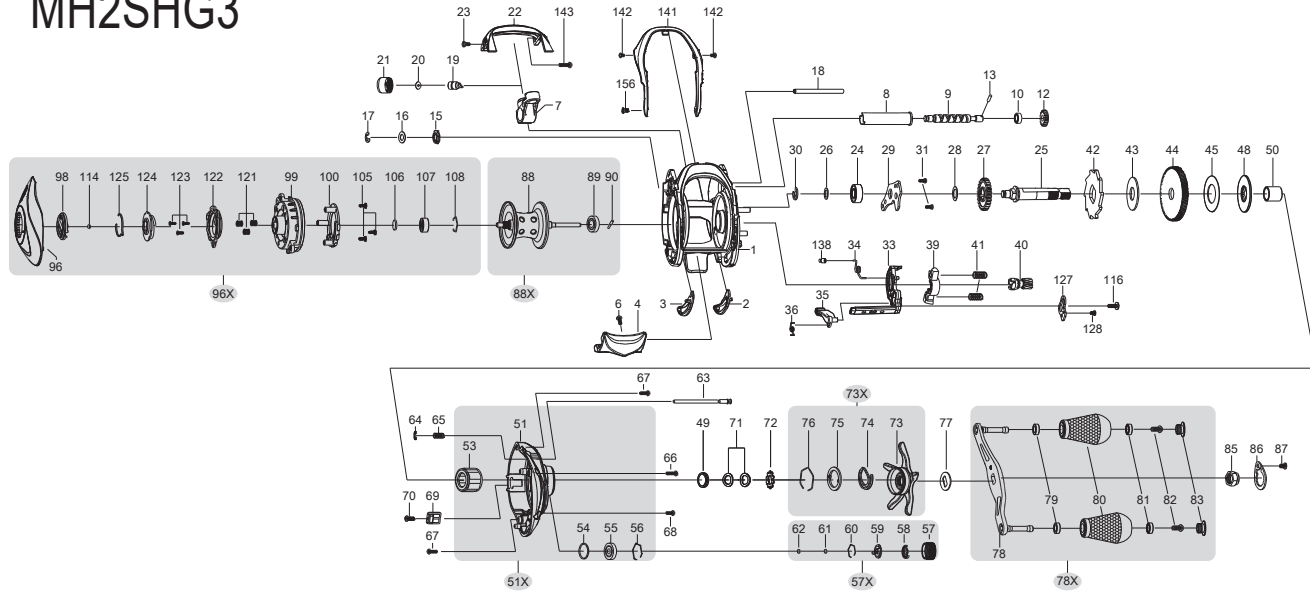
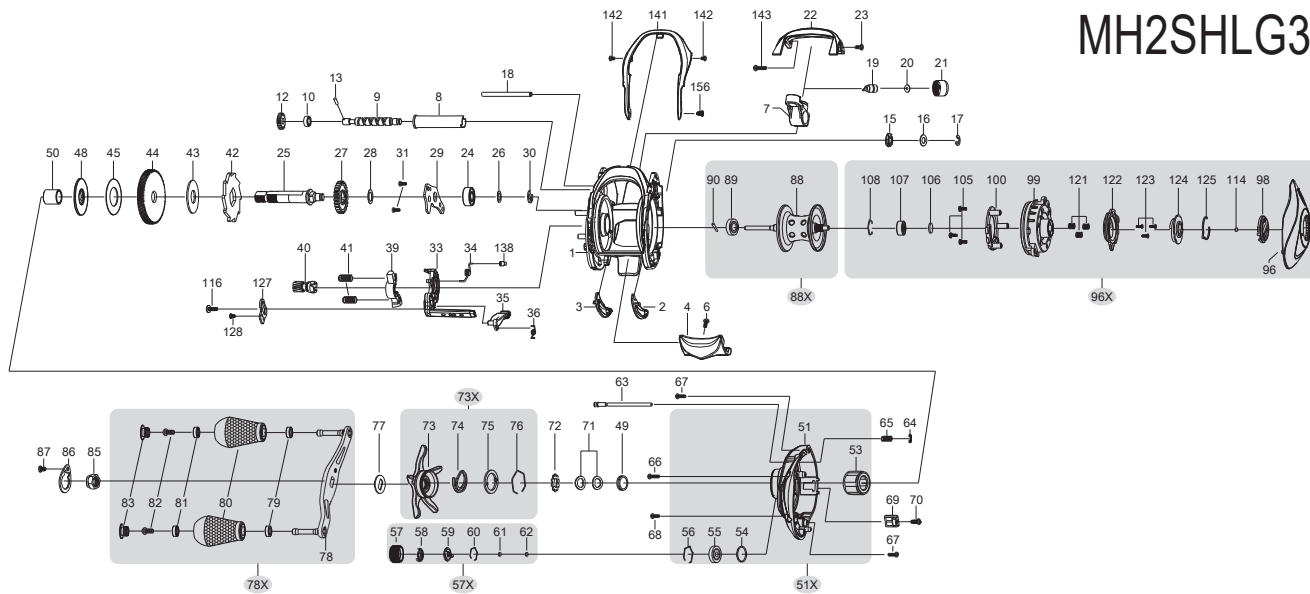


# MH2SHG3



# MH2SHLG3



NO.	PARTNAME	NO.	PARTNAME	NO.	PARTNAME
1	FRAME	48	DRAG WASHER-D2	85	HANDLE NUT
2	CLUTCH BAR PLATE-R	49	SLEEVE WASHER(OPTIONAL)	86	HANDLE NUT RETAINER
3	CLUTCH BAR PLATE-L	50	SLEEVE	87	SCREW
4	CLUTCH BAR	51	GEAR SIDE PLATE	88	SPOOL
6	CLUTCH BAR SCREW	51X	GEAR SIDE PLATE ASSEMBLY	88X	SPOOL COMPLETE
7	LEVEL WIND ASSEMBLY	53	ONE WAY CLUTCH	89	BALL BEARING
8	PIPE	54	O-RING	90	PIN
9	WORM SHAFT	55	BALL BEARING	96	PALM SIDE PLATE
10	BALL BEARING	56	BEARING RETAINER	96X	PALM SIDE PLATE ASSEMBLY
12	IDLER-S	57	CAST CONTROL CAP	98	CONTROL DIAL
13	WORM SHAFT PIN	57X	CAST CONTROL CAP ASSEMBLY	99	SPOOL COVER
15	WORM SHAFT BUSHING-B	58	CLICKER	100	MAGNET HOLDER ASSEMBLY
16	WORM SHAFT WASHER	59	CLICK PLATE	105	SPOOL COVER SCREW
17	E-RING	60	CLICK PLATE RETAINER	106	SPOOL SPACER-A
18	PILLAR	61	TENSION WASHER	107	BALL BEARING
19	LEVEL WIND PIN	62	SPOOL SPACER-B	108	BEARING RETAINER
20	SPACER(OPTIONAL)	63	LOCKING PIN	114	WASHER(OPTIONAL)
21	LEVEL WIND NUT	64	E-RING	116	CLUTCH CAM SCREW
22	FRONT COVER	65	LOCKING PIN SPRING	121	SLIDE CAM SPRING
23	FRONT COVER SCREW-A	66	GEAR SIDE COVER SCREW-A	122	SLIDE CAM-H
24	BALL BEARING	67	GEAR SIDE COVER SCREW-B	123	SLIDE CAM SCREW
25	CRANK SHAFT	68	GEAR SIDE COVER SCREW-C	124	SLIDE CAM-D
26	CRANK SHAFT WASHER(OPTIONAL)	69	LUBE PORT CAP	125	CLICK SPRING
27	IDLER-L	70	LUBE PORT CAP SCREW	127	LINK PLATE
28	IDLER-L WASHER-B	71	DRAG SPRING WASHER	128	LINK PLATE SCREW
29	BEARING PLATE	72	CLICK HOLDER	138	BUSHING-C
30	E-RING	73	STAR DRAG	141	HOOD
31	BEARING PLATE SCREW	73X	STAR DRAG COMPLETE	142	HOOD SCREW-A
33	CLUTCH CAM	74	CLICK LEAF SPRING	143	FRONT COVER SCREW-B
34	CLUTCH SPRING	75	CLICK PLATE	156	HOOD SCREW-B
35	KICK LEVER	76	CLICK PLATE RETAINER		
36	KICK LEVER SPRING	77	HANDLE WASHER		
39	PINION YOKE	78	HANDLE		
40	PINION GEAR	78X	HANDLE COMPLETE		
41	PINION YOKE SPRING	79	BALL BEARING		
42	RATCHET	80	HANDLE KNOB		
43	RATCHET WASHER	81	BALL BEARING		
44	DRIVE GEAR	82	HANDLE KNOB SCREW		
46	DRAG WASHER-D1	83	HANDLE KNOB CAP		