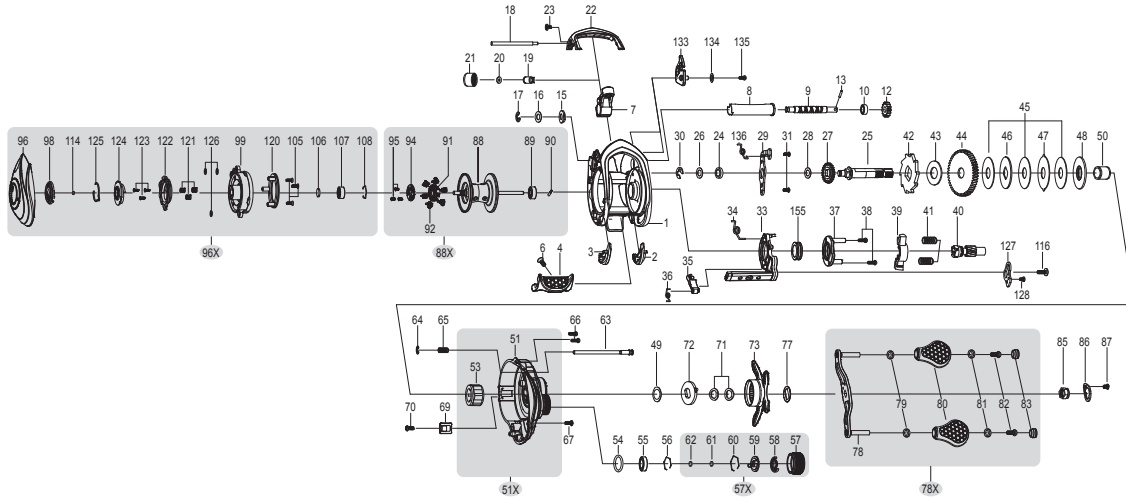
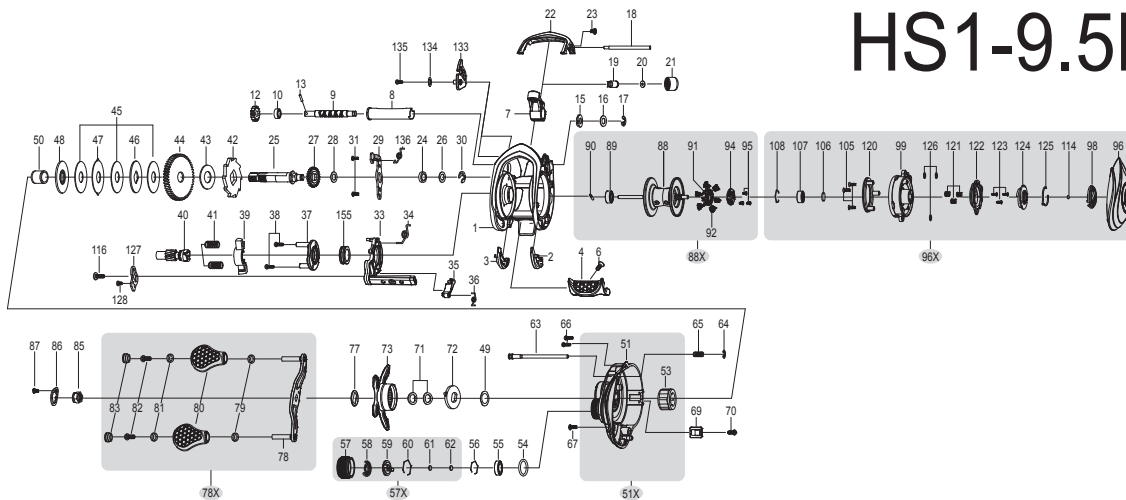


HS1-9.5



HS1-9.5L



NO.	PARTNAME	NO.	PARTNAME	NO.	PARTNAME
1	FRAME	44	DRIVE GEAR	87	SCREW
2	CLUTCH BAR PLATE-R	45	DRAG WASHER-L	88	SPOOL
3	CLUTCH BAR PLATE-L	46	DRAG WASHER-D1	88X	SPOOL COMPLETE
4	CLUTCH BAR ASSEMBLY	47	DRAG WASHER-A	89	BALL BEARING
6	CLUTCH BAR SCREW	48	DRAG WASHER-D2	90	PIN
7	LEVEL WIND ASSEMBLY	49	SLEEVE WASHER(OPTIONAL)	91	BRAKE HOLDER
8	PIPE	50	SLEEVE	92	BRAKE SHOE ASSEMBLY
9	WORM SHAFT	51	GEAR SIDE PLATE	94	BEAKE HOLDER PLATE
10	BALL BEARING	51X	GEAR SIDE PLATE ASSEMBLY	95	SCREW
12	IDLER-S	53	ONE WAY CLUTCH	96	PALM SIDE PLATE
13	WORM SHAFT PIN	54	O-RING	96X	PALM SIDE PLATE ASSEMBLY
15	WORM SHAFT BUSHING-B	55	BALL BEARING	98	CONTROL DIAL
16	WORM SHAFT WASHER	56	BEARING RETAINER	99	SPOOL COVER
17	E-RING	57	CAST CONTROL CAP	105	SPOOL COVER SCREW
18	PILLAR	57X	CAST CONTROL CAP ASSEMBLY	106	SPOOL SPACER-A
19	LEVEL WIND PIN	58	CLICKER	107	BALL BEARING
20	SPACER(OPTIONAL)	59	CLICK PLATE	108	BEARING RETAINER
21	LEVEL WIND NUT	60	CLICK PLATE RETAINER	114	WASHER(OPTIONAL)
22	FRONT COVER	61	TENSION WASHER	116	CLUTCH CAM SCREW
23	FRONT COVER SCREW	62	SPOOL SPACER-B	120	BRAKE PLATE HOLDER ASSEMBLY
24	BALL BEARING	63	LOCKING PIN	121	SLIDE CAM SPRING
25	CRANK SHAFT	64	E-RING	122	SLIDE CAM-H
26	CRANK SHAFT WASHER(OPTIONAL)	65	LOCKING PIN SPRING	123	SLIDE CAM SCREW
27	IDLER-L	66	GEAR SIDE COVER SCREW-A	124	SLIDE CAM-D
28	IDLER-L WASHER-B	67	GEAR SIDE COVER SCREW-B	125	CLICK SPRING
29	BEARING PLATE	69	LUBE PORT CAP	126	SPOOL COVER SPACER
30	E-RING	70	LUBE PORT CAP SCREW	127	LINK PLATE
31	BEARING PLATE SCREW	71	DRAG SPRING WASHER	128	LINK PLATE SCREW
33	CLUTCH CAM	72	CLICK PLATE ASSEMBLY	133	HOOK HOLDER
34	CLUTCH SPRING	73	STAR DRAG	134	HOOK HOLDER WASHER
35	KICK LEVER	77	HANDLE WASHER	135	HOOK HOLDER SCREW
36	KICK LEVER SPRING	78	HANDLE	136	HOOK HOLDER SPRING
37	CAM PLATE	78X	HANDLE COMPLETE	155	BUSH
38	CAM PLATE SCREW	79	BALL BEARING		
39	PINION YOKE	80	HANDLE KNOB		
40	PINION GEAR	81	BALL BEARING		
41	PINION YOKE SPRING	82	HANDLE KNOB SCREW		
42	RATCHET	83	HANDLE KNOB CAP		
43	RATCHET WASHER	85	HANDLE NUT		
		86	HANDLE NUT RETAINER		