

NO PART NAME

- 1 BODY
- 2 REAR CAP
- 3 SCREW
- 4 BALL BEARING
- 5 WASHER
- 6 OSCILLATION GEAR
- 7 SCREW
- 8 OSCILLATION SLIDER
- 9 SCREW
- 10 OSCILLATION PLATE
- 11 SCREW
- 12 BALL BEARING
- 13 DRIVE GEAR

NO PART NAME

- 14 WASHER
- 15 WASHER
- 16 BALL BEARING
- 17 BODY SIDE PLATE
- 18 SCREW
- 19 SCREW
- 20 ANTI-REVERSE BUTTON
- 21 SPRING
- 22 ANTI-REVERSE
- 23 SPRING
- 24 BUSHING
- 25 PINION GEAR
- 26 ONE WAY CLUTCH

NO PART NAME

- 27 CLUTCH BUSHING
- 28 BALL BEARING
- 29 MAIN SHAFT
- 30 BODY CORE CAP
- 31 SCREW
- 32 ROTOR BREAK
- 33 WATER RESISTANCE PLATE
- 34 ROTOR
- 35 ROTOR DECORATION PLATE
- 36 ROTOR DECORATION PLATE
- 37 KICK LEVER
- 38 SPRING
- 39 BAIL ARM SUPPORT PIN

NO PART NAME

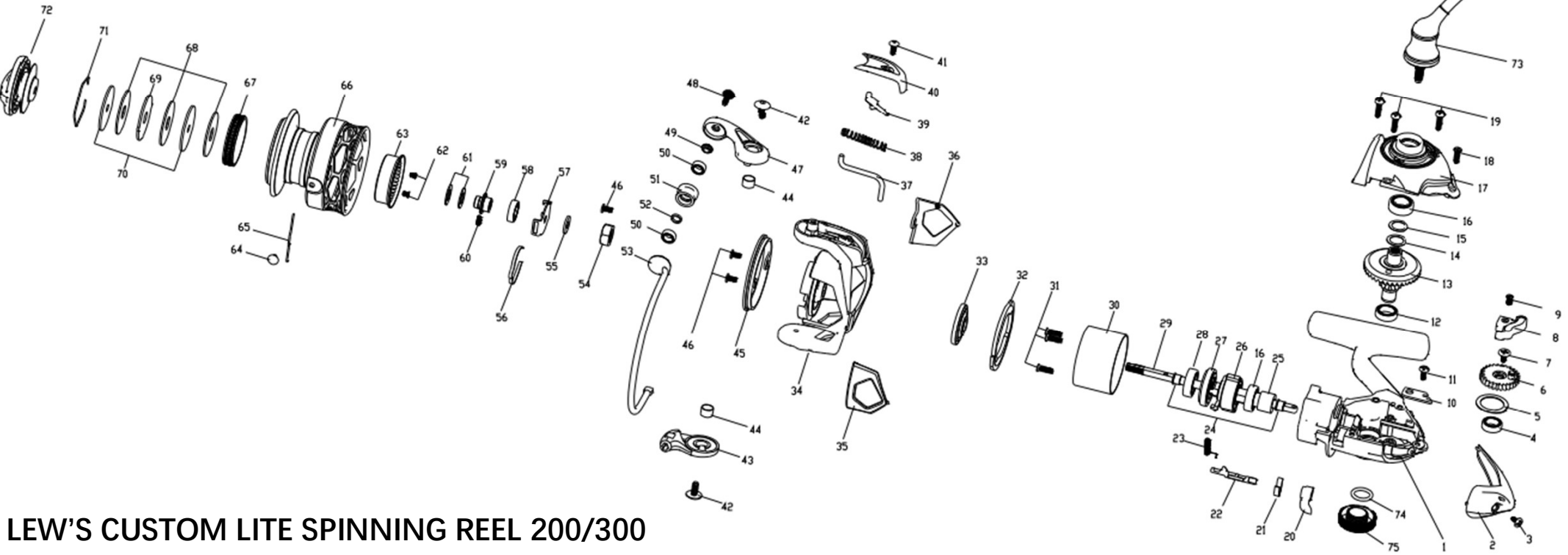
- 40 BAIL ARM COVER
- 41 SCREW
- 42 SCREW
- 43 BAIL HOLDER
- 44 BUSHING
- 45 ANTI-TANGLING RING
- 46 SCREW
- 47 BAIL ARM
- 48 SCREW
- 49 WASHER
- 50 BALL BEARING
- 51 LINE ROLLER

NO PART NAME

- 52 WASHER
- 53 BAIL WIRE
- 54 ROTOR NUT
- 55 WASHER
- 56 SPRING
- 57 CLICK PLATE
- 58 BALL BEARING
- 59 MAIN SHAFT SLEEVE
- 60 SCREW
- 61 WASHER
- 62 SCREW
- 63 CLICK CAGE

NO PART NAME

- 64 LINE CLIP
- 65 SPRING
- 66 SPOOL
- 67 BRAID READY RING
- 68 DRAG WASHER
- 69 EARED DRAG WASHER
- 70 METAL DRAG WASHER
- 71 SPRING
- 72 DRAG KNOB
- 73 HANDLE
- 74 SEAL
- 75 HANDLE CAP



LEW'S CUSTOM LITE SPINNING REEL 200/300