



# Mr. Catfish®

## Cat Series

### CC60



Mr Catfish® Cat Series Reels are designed for  
**anglers looking for serious  
 equipment for catfishing.**



# Mr. Catfish®

## Cat Series CC60

### Reel Specifications

Model	Weight	Ball Bearings	Gear Ratio	Line Capacity	IPT
CC60	11.2 oz.	2+1	5.2:1	160 yd./20 lb.	23.2"

#### FEATURES:

- Aluminum frame
- Machined aluminum spool
- All brass gearing
- 3-Bearing System
- Zero-Reverse Anti-Reverse
- Anodized aluminum sideplates
- Loud on/off bait clicker
- Smooth, fully adjustable metal star drag
- Pre-spooled with 15 lb. Mr Catfish® Premium Mono

### Maintenance and Care

While applying lubricant to your Mr Catfish® reel, avoid using multi-purpose oil. Use lightweight silicone based oils or greases made for fishing reels. Apply oil to all bearings, the crank shaft, and the worm gear. Apply grease to the bushings, pinion gears, drive gears, and crank gears.

After usage your reel should be inspected for dirt or sand and cleaned if excessive buildup is present. If your reel has come in contact with saltwater it is important to flush all parts with water, dry and re-lubricate your reel. Through diligent cleaning and maintenance your Mr Catfish® reel will provide you with years of reliability and sound performance.

For professional cleaning and maintenance send your reel postage prepaid to:

LEW'S® 3031 N. Martin, Springfield, MO 65803

877-470-5397 lews.coms

### One Year Limited Warranty

Mr Catfish® Warrants its products<sup>1</sup> to withstand normal<sup>2</sup> use for the purpose designed and intended when manufactured for a period of one (1) year from the original retail sale date to the original retail consumer. Mr Catfish® will at its option repair or replace<sup>3</sup> Mr Catfish® products when required for the warranty period and return<sup>4</sup> the product to the owner at no additional<sup>5</sup> cost to the owner.

<sup>1</sup>Numerous products have been manufactured under variations of the Mr Catfish® name and under the Mr Catfish® Logo by multiple businesses in the past years. This warranty is specifically for products manufactured on behalf of Mr Catfish® of Springfield, Missouri USA since March 1, 2011. Mr Catfish® products manufactured by or on behalf of other entities prior to March 1, 2011 are not covered by this warranty. In all circumstances, this Warranty is Limited in Value to the original retail value of the product and is limited to actual damage to the Mr Catfish® product and only the Mr Catfish® product. <sup>2</sup>Loss of a product, and loss/damage of a product or parts due to the attempted repair or servicing of a Mr Catfish® product by any person or business other than Mr Catfish® or Mr Catfish® Authorized Warranty Service Agent, and damage caused by or resulting from abuse, misuse, lack of recommended maintenance, accident, acts of God, and shipping damages occurring in transit to Mr Catfish® or Mr Catfish® Authorized Agent are outside the scope of Mr Catfish® Limited Warranty and will be repaired through Mr Catfish® after warranty services at the expense of the consumer. <sup>3</sup>Any products replaced by Mr Catfish® will be new or remanufactured by a Mr Catfish® Authorized Agent with the same or next model upgrade product. <sup>4</sup>Mr Catfish® will return warranted products to the consumer by reasonable means as determined by Mr Catfish®. <sup>5</sup>Express or expedited services are the responsibility of the consumer as is sending the product to Mr Catfish® or Mr Catfish® Authorized Agent, for Warranty Service. Mr Catfish® and Mr Catfish® Service Agents as authorized by Mr Catfish® are the sole agents authorized to repair or replace Mr Catfish® products under the terms of this warranty. Only written changes by an officer of Mr Catfish® can alter the terms or conditions of this warranty.

This warranty gives you specific legal rights including additional rights extended by some states which do not allow certain exclusions and limitations. Any action brought against Mr Catfish® for the purpose of settling a warranty dispute shall be brought and litigated in the State of Missouri, County of Greene.



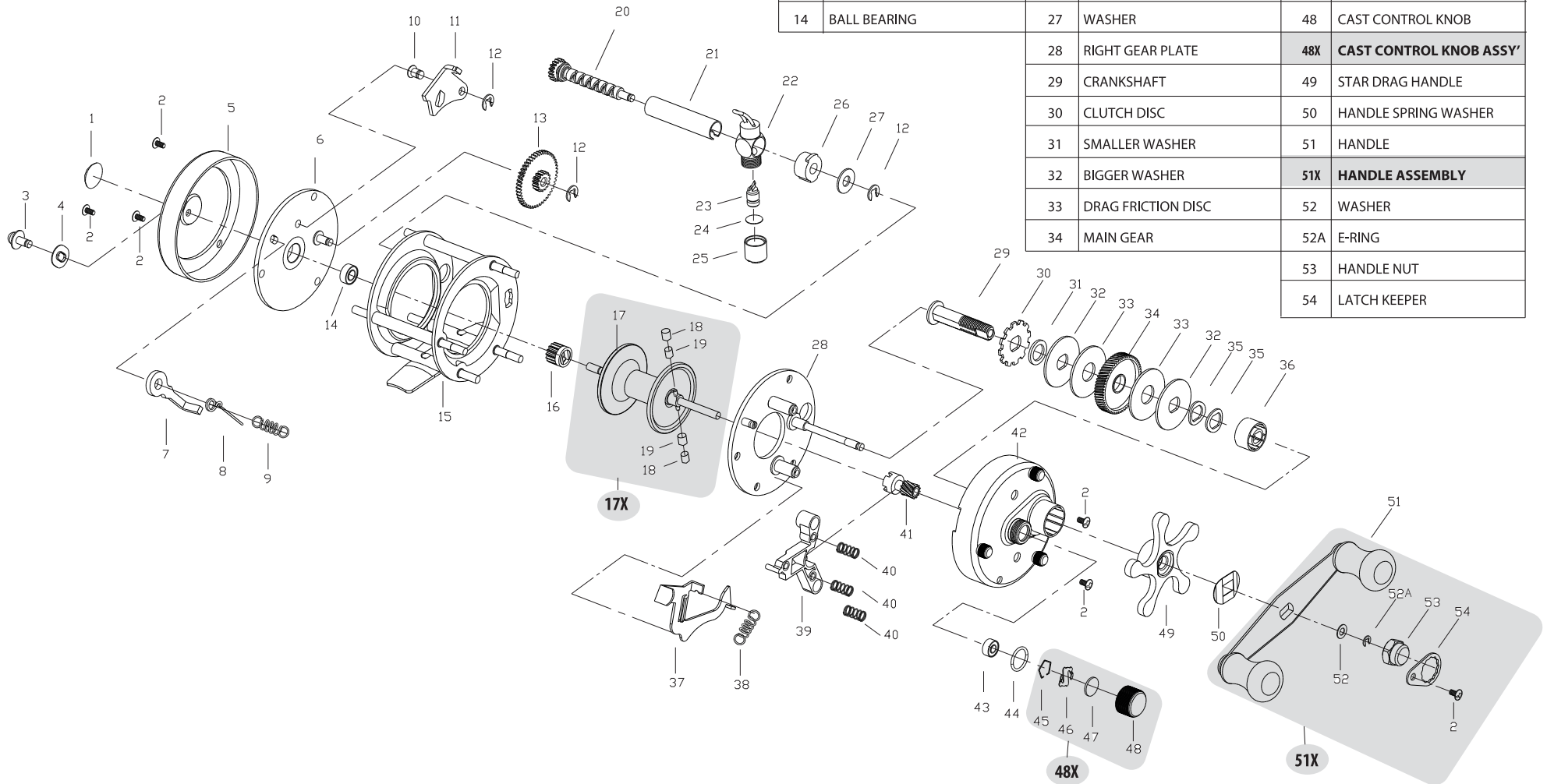
# Mr. Catfish®

## Cat Series CC60

To remove sideplate unscrew side-plate screws pry front cover away from body to access components

For professional cleaning and maintenance  
send your reel postage prepaid to:

Lew's 3031 N. Martin Ave.  
Springfield, MO 65803  
Phone: 877-470-5397  
or 417-522-1093  
FAX: 1-417-881-5387  
lews.com



KEY NO.	PARTS NAME	KEY NO.	PARTS NAME	KEY NO.	PARTS NAME
1	LABEL	15	MAIN BODY ASSEMBLY	35	DRAG SPRING WASHER
2	SCREW	16	LEVEL WIND PINION GEAR	36	ANTI-REVERSE BALL BEARING
3	BAIT CLICKER BUTTON	17	SPOOL	37	THUMB BUTTON
4	BAIT CLICKER BUTTON WASHER	<b>17X</b>	<b>SPOOL ASSEMBLY</b>	38	LATCH SPRING
5	LEFT SIDEPLATE	18	FRICTION BRAKE SHOE	39	YOKE
6	LEFT GEAR PLATE	19	CENTRIFUGAL BRAKE SHOE	40	YOKE SPRING
7	PAWL	20	WORM SHAFT	41	PINION GEAR
8	PAWL SPRING	21	LINE GUARD	42	RIGHT SIDE PLATE
9	PAWL TENSION SPRING	22	LINE GUIDE	43	BALL BEARING
10	LOCATION PILLAR	23	LINE GUIDE PAWL	44	O-RING
11	PAWL WASHER	24	WASHER	45	RETAINING CLIP
12	E-RING	25	LINE GUIDE PAWL CAP	46	CAST CONTROL BRASS WASHER
13	LEVELWIND GEAR	26	BUSHING	47	CAST CONTROL RUBBER WASHER
14	BALL BEARING	27	WASHER	48	CAST CONTROL KNOB
		28	RIGHT GEAR PLATE	<b>48X</b>	<b>CAST CONTROL KNOB ASSY'</b>
		29	CRANKSHAFT	49	STAR DRAG HANDLE
		30	CLUTCH DISC	50	HANDLE SPRING WASHER
		31	SMALLER WASHER	51	HANDLE
		32	BIGGER WASHER	<b>51X</b>	<b>HANDLE ASSEMBLY</b>
		33	DRAG FRICTION DISC	52	WASHER
		34	MAIN GEAR	52A	E-RING
				53	HANDLE NUT
				54	LATCH KEEPER