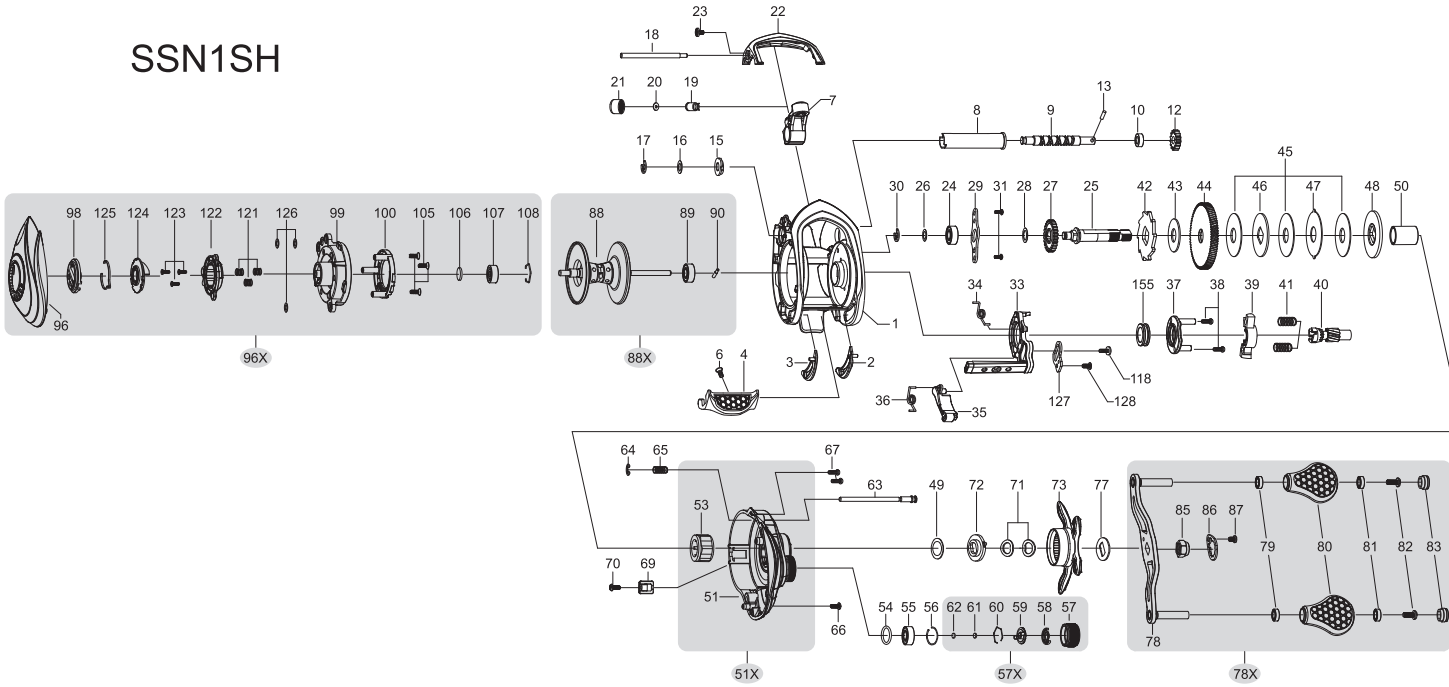
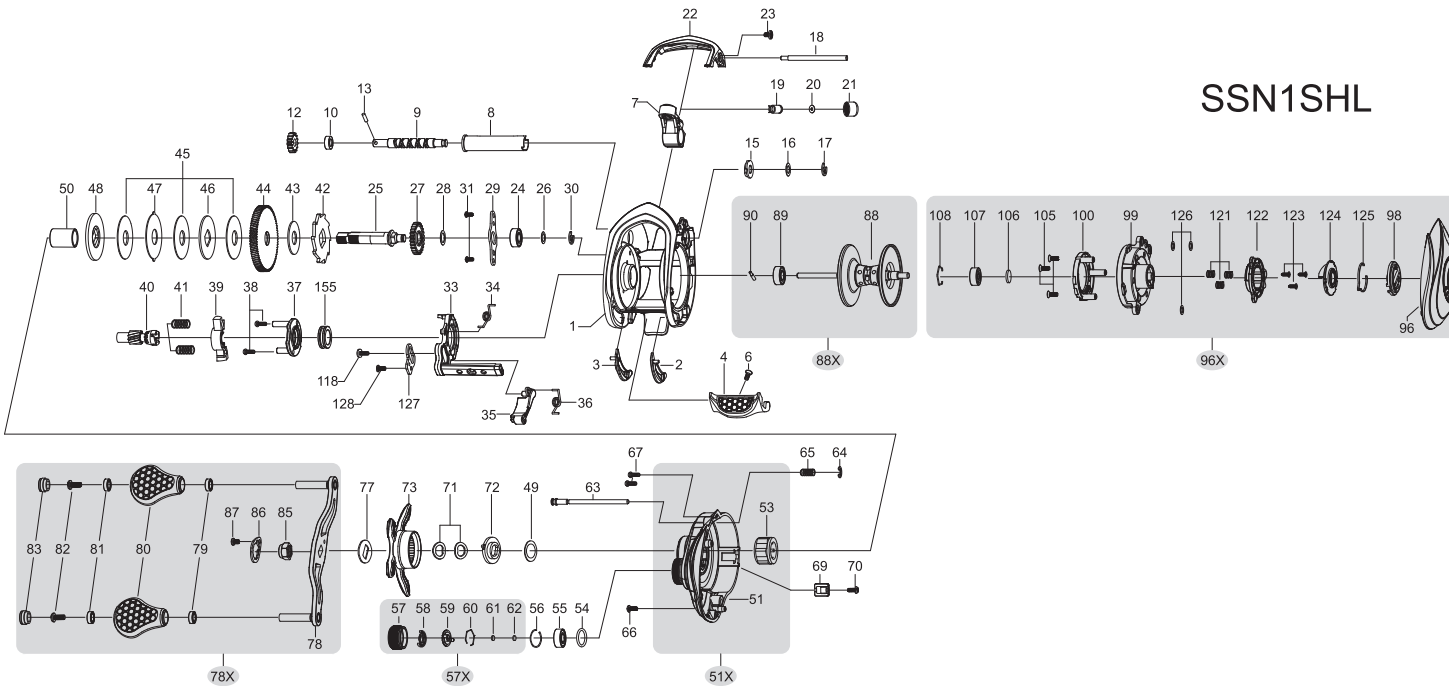


SSN1SH



NO.	PARTNAME	NO.	PARTNAME	NO.	PARTNAME
1	FRAME	41	PINION YOKE SPRING (*2)	79	BUSHING (*2)
2	CLUTCH BAR PLATE (R)	42	RATCHET	80	HANDLE KNOB (*2)
3	CLUTCH BAR PLATE (L)	43	RATCHET WASHER	81	BALL BEARING (*2)
4	CLUTCH BAR ASSEMBLY	44	DRIVE GEAR	82	HANDLE KNOB SCREW (*2)
6	CLUTCH BAR SCREW	45	DRAG WASHER (L*3)	83	HANDLE KNOB CAP (*2)
7	LEVEL WIND ASSEMBLY	46	DRAG WASHER (D1)	85	HANDLE NUT
8	PIPE	47	DRAG WASHER (A)	86	HANDLE NUT RETAINER
9	WORM SHAFT	48	DRAG WASHER (D2)	87	SCREW
10	BUSHING	49	SLEEVE WASHER(OPTIONAL)	88	SPOOL
12	IDLER (S)	50	SLEEVE	88X	SPOOL ASSEMBLY
13	WORM SHAFT PIN	51	GEAR SIDE PLATE	89	BALL BEARING
15	WORM SHAFT BUSHING (B)	51X	GEAR SIDE PLATE ASSEMBLY	90	PIN
16	WORM SHAFT WASHER(OPTIONAL)	53	ONE WAY CLUTCH	96	PALM SIDE PLATE
17	E-RING	54	O-RING	96X	PALM SIDE PLATE ASSEMBLY
18	PILLAR	55	BALL BEARING	98	CONTROL DIAL
19	LEVEL WIND PIN	56	BEARING RETAINER	99	SPOOL COVER
20	SPACER(OPTIONAL)	57	CAST CONTROL CAP	100	MAGNET HOLDER ASSEMBLY
21	LEVEL WIND NUT	57X	CAST CONTROL CAP ASSEMBLY	105	SPOOL COVER SCREW (*3)
22	FRONT COVER	58	CLICKER	106	SPOOL SPACER (A)
23	FRONT COVER SCREW	59	CLICK PLATE	107	BALL BEARING
24	BALL BEARING	60	CLICK PLATE RETAINER	108	BEARING RETAINER
25	CRANK SHAFT	61	TENSION WASHER	118	CLUTCH SCREW
26	IDLER (L) WASHER (A)	62	SPOOL SPACER (B)	121	SLIDE CAM SPRING (*3)
27	IDLER (L)	63	LOCKING PIN	122	SLIDE CAM (M)
28	IDLER (L) WASHER (B)	64	E-RING	123	SLIDE CAM SCREW (*3)
29	BEARING PLATE	65	LOCKING PIN SPRING	124	DIAL CAM (M)
30	E-RING	66	GEAR SIDE COVER SCREW (A)	125	CLICK SPRING
31	BEARING PLATE SCREW (*2)	67	GEAR SIDE COVER SCREW (B*2)	126	SPOOL COVER SPACER (*3)
33	CLUTCH CAM	69	LUBE PORT CAP	127	LINK PLATE
34	CLUTCH SPRING	70	LUBE PORT CAP SCREW	128	LINK PLATE SCREW
35	KICK LEVER	71	DRAG SPRING WASHER (*2)	155	BUSH
36	KICK LEVER SPRING	72	CLICK PLATE ASSEMBLY		
37	CAM PLATE	73	STAR DRAG		
38	CAM PLATE SCREW (*2)	77	HANDLE WASHER		
39	PINION YOKE	78	HANDLE		
40	PINION GEAR	78X	HANDLE ASSEMBLY		

SSN1SHL



SSN1SH

Key #	Description	Order ID #		Key #	Description	Order ID #
1	FRAME	DY-104350020		55	BALL BEARING	DY-102381010
2	CLUTCH BAR PLATE-R	DY-102881010		56	BEARING RETAINER	DY-104461010
3	CLUTCH BAR PLATE-L	DY-102882010		57X	CAST CONTROL CAP ASSEMBLY	DY-U02254151
4	CLUTCH BAR ASSEMBLY	DY-102883090		58	CLICKER	DY-101674011
6	CLUTCH BAR SCREW	DY-101507030		59	CLICK PLATE	DY-101675011
7	LEVEL WIND ASSEMBLY	DY-103715010		60	CLICK PLATE RETAINER	DY-101543012
8	PIPE	DY-101406010		61	TENSION WASHER	DY-100073011
9	WORM SHAFT	DY-100017013		62	SPOOL SPACER-B	DY-100074011
10	BUSHING	DY-102605010		63	LOCKING PIN	DY-102903020
12	IDLER-S	DY-100019010		64	E-RING	DY-100621010
13	WORM SHAFT PIN	DY-100020010		65	LOCKING PIN SPRING	DY-101308010
15	WORM SHAFT BUSHING-B	DY-102438010		66	GEAR SIDE COVER SCREW-A	DY-100035020
16	WORM SHAFT WASHER	DY-100539030		67	GEAR SIDE COVER SCREW-B	DY-100028020
17	E-RING	DY-100047010		69	LUBE PORT CAP	DY-101698300
18	PILLAR	DY-104359010		70	LUBE PORT CAP SCREW	DY-101507010
19	LEVEL WIND PIN	DY-100464011		71	DRAG SPRING WASHER	DY-100088010
20	SPACER(OPTIONAL)	DY-100025020		72	CLICK PLATE ASSEMBLY	DY-U00188030
21	LEVEL WIND NUT	DY-100288021		73	STAR DRAG	DY-104356080
22	FRONT COVER	DY-104353010		77	HANDLE WASHER	DY-100933010
23	FRONT COVER SCREW	DY-103235020		78X	HANDLE COMPLETE	DY-101806340
24	BALL BEARING	DY-104542010		79	BUSHING	DY-100196010
25	CRANK SHAFT	DY-104374010		80	HANDLE KNOB	DY-103807010
26	IDLER-L WASHER-A	DY-100647050		81	BALL BEARING	DY-104543010
27	IDLER-L	DY-101938020		82	HANDLE KNOB SCREW	DY-100180010
28	IDLER-L WASHER-B	DY-100646010		83	HANDLE KNOB CAP	DY-100181050
29	BEARING PLATE	DY-104409010		85	HANDLE NUT	DY-100319170
30	E-RING	DY-100047010		86	HANDLE NUT RETAINER	DY-103642030
31	BEARING PLATE SCREW	DY-100028070		87	SCREW	DY-101202020
33	CLUTCH CAM	DY-102893010		88X	SPOOL COMPLETE	DY-104380010
34	CLUTCH SPRING	DY-102688010		89	BALL BEARING	DY-101616010
35	KICK LEVER	DY-102307011		90	PIN	DY-104399010
36	KICK LEVER SPRING	DY-104137010		96X	PALM SIDE PLATE ASSEMBLY	DY-UA4352010
37	CAM PLATE	DY-104354010		98	CONTROL DIAL	DY-102917220
38	CAM PLATE SCREW	DY-101177050		99	SPOOL COVER	DY-104305010
39	PINION YOKE	DY-102073010		100	MAGNET HOLDER ASSEMBLY	DY-U04306010
40	PINION GEAR	DY-104368010		105	SPOOL COVER SCREW	DY-100141010
41	PINION YOKE SPRING	DY-102465010		106	SPOOL SPACER-A	DY-101850010
42	RATCHET	DY-100818010		107	BALL BEARING	DY-104541010
43	RATCHET WASHER	DY-103772010		108	BEARING RETAINER	DY-102976010
44	DRIVE GEAR	DY-102871010		116	CAM PLATE SCREW	DY-103013020
45	DRAG WASHER-L	DY-102377010		121	SLIDE CAM SPRING	DY-102665010
46	DRAG WASHER-D1	DY-100057020		122	SLIDE CAM-M	DY-103583010
47	DRAG WASHER-A	DY-100985010		123	SLIDE CAM SCREW	DY-100526020
48	DRAG WASHER-D2	DY-100986010		124	DIAL CAM-M	DY-103584010
49	SLEEVE WASHER(OPTIONAL)	DY-100144020		125	CLICK SPRING	DY-102002010
50	SLEEVE	DY-100418021		126	SPOOL COVER SPACER(OPTIONAL)	DY-102635020
51X	GEAR SIDE PLATE ASSEMBLY	DY-U04351040		127	LINK PLATE	DY-102894010
53	ONE WAY CLUTCH	DY-102090010		128	LINK PLATE SCREW	DY-103014010
54	O-RING	DY-100209020		155	BUSH	DY-104365010

SSN1SHL

Key #	Description	Order ID #		Key #	Description	Order ID #
1	FRAME	DY-104360020		55	BALL BEARING	DY-102381010
2	CLUTCH BAR PLATE-R	DY-102881010		56	BEARING RETAINER	DY-104461010
3	CLUTCH BAR PLATE-L	DY-102882010		57X	CAST CONTROL CAP ASSEMBLY	DY-U02254151
4	CLUTCH BAR ASSEMBLY	DY-102883090		58	CLICKER	DY-101674011
6	CLUTCH BAR SCREW	DY-101507030		59	CLICK PLATE	DY-101675011
7	LEVEL WIND ASSEMBLY	DY-103715010		60	CLICK PLATE RETAINER	DY-101543012
8	PIPE	DY-101406010		61	TENSION WASHER	DY-100073011
9	WORM SHAFT	DY-100017013		62	SPOOL SPACER-B	DY-100074011
10	BUSHING	DY-102605010		63	LOCKING PIN	DY-102903020
12	IDLER-S	DY-100019010		64	E-RING	DY-100621010
13	WORM SHAFT PIN	DY-100020010		65	LOCKING PIN SPRING	DY-101308010
15	WORM SHAFT BUSHING-B	DY-102438010		66	GEAR SIDE COVER SCREW-A	DY-100035020
16	WORM SHAFT WASHER	DY-100539030		67	GEAR SIDE COVER SCREW-B	DY-100028020
17	E-RING	DY-100047010		69	LUBE PORT CAP	DY-101698300
18	PILLAR	DY-104359010		70	LUBE PORT CAP SCREW	DY-101507010
19	LEVEL WIND PIN	DY-100464011		71	DRAG SPRING WASHER	DY-100088010
20	SPACER(OPTIONAL)	DY-100025020		72	CLICK PLATE ASSEMBLY	DY-U00188030
21	LEVEL WIND NUT	DY-100288021		73	STAR DRAG	DY-104356140
22	FRONT COVER	DY-104363010		77	HANDLE WASHER	DY-100933010
23	FRONT COVER SCREW	DY-103235020		78X	HANDLE COMPLETE	DY-101806340
24	BALL BEARING	DY-104542010		79	BUSHING	DY-100196010
25	CRANK SHAFT	DY-104376010		80	HANDLE KNOB	DY-103807010
26	IDLER-L WASHER-A	DY-100647050		81	BALL BEARING	DY-104543010
27	IDLER-L	DY-101938020		82	HANDLE KNOB SCREW	DY-100180010
28	IDLER-L WASHER-B	DY-100646010		83	HANDLE KNOB CAP	DY-100181050
29	BEARING PLATE	DY-104409010		85	HANDLE NUT	DY-101176230
30	E-RING	DY-100047010		86	HANDLE NUT RETAINER	DY-103642030
31	BEARING PLATE SCREW	DY-100028070		87	SCREW	DY-101202020
33	CLUTCH CAM	DY-102939010		88X	SPOOL COMPLETE	DY-104380010
34	CLUTCH SPRING	DY-102690010		89	BALL BEARING	DY-101616010
35	KICK LEVER	DY-102308011		90	PIN	DY-104399010
36	KICK LEVER SPRING	DY-104146010		96X	PALM SIDE PLATE ASSEMBLY	DY-UA4362010
37	CAM PLATE	DY-104364010		98	CONTROL DIAL	DY-102917220
38	CAM PLATE SCREW	DY-101177050		99	SPOOL COVER	DY-104305010
39	PINION YOKE	DY-102083010		100	MAGNET HOLDER ASSEMBLY	DY-U04306010
40	PINION GEAR	DY-104372010		105	SPOOL COVER SCREW	DY-100141010
41	PINION YOKE SPRING	DY-102465010		106	SPOOL SPACER-A	DY-101850010
42	RATCHET	DY-101407010		107	BALL BEARING	DY-104541010
43	RATCHET WASHER	DY-103772010		108	BEARING RETAINER	DY-102976010
44	DRIVE GEAR	DY-102965010		116	CAM PLATE SCREW	DY-103013020
45	DRAG WASHER-L	DY-102377010		121	SLIDE CAM SPRING	DY-102665010
46	DRAG WASHER-D1	DY-100057020		122	SLIDE CAM-M	DY-103583010
47	DRAG WASHER-A	DY-100985010		123	SLIDE CAM SCREW	DY-100526020
48	DRAG WASHER-D2	DY-100986010		124	DIAL CAM-M	DY-103584010
49	SLEEVE WASHER(OPTIONAL)	DY-100144020		125	CLICK SPRING	DY-102002010
50	SLEEVE	DY-100418021		126	SPOOL COVER SPACER(OPTIONAL)	DY-102635020
51X	GEAR SIDE PLATE ASSEMBLY	DY-U04361040		127	LINK PLATE	DY-102894010
53	ONE WAY CLUTCH	DY-102090010		128	LINK PLATE SCREW	DY-103014010
54	O-RING	DY-100209020		155	BUSH	DY-104365010