



TEAM LEW'S® PRO-Ti SPEED SPOOL® SLP

TLPT1SHL



Reel Specifications

Model	Weight (oz.)	Line Capacity (yd./lb.)	Braid Capacity (yd./lb.)	Gear Ratio	RPT*
TLPT1SHL	6.3	120/12	120/50	7.5:1	30"

*Recovery per turn.

FEATURES:

- Strong one-piece aluminum SLP frame and sideplates with Titanium deposition finish
- Aircraft-grade double anodized Duralumin drilled and chamfered U-shape 32mm spool
- Hard aluminum alloy Speed Gears, cut on Hamai CNC gear hobbing machine
- Premium 11-bearing system with double-shielded stainless steel ball bearings and Zero Reverse one-way clutch bearing
- Externally adjustable 6-pin, 27 position, QuietCast™ adjustable centrifugal braking system (ACB)
- Double anodized aluminum spool tension adjustment with audible click
- Rugged carbon fiber drag system provides up to 20 lbs. of drag power
- Bowed lightweight 95MM carbon fiber handle with Winn Dri-Tac knobs
- Double anodized aluminum drag star with audible click adjustment
- Titanium-coated zirconia line guide
- Exclusive patented Speed Dial line indicator and patented Speed Keeper® hook keeper

ATTENTION BRAIDED LINE USERS!

If your Lew's® Baitcast reel has pre-drilled holes in the spool, you may tie your braid directly to the spool, by passing the braid thru the provided holes and tying a uni-knot.

If your Lew's baitcast reel does not have pre-drilled holes in the spool, you will need to first tie on and spool at least 20 revolutions of monofilament line, and then tie your braided line to the monofilament line, with either a back-to-back uni-knot or an Albright knot.

Continue to spool your reel as normal, keeping strong tension on the line to ensure the line is firmly wound onto the spool to keep from "digging in" to underlying line layers when pressure is put on the line from fighting fish.

FAILURE TO PROPERLY SPOOL BRAIDED LINE ONTO YOUR REELS SPOOL WILL RESULT IN LINE SLIPPAGE, AND THE IMPRESSION YOUR DRAG IS NOT WORKING PROPERLY.

Performance — Right out of the Box!

Your Speed Spool® SLP reel is designed for performance and functionality. From the way it conforms to your hand, to the way it reacts crisply and effortlessly to your command, you'll know the minute you grab onto your Speed Spool® SLP that you've got a quality reel.

Your Speed Spool SLP reel exploits several new developments which will allow you to set yourself apart from the competition.

One-piece Aluminum Frame and Sideplates

Your Speed Spool reel utilizes a one-piece all aluminum frame and sideplates with Titanium Deposition finish, making the Team Lew's Pro Titanium the strongest Lew's reel ever built.

Speed Gears

Hard aluminum alloy Speed Gears are cut on the finest Hamai CNC gear hobbing machines resulting in precise gear interface for smooth cranking power.

Zero Reverse Bearing

The handle on your Speed Spool reel will only rotate forward for rock solid hook setting. When you release the handle, it will hold its position because of the Zero Reverse® bearing, never losing an inch on your catch; an invaluable property to have when you're pulling it in.

Externally 6-Pin QuietCast Adjustable Centrifugal Brake System (ACB)

The SpeedCast® Quite Cast Adjustable Centrifugal Brake System delivers an extreme range of braking power from free spool to maximum by simply clicking its external dial to choose among 27 variable settings. The ACB system puts you in control of your casts, perfectly aligning brake power to conditions. With this system you will have quiet and smooth casting control over light lures, while maximizing casting distance with all lures.

Cast Control System

A second feature exists to prevent backlash, the Cast Control System. The adjustment knob is found next to the star drag. This function saddles the spool shaft with steady pressure in order to stabilize spool speed.

To calibrate the system reel your lure in until it rests on the tip of the rod, then tighten the knob until taut. Depress the thumb bar, and holding the rod horizontally loosen the knob slowly until the lure begins to descend. The spool should continue to spin after the lure contacts the ground, but should not complete more than one full rotation. If the spool does not continue to spin, the knob is too tight.

If the spool completes more than one rotation, the knob is too loose. Repeat until you have achieved the desired results.

Bowed 95mm Carbon Handle

The 95mm bowed handle will give you all the cranking power you need. The comfortable Winn Dri-Tac knobs provide a sure grip for all day fishing performance.

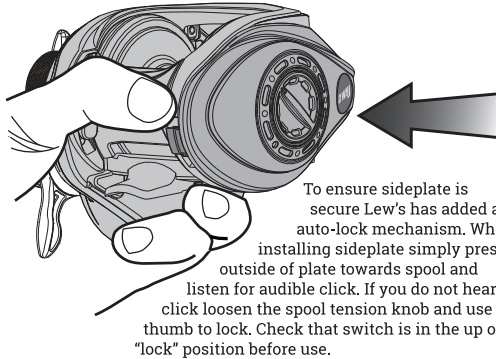


When applying lubricant to your Speed Spool® reel, avoid using multi-purpose oil. Use lightweight oils or greases made for fishing reels. Apply oil to all bearings, the crankshaft and the worm gear. Apply grease to the bushings, pinion gears, drive gears, and crank gears.

Fig. 1 To remove palming sideplate slide down level and pull slideplate off.



To ensure sideplate is secure Lew's has added a auto-lock mechanism. When installing sideplate simply press outside of plate towards spool and listen for audible click. If you do not hear click loosen the spool tension knob and use thumb to lock. Check that switch is in the up or "lock" position before use.



B-17-1

TLPT1SHL

Key #	Description	Order ID #		Key #	Description	Order ID #
1	FRAME	DY-103549050		67	GEAR SIDE COVER SCREW-B	DY-100035080
2	CLUTCH BAR PLATE-R	DY-102881010		68	GEAR SIDE COVER SCREW-C	DY-100028060
3	CLUTCH BAR PLATE-L	DY-102882010		69	LUBE PORT CAP	DY-101698020
4	CLUTCH BAR ASSEMBLY	DY-102883100		70	LUBE PORT CAP SCREW	DY-101507040
6	CLUTCH BAR SCREW	DY-101507040		71	DRAG SPRING WASHER	DY-100088010
7	LEVEL WIND ASSEMBLY	DY-103522020		72	CLICK HOLDER	DY-101765010
8	PIPE	DY-103286010		73X	STAR DRAG COMPLETE	DY-U02947432
9	WORM SHAFT	DY-103287010		74	CLICK LEAF SPRING	DY-101763010
10	BALL BEARING	DY-102954010		75	CLICK PLATE-B	DY-101764010
11	WORM SHAFT BUSHING-A	DY-102438010		76	CLICK PLATE RETAINER	DY-101766011
12	IDLER-S	DY-100019010		77	HANDLE WASHER	DY-100933010
13	WORM SHAFT PIN	DY-100020010		78X	HANDLE COMPLETE	DY-104104020
14	BALL BEARING	DY-102954010		79	BALL BEARING	DY-102950010
16	WORM SHAFT WASHER	DY-100539010		80	HANDLE KNOB	DY-103630070
17	E-RING	DY-100047010		81	BALL BEARING	DY-102950010
18	PILLAR	DY-102711020		82	HANDLE KNOB SCREW	DY-100180010
19	LEVEL WIND PIN	DY-100464011		83	HANDLE KNOB CAP	DY-102309081
20	SPACER(OPTIONAL)	DY-100025010		84	HANDLE WASHER	DY-100933010
21	LEVEL WIND NUT	DY-100288021		85	HANDLE NUT	DY-101176240
22	FRONT COVER	DY-103841010		86	HANDLE NUT RETAINER	DY-103642100
23	FRONT COVER SCREW	DY-100152010		87	SCREW	DY-101202020
24	BALL BEARING	DY-102952010		88X	SPOOL COMPLETE	DY-104181030
25	CRANK SHAFT	DY-103654010		89	BALL BEARING	DY-100156010
26	IDLER-L WASHER-A	DY-100548010		90	PIN	DY-100120010
27	IDLER-L	DY-101938020		91	BRAKE HOLDER	DY-103670010
28	IDLER-L WASHER-B	DY-100045020		92	BRAKE SHOE ASSEMBLY	DY-103272010
29	BEARING PLATE	DY-102944020		94	BRAKE HOLDER PLATE	DY-103671010
30	E-RING	DY-100047010		95	MAGNET PLATE SCREW	DY-100526010
31	BEARING PLATE SCREW	DY-100028070		96X	PALM SIDE PLATE ASSEMBLY	DY-U03845030
33	CLUTCH CAM	DY-103551010		98	CONTROL DIAL	DY-102917170
34	CLUTCH SPRING	DY-102690010		99	SPOOL COVER	DY-103537010
35	KICK LEVER	DY-102308011		105	SPOOL COVER SCREW	DY-101337010
36	KICK LEVER SPRING	DY-102058010		106	SPOOL SPACER-A	DY-101850010
37	CAM PLATE	DY-103552010		107	BALL BEARING	DY-100155010
38	CAM PLATE SCREW	DY-101177050		108	BEARING RETAINER	DY-102976010
39	PINION YOKE	DY-102165010		114	WASHER(OPTIONAL)	DY-100073011
40	PINION GEAR	DY-102958010		117	CLUTCH WASHER	DY-100539030
41	PINION YOKE SPRING	DY-102465010		118	CLUTCH SCREW	DY-103013020
42	RATCHET	DY-100818020		120	BRAKE PLATE HOLDER ASSEMBLY	DY-103559010
43	RATCHET WASHER	DY-103772010		121	SLIDE CAM SPRING	DY-102665010
44	DRIVE GEAR	DY-102965020		122	SLIDE CAM-H	DY-103342010
45	DRAG WASHER-L	DY-102377010		123	SLIDE CAM SCREW	DY-100526020
46	DRAG WASHER-D1	DY-100057020		124	SLIDE CAM-D	DY-102394010
47	DRAG WASHER-A	DY-100985010		125	CLICK SPRING	DY-102002010
48	DRAG WASHER-D2	DY-102134011		127	LINK PLATE	DY-102894010
49	SLEEVE WASHER(OPTIONAL)	DY-100144050		128	LINK PLATE SCREW	DY-103014010
50	SLEEVE	DY-101983010		133	HOOK HOLDER	DY-102943020
51X	GEAR SIDE PLATE ASSEMBLY	DY-U03843030		134	HOOK HOLDER WASHER	DY-101168020
53	ONE WAY CLUTCH	DY-101515010		135	HOOK HOLDER SCREW	DY-100246030
54	O-RING	DY-100209020		136	HOOK HOLDER SPRING	DY-102969010
55	BALL BEARING	DY-102971010		141	HOOD	DY-103848040
56	BEARING RETAINER	DY-101588011		142	HOOD SCREW	DY-101177060
57X	CAST CONTROL CAP ASSEMBLY	DY-U03164150		143	FRONT COVER SCREW-B	DY-101177060
58	CLICKER	DY-101674011		144	LOCK LEVER	DY-103557011
59	CLICK PLATE	DY-101675011		147	GUIDE PIN	DY-103288010
60	CLICK PLATE RETAINER	DY-101543012		148	WASHER(OPTIONAL)	DY-103567010
61	TENSION WASHER	DY-100073011		149	SLIDE PLATE	DY-104101010
62	SPOOL SPACER-B	DY-100074021		150	SLIDE PLATE SCREW	DY-101177060
66	GEAR SIDE COVER SCREW-A	DY-101177020		151	LOCK LEVER SPRING	DY-104101010