



SmartPlus™  
**6-PIN CBS**  
centrifugal brake system

Speed Spool Bait Cast reels are designed to be **Lighter, Faster and Stronger**

Driven by innovation – Fueled with Passion  
**Feel the Difference!**

**BBI SPEED SPOOL**®

**Reel Specifications**

Model	Weight	Gear Ratio	Line Capacity	IPT
BB1	7.1 OZ.	5.1:1	160/12 LB.	21"
BB1L	7.1 OZ.	5.1:1	160/12 LB.	21"
BB1HZ	7.2 OZ.	6.4:1	160/12 LB.	28"
BB1HZL	7.2 OZ.	6.4:1	160/12 LB.	28"
BB1SHZL	7.2 OZ.	7.1:1	160/12 LB.	31"
BB1SHZ	7.2 OZ.	7.1:1	160/12 LB.	31"

**FEATURES:**

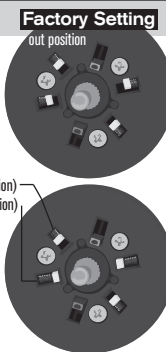
- One-piece die cast aluminum frame
- Carbon composite drag system
- Smart Plus 6-Pin Centrifugal Braking System
- Audible click, bowed aluminum metal star drag
- 10 bearing system
- Machined forged aluminum spool
- Extended bowed aluminum handle

**Factory Setting and Guidelines**

The SmartPlus™ 6-Pin Centrifugal Brake System in your new BB1 Series reel was pre-set at the factory with 4 SmartPlus™ pins on. This is the recommended setting for casting lighter baits weighing 1/2 oz. or less. For optimum control and distance when casting baits heavier than 1/2 oz., we suggest changing the setting to 2 SmartPlus™ pins on (out position) and 2 off (in position). The two blue Speed Pins can also be activated when additional braking force is needed to prevent backlash.

Changing brake settings is easy and is detailed in the Maintenance and Care section of your Owner's Manual (see fig 1.). Refer to the chart below for factory recommended SmartPlus™ pin settings for the more popular bait weights;

Bait Weight	3/16 oz.	¼ oz.	3/8 oz.	½ oz.	5/8 oz.	¾ oz.	1 oz.
Smart Plus Pin Setting	4 Pins On	4 Pins On	4 Pins On	4 Pins On	2 Pins On	2 Pins On	2 Pins On



**Designed Performance**

Our new bait-cast reel by Lew's® is designed for performance and functionality. From the way it conforms to your hand, to the way it reacts crisply and effortlessly to your command, you'll know the minute you grab onto the Speed Spool® that you've got a quality reel.

Your Speed Spool® reel exploits several new developments which will allow you to set yourself apart from the competition.

**One-piece Die Cast Aluminum Frame**

Your Speed Spool® reel utilizes a one-piece all aluminum frame. So you'll never have to worry about frame twisting or torquing.

**Lightweight Machined Aluminum Spool**

Machined Aluminum Spool

The spool on your Lew's® reel has been engineered to maximize casting distance. Double anodized to withstand oxidation and abrasion, this lightweight machined forged U shaped large capacity aluminum spool will allow you to propel your lure farther than the competition - and you'll have a greater degree of control with less standing between you and the fish.

**Muti-Stop Anti-Reverse**

**10 Bearings System**

The BB1 and BB1L features double shielded ball bearings and 24-point Multi-Stop Anti-Reverse. Multi-stop anti-reverse will disperse the point of impact from hard hook setting thus protecting and extending the life of the gears. The Multi-Stop Anti-Reverse allows greater sensitivity to be transferred through the reel into your hand.

**Zero Anti-Reverse Bearing**

The BB1HZ, BB1SHZ, BB1HZL, and BB1SHZL features double shielded ball bearings and Zero Anti-Reverse. The Zero Anti-Reverse system stops the reel handle from spinning backward when in gear.

**SmartPlus™ 6-Pin Centrifugal Brake System**

SmartPlus™  
**6-PIN CBS**  
centrifugal brake system

Your new BB1 Speed Spool® incorporates the latest reel technologies with the Lew's® SmartPlus™ 6-Pin Centrifugal Braking System for unmatched casting distance and backlash control. This system features four spring-loaded SmartPlus pins (white) and two Speed pins (blue), each capable of being turned "on" (out position) or "off" (in position) according to angler needs and fishing conditions. Our spring-loaded SmartPlus pins automatically back off the applied brake resistance as the cast slows, offering ideal control for most typical fishing situations. For more braking power, such as when casting light lures or into the wind, the Speed pins can be engaged throughout the entire cast. Use your fingernail to adjust each brake, listening for the "click" as it goes into our PosiLock™ setting of on or off. The Lew's® Speed Spool Quick Release side plate mechanism allows easy access to the SmartPlus™ Centrifugal Braking System.

**Bowed 95mm Aluminum Cranking Handle**

Our 95mm bowed aluminum cranking handle will give you all the cranking power you need. The Lew's custom Soft Touch contoured paddle is an added bonus known for it's comfortable fit and ease for all day fishing.



One Year Limited Warranty

Lew's® warrants its products<sup>1</sup> to withstand normal<sup>2</sup> use for the purpose designed and intended when manufactured for a period of one (1) year from the original retail sale date to the original retail consumer. Lew's® will at its option repair or replace<sup>3</sup> Lew's® products when required for the warranty period and return<sup>4</sup> the product to the owner at no additional<sup>5</sup> cost to the owner.

<sup>1</sup>Numerous products have been manufactured under variations of the Lew's® name and under the Lew's® Logo by multiple businesses over the past 50 years. This warranty is specifically for products manufactured on behalf of Lew's® of Springfield, Missouri USA since January 1, 2010. Lew's® products manufactured by or on behalf of other entities prior to January 1, 2010 are not covered by this warranty. In all circumstances, this Warranty is Limited in Value to the original retail value of the product and is limited to actual damage to the Lew's® product and only the Lew's® product. <sup>2</sup>Loss of a product, and loss/damage of a product or parts due to the attempted repair or servicing of a Lew's® product by any person or business other than Lew's® or Lew's® Authorized Warranty Service Agent, and damage caused by or resulting from abuse, misuse, lack of recommended maintenance, accident, acts of God, and shipping damages occurring in transit to Lew's® or Lew's® Authorized Agent are outside the scope of Lew's® Limited Warranty and will be repaired through Lew's® after warranty services at the expense of the consumer. <sup>3</sup>Any products replaced by Lew's® will be new or remanufactured by a Lew's® Authorized Agent with the same or next model upgrade product. <sup>4</sup>Lew's® will return warranted products to the consumer by reasonable means as determined by Lew's®. <sup>5</sup>Express or expedited services are the responsibility of the consumer as is sending the product to Lew's® or Lew's® Authorized Agent, for Warranty Service. Lew's® and Lew's® Service Agents as authorized by Lew's® are the sole agents authorized to repair or replace Lew's® products under the terms of this warranty. Only written changes by an officer of Lew's® can alter the terms or conditions of this warranty.

This warranty gives you specific legal rights including additional rights extended by some states which do not allow certain exclusions and limitations. Any action brought against Lew's® for the purpose of settling a warranty dispute shall be brought and litigated in the State of Missouri, County of Greene.

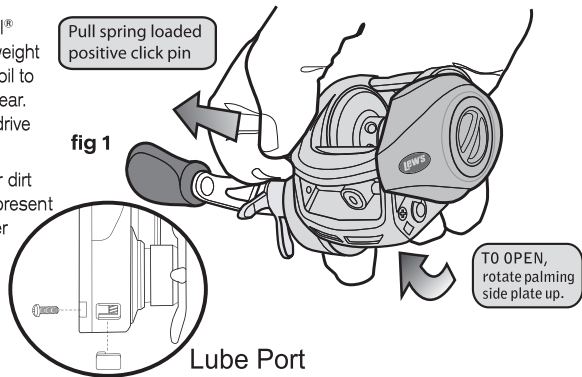
Maintenance and Care

To remove the palming side plate, rotate palming side plate up while pulling the plunger located on the gear side-plate out.

When applying lubricant to your Speed Spool® reel, avoid using multi-purpose oil. Use lightweight oils or greases made for fishing reels. Apply oil to all bearings, the crank shaft, and the worm gear. Apply grease to the bushings, pinion gears, drive gears, and crank gears.

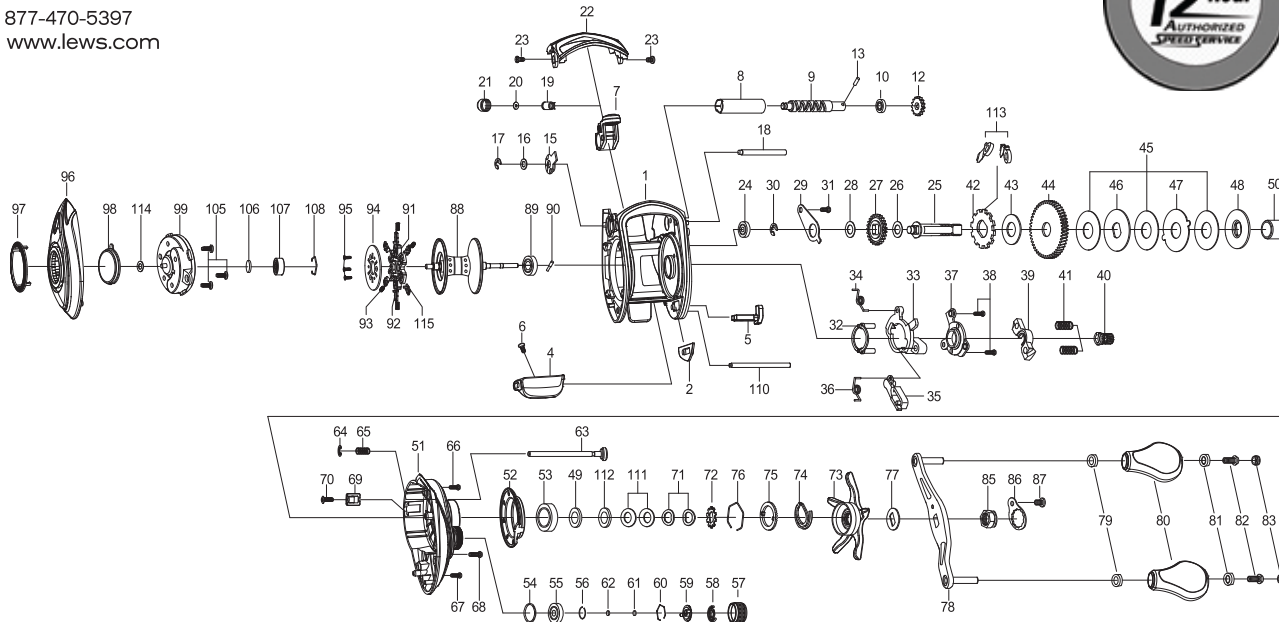
After usage your reel should be inspected for dirt or sand and cleaned if excessive buildup is present. If your reel has come in contact with saltwater it is important to flush all parts with water, dry and re-lubricate your reel. Through diligent cleaning and maintenance your Lew's® reel will

fig 1 To remove side cover pull side-plate click pin pry front cover away from body to access components



For professional cleaning and maintenance send your reel postage prepaid to:

LEW'S® 3031 N. Martin  
Springfield, MO 65803  
877-470-5397  
www.lews.com



Key #	Part Name	Key #	Part Name	Key #	Part Name
1	FRAME	39	PINION YOKE	74	CLICKER
2	CLUTCH BAR PLATE	40	PINION GEAR	75	CLICK PLATE
4	CLUTCH BAR	41	PINION YOKE SPRING(*2)	76	CLICK PLATE RETAINER
5	CLUTCH LINK	42	RATCHET	77	HANDLE WASHER
6	CLUTCH BAR SCREW	43	RATCHET WASHER	78	HANDLE ASSEMBLY
7	LEVEL WIND ASSEMBLY	44	DRIVE GEAR	79	BALL BEARING (*2)
8	PIPE	45	DRAG WASHER (L*3)	80	HANDLE KNOB (*2)
9	WORM SHAFT	46	DRAG WASHER (D1)	81	BALL BEARING (*2)
10	BALL BEARING	47	DRAG WASHER (A)	82	HANDLE KNOB SCREW (*2)
12	IDLER(S)	48	DRAG WASHER (D2)	83	HANDLE KNOB CAP (*2)
13	WORM SHAFT PIN	49	SLEEVE WASHER(OPTIONAL)	85	HANDLE NUT
15	WORM SHAFT BUSHING (B)	50	BUSH	86	HANDLE NUT RETAINER
16	WORM SHAFT WASHER(OPTIONAL)	51	RIGHT SIDE COVER ASSEMBLY	87	HANDLE NUT RETAINER SCREW
17	E-RING	52	RIGHT SIDE COVER TRIM	88	SPOOL ASSEMBLY
18	PILLAR (B)	53	BALL BEARING	89	BALL BEARING
19	LEVEL WIND PIN	54	O-RING	90	PIN
20	SPACER(OPTIONAL)	55	BALL BEARING	91	BRAKE HOLDER
21	LEVEL WIND NUT	56	C-RING	92	BRAKE SHOE - A (*4)
22	FRONT COVER	57	CAST CONTROL CAP	93	BRAKE SHOE SPRING (*4)
23	FRONT COVER SCREW (*2)	58	CLICKER	94	BRAKE HOLDER PLATE
24	BALL BEARING	59	CLICK PLATE	95	BRAKE HOLDER PLATE SCREW(*2)
25	CRANK SHAFT	60	CLICK PLATE RETAINER	96	PALM SIDE COVER ASSEMBLY
26	IDLER(L) WASHER (A)	61	TENSION WASHER	97	PALM SIDE COVER TRIM
27	IDLER(L)	62	SPOOL SPACER (B)	98	DECORATOR
28	IDLER(L) WASHER (B)	63	LOCKING PIN	99	SPOOL COVER ASSEMBLY
29	BEARING PLATE	64	E-RING	105	SPOOL COVER SCREW (*3)
30	E-RING	65	LOCKING PIN SPRING	106	SPOOL SPACER
31	BEARING PLATE SCREW	66	GEAR SIDE COVER SCREW (A)	107	BALL BEARING
32	YOKE HOLDER	67	GEAR SIDE COVER SCREW (B)	108	BEARING RETAINER
33	CLUTCH CAM	68	GEAR SIDE COVER SCREW (C)	110	PILLAR - A
34	CLUTCH SPRING	69	LUBE PORT CAP	111	DRAG SPRING WASHER (B*2)
35	KICK LEVER	70	LUBE PORT CAP SCREW	112	DRAG SPACER
36	KICK LEVER SPRING	71	DRAG SPRING WASHER (A*2)	113	STOPPER ASSEMBLY (*2)
37	CAM PLATE	72	CLICK HOLDER	114	DECORATOR WASHER(OPTIONAL)
38	CAM PLATE SCREW(*2)	73	STAR DRAG ASSEMBLY	115	BRAKE SHOE - B (*2)

BB1

Key #	Description	Order ID #		Key #	Description	Order ID #
1	FRAME	DY-102320010		57X	CAST CONTROL CAP ASSEMBLY	DY-U02254010
2	CLUTCH BAR PLATE-R/L	DY-102327010		58	CLICKER	DY-101674011
4	CLUTCH BAR	DY-102326010		59	CLICK PLATE	DY-101675011
5	CLUTCH LINK	DY-102328010		60	CLICK PLATE RETAINER	DY-101543012
6	CLUTCH BAR SCREW	DY-100335020		61	TENSION WASHER	DY-100073011
7	LEVEL WIND ASSEMBLY	DY-102329010		62	SPOOL SPACER-B	DY-100074011
8	PIPE	DY-102112010		63	LOCKING PIN	DY-101306040
9	WORM SHAFT	DY-103462010		64	E-RING	DY-100621010
10	BALL BEARING	DY-104544010		65	LOCKING PIN SPRING	DY-101308010
12	IDLER-S	DY-100019010		66	GEAR SIDE COVER SCREW-A	DY-100035060
13	WORM SHAFT PIN	DY-100020010		67	GEAR SIDE COVER SCREW-B	DY-100035070
15	WORM SHAFT BUSHING-B	DY-100145011		68	GEAR SIDE COVER SCREW-C	DY-102341020
16	WORM SHAFT WASHER	DY-100539020		69	LUBE PORT CAP	DY-101698020
17	E-RING	DY-100047010		70	LUBE PORT CAP SCREW	DY-100202060
18	PILLAR-B	DY-102343010		71	DRAG SPRING WASHER	DY-100088010
19	LEVEL WIND PIN	DY-100464011		72	CLICK HOLDER	DY-101765010
20	SPACER(OPTIONAL)	DY-100025010		73X	STAR DRAG COMPLETE	DY-U02338013
21	LEVEL WIND NUT	DY-100288021		74	CLICKER	DY-101763010
22	FRONT COVER	DY-102323010		75	CLICK PLATE	DY-101764010
23	FRONT COVER SCREW	DY-100152010		76	CLICK PLATE RETAINER	DY-101766011
24	BALL BEARING	DY-104542010		77	HANDLE WASHER	DY-100933010
25	CRANK SHAFT	DY-102347010		78X	HANDLE COMPLETE	DY-101806040
26	IDLER-L WASHER-A	DY-100548010		79	BALL BEARING	DY-104543010
27	IDLER-L	DY-101938020		80	HANDLE KNOB	DY-101812020
28	IDLER-L WASHER-B	DY-100045020		81	BALL BEARING	DY-104543010
29	BEARING PLATE	DY-100817011		82	HANDLE KNOB SCREW	DY-100180010
30	E-RING	DY-100047010		83	HANDLE KNOB CAP	DY-100181050
31	BEARING PLATE SCREW	DY-100112040		85	HANDLE NUT	DY-100319100
32	YOKE HOLDER	DY-100029010		86	HANDLE NUT RETAINER	DY-101798010
33	CLUTCH CAM	DY-100666012		87	SCREW	DY-101202020
34	CLUTCH SPRING	DY-101336011		88X	SPOOL COMPLETE	DY-102339010
35	KICK LEVER	DY-102307011		89	BALL BEARING	DY-100156010
36	KICK LEVER SPRING	DY-102048010		90	PIN	DY-100120010
37	CAM PLATE	DY-101364010		91	BRAKE HOLDER	DY-100996030
38	CAM PLATE SCREW	DY-100697020		92	BRAKE SHOE	DY-100522010
39	PINION YOKE	DY-102073010		92	BRAKE SHOE-A	DY-100522030
40	PINION GEAR	DY-101567012		93	BRAKE SHOE SPRING	DY-100525010
41	PINION YOKE SPRING	DY-100059020		94	BRAKE HOLDER PLATE	DY-101152010
42	RATCHET	DY-100344010		95	BRAKE HOLDER PLATE SCREW	DY-100526010
43	RATCHET WASHER	DY-102247050		96X	PALM SIDE PLATE ASSEMBLY	DY-UA2322010
44	DRIVE GEAR	DY-101565010		98	DECORATOR	DY-102065020
45	DRAG WASHER-L	DY-102377010		99	SPOOL COVER ASSEMBLY	DY-U01304011
46	DRAG WASHER-D1	DY-100057020		105	SPOOL COVER SCREW	DY-100141010
47	DRAG WASHER-A	DY-100985010		106	SPOOL SPACER-A	DY-101850010
48	DRAG WASHER-D2	DY-100986011		107	BALL BEARING	DY-100155010
50	BUSHING	DY-102404010		108	BEARING RETAINER	DY-102976010
51X	GEAR SIDE PLATE ASSEMBLY	DY-U02321010		110	PIILLAR-A	DY-102332010
53	BALL BEARING	DY-102359010		111	DRAG SPRING WASHER	DY-101205010
54	O-RING	DY-100209020		112	DRAG SPACER	DY-100087010
55	BALL BEARING	DY-104541010		113	STOPPER ASSEMBLY	DY-102345010
56	BEARING RETAINER	DY-101588011		114	WASHER(OPTIONAL)	DY-101168010

BB1L

Key #	Description	Order ID #		Key #	Description	Order ID #
1	FRAME	DY-102350010		57X	CAST CONTROL CAP ASSEMBLY	DY-U02254010
2	CLUTCH BAR PLATE-R/L	DY-102354010		58	CLICKER	DY-101674011
4	CLUTCH BAR	DY-102353010		59	CLICK PLATE	DY-101675011
5	CLUTCH LINK	DY-102355010		60	CLICK PLATE RETAINER	DY-101543012
6	CLUTCH BAR SCREW	DY-100335020		61	TENSION WASHER	DY-100073011
7	LEVEL WIND ASSEMBLY	DY-102329010		62	SPOOL SPACER-B	DY-100074011
8	PIPE	DY-102112010		63	LOCKING PIN	DY-101306040
9	WORM SHAFT	DY-103462010		64	E-RING	DY-100621010
10	BALL BEARING	DY-104544010		65	LOCKING PIN SPRING	DY-101308010
12	IDLER-S	DY-100019010		66	GEAR SIDE COVER SCREW-A	DY-100035060
13	WORM SHAFT PIN	DY-100020010		67	GEAR SIDE COVER SCREW-B	DY-100035070
15	WORM SHAFT BUSHING-B	DY-100145011		68	GEAR SIDE COVER SCREW-C	DY-102341020
16	WORM SHAFT WASHER	DY-100539020		69	LUBE PORT CAP	DY-101698020
17	E-RING	DY-100047010		70	LUBE PORT CAP SCREW	DY-100202060
18	PILLAR-B	DY-102343010		71	DRAG SPRING WASHER	DY-100088010
19	LEVEL WIND PIN	DY-100464011		72	CLICK HOLDER	DY-101765010
20	SPACER(OPTIONAL)	DY-100025010		73X	STAR DRAG COMPLETE	DY-U02357013
21	LEVEL WIND NUT	DY-100288021		74	CLICKER	DY-101763010
22	FRONT COVER	DY-102323010		75	CLICK PLATE	DY-101764010
23	FRONT COVER SCREW	DY-100152010		76	CLICK PLATE RETAINER	DY-101766011
24	BALL BEARING	DY-104542010		77	HANDLE WASHER	DY-100933010
25	CRANK SHAFT	DY-102349010		78X	HANDLE COMPLETE	DY-101806040
26	IDLER-L WASHER-A	DY-100548010		79	BALL BEARING	DY-104543010
27	IDLER-L	DY-101938020		80	HANDLE KNOB	DY-101812020
28	IDLER-L WASHER-B	DY-100045020		81	BALL BEARING	DY-104543010
29	BEARING PLATE	DY-100817011		82	HANDLE KNOB SCREW	DY-100180010
30	E-RING	DY-100047010		83	HANDLE KNOB CAP	DY-100181050
31	BEARING PLATE SCREW	DY-100112040		85	HANDLE NUT	DY-101176100
32	YOKE HOLDER	DY-100029010		86	HANDLE NUT RETAINER	DY-101798010
33	CLUTCH CAM	DY-100908012		87	SCREW	DY-101202020
34	CLUTCH SPRING	DY-101405010		88X	SPOOL COMPLETE	DY-102339010
35	KICK LEVER	DY-102308011		89	BALL BEARING	DY-100156010
36	KICK LEVER SPRING	DY-102058010		90	PIN	DY-100120010
37	CAM PLATE	DY-101218010		91	BRAKE HOLDER	DY-100996030
38	CAM PLATE SCREW	DY-100697020		92	BRAKE SHOE	DY-100522010
39	PINION YOKE	DY-102083010		92	BRAKE SHOE-A	DY-100522030
40	PINION GEAR	DY-101570012		93	BRAKE SHOE SPRING	DY-100525010
41	PINION YOKE SPRING	DY-100059020		94	BRAKE HOLDER PLATE	DY-101152010
42	RATCHET	DY-100344010		95	BRAKE HOLDER PLATE SCREW	DY-100526010
43	RATCHET WASHER	DY-102247050		96X	PALM SIDE PLATE ASSEMBLY	DY-UA2352010
44	DRIVE GEAR	DY-101568010		98	DECORATOR	DY-102065020
45	DRAG WASHER-L	DY-102377010		99	SPOOL COVER ASSEMBLY	DY-U01304011
46	DRAG WASHER-D1	DY-100057020		105	SPOOL COVER SCREW	DY-100141010
47	DRAG WASHER-A	DY-100985010		106	SPOOL SPACER-A	DY-101850010
48	DRAG WASHER-D2	DY-100986011		107	BALL BEARING	DY-100155010
50	BUSHING	DY-102404010		108	BEARING RETAINER	DY-102976010
51X	GEAR SIDE PLATE ASSEMBLY	DY-U02351010		110	PIILLAR-A	DY-102332010
53	BALL BEARING	DY-102359010		111	DRAG SPRING WASHER	DY-101205010
54	O-RING	DY-100209020		112	DRAG SPACER	DY-100087010
55	BALL BEARING	DY-104541010		113	STOPPER ASSEMBLY	DY-102345010
56	BEARING RETAINER	DY-101588011		114	WASHER(OPTIONAL)	DY-101168010

BB1HZ

Key #	Description	Order ID #		Key #	Description	Order ID #
1	FRAME	DY-102320010		57X	CAST CONTROL CAP ASSEMBLY	DY-U02254010
2	CLUTCH BAR PLATE-R/L	DY-102327010		58	CLICKER	DY-101674011
4	CLUTCH BAR	DY-102326010		59	CLICK PLATE	DY-101675011
5	CLUTCH LINK	DY-102328010		60	CLICK PLATE RETAINER	DY-101543012
6	CLUTCH BAR SCREW	DY-100335020		61	TENSION WASHER	DY-100073011
7	LEVEL WIND ASSEMBLY	DY-102329010		62	SPOOL SPACER-B	DY-100074011
8	PIPE	DY-102112010		63	LOCKING PIN	DY-101306040
9	WORM SHAFT	DY-103462010		64	E-RING	DY-1006221010
10	BALL BEARING	DY-104544010		65	LOCKING PIN SPRING	DY-101308010
12	IDLER-S	DY-100019010		66	GEAR SIDE COVER SCREW-A	DY-100035060
13	WORM SHAFT PIN	DY-100020010		67	GEAR SIDE COVER SCREW-B	DY-100035070
15	WORM SHAFT BUSHING-B	DY-100145011		68	GEAR SIDE COVER SCREW-C	DY-102341020
16	WORM SHAFT WASHER	DY-100539020		69	LUBE PORT CAP	DY-101698020
17	E-RING	DY-100047010		70	LUBE PORT CAP SCREW	DY-100202060
18	PILLAR-B	DY-102343010		71	DRAG SPRING WASHER	DY-100088010
19	LEVEL WIND PIN	DY-100464011		72	CLICK HOLDER	DY-101765010
20	SPACER(OPTIONAL)	DY-100025010		73X	STAR DRAG COMPLETE	DY-U02338023
21	LEVEL WIND NUT	DY-100288021		74	CLICKER	DY-101763010
22	FRONT COVER	DY-102323010		75	CLICK PLATE	DY-101764010
23	FRONT COVER SCREW	DY-100152010		76	CLICK PLATE RETAINER	DY-101766011
24	BALL BEARING	DY-104542010		77	HANDLE WASHER	DY-100933010
25	CRANK SHAFT	DY-101322020		78X	HANDLE COMPLETE	DY-101806040
26	IDLER-L WASHER-A	DY-100548010		79	BALL BEARING	DY-104543010
27	IDLER-L	DY-101938020		80	HANDLE KNOB	DY-101812020
28	IDLER-L WASHER-B	DY-100045020		81	BALL BEARING	DY-104543010
29	BEARING PLATE	DY-100817011		82	HANDLE KNOB SCREW	DY-100180010
30	E-RING	DY-100047010		83	HANDLE KNOB CAP	DY-100181050
31	BEARING PLATE SCREW	DY-100112040		85	HANDLE NUT	DY-100319100
32	YOKE HOLDER	DY-100029010		86	HANDLE NUT RETAINER	DY-101798010
33	CLUTCH CAM	DY-100666012		87	SCREW	DY-101202020
34	CLUTCH SPRING	DY-101336011		88X	SPOOL COMPLETE	DY-102339010
35	KICK LEVER	DY-102307011		89	BALL BEARING	DY-100156010
36	KICK LEVER SPRING	DY-102048010		90	PIN	DY-100120010
37	CAM PLATE	DY-101364010		91	BRAKE HOLDER	DY-100996030
38	CAM PLATE SCREW	DY-100697020		92	BRAKE SHOE	DY-100522010
39	PINION YOKE	DY-102073010		92	BRAKE SHOE-A	DY-100522030
40	PINION GEAR	DY-100982013		93	BRAKE SHOE SPRING	DY-100525010
41	PINION YOKE SPRING	DY-100059020		94	BRAKE HOLDER PLATE	DY-101152010
42	RATCHET	DY-100344010		95	BRAKE HOLDER PLATE SCREW	DY-100526010
43	RATCHET WASHER	DY-102247050		96X	PALM SIDE PLATE ASSEMBLY	DY-UA2322010
44	DRIVE GEAR	DY-100974010		98	DECORATOR	DY-102065020
45	DRAG WASHER-L	DY-102377010		99	SPOOL COVER ASSEMBLY	DY-U01304011
46	DRAG WASHER-D1	DY-100057020		105	SPOOL COVER SCREW	DY-100141010
47	DRAG WASHER-A	DY-100985010		106	SPOOL SPACER-A	DY-101850010
48	DRAG WASHER-D2	DY-100986011		107	BALL BEARING	DY-100155010
50	SLEEVE	DY-100418011		108	BEARING RETAINER	DY-102976010
51X	GEAR SIDE PLATE ASSEMBLY	DY-U02321020		110	PIILLAR-A	DY-102332010
53	ONE WAY CLUTCH	DY-102090010		111	DRAG SPRING WASHER	DY-101205010
54	O-RING	DY-100209020		112	DRAG SPACER	DY-100087010
55	BALL BEARING	DY-104541010		113	STOPPER ASSEMBLY	DY-102345010
56	BEARING RETAINER	DY-101588011		114	WASHER(OPTIONAL)	DY-101168010

BB1HZL

Key #	Description	Order ID #		Key #	Description	Order ID #
1	FRAME	DY-102350010		57X	CAST CONTROL CAP ASSEMBLY	DY-U02254010
2	CLUTCH BAR PLATE-R/L	DY-102354010		58	CLICKER	DY-101674011
4	CLUTCH BAR	DY-102353010		59	CLICK PLATE	DY-101675011
5	CLUTCH LINK	DY-102355010		60	CLICK PLATE RETAINER	DY-101543012
6	CLUTCH BAR SCREW	DY-100335020		61	TENSION WASHER	DY-100073011
7	LEVEL WIND ASSEMBLY	DY-102329010		62	SPOOL SPACER-B	DY-100074011
8	PIPE	DY-102112010		63	LOCKING PIN	DY-101306040
9	WORM SHAFT	DY-103462010		64	E-RING	DY-100621010
10	BALL BEARING	DY-104544010		65	LOCKING PIN SPRING	DY-101308010
12	IDLER-S	DY-100019010		66	GEAR SIDE COVER SCREW-A	DY-100035060
13	WORM SHAFT PIN	DY-100020010		67	GEAR SIDE COVER SCREW-B	DY-100035070
15	WORM SHAFT BUSHING-B	DY-100145011		68	GEAR SIDE COVER SCREW-C	DY-102341020
16	WORM SHAFT WASHER	DY-100539020		69	LUBE PORT CAP	DY-101698020
17	E-RING	DY-100047010		70	LUBE PORT CAP SCREW	DY-100202060
18	PILLAR-B	DY-102343010		71	DRAG SPRING WASHER	DY-100088010
19	LEVEL WIND PIN	DY-100464011		72	CLICK HOLDER	DY-101765010
20	SPACER(OPTIONAL)	DY-100025010		73X	STAR DRAG COMPLETE	DY-U02357023
21	LEVEL WIND NUT	DY-100288021		74	CLICKER	DY-101763010
22	FRONT COVER	DY-102323010		75	CLICK PLATE	DY-101764010
23	FRONT COVER SCREW	DY-100152010		76	CLICK PLATE RETAINER	DY-101766011
24	BALL BEARING	DY-104542010		77	HANDLE WASHER	DY-100933010
25	CRANK SHAFT	DY-101324020		78X	HANDLE COMPLETE	DY-101806040
26	IDLER-L WASHER-A	DY-100548010		79	BALL BEARING	DY-104543010
27	IDLER-L	DY-101938020		80	HANDLE KNOB	DY-101812020
28	IDLER-L WASHER-B	DY-100045020		81	BALL BEARING	DY-104543010
29	BEARING PLATE	DY-100817011		82	HANDLE KNOB SCREW	DY-100180010
30	E-RING	DY-100047010		83	HANDLE KNOB CAP	DY-100181050
31	BEARING PLATE SCREW	DY-100112040		85	HANDLE NUT	DY-101176100
32	YOKE HOLDER	DY-100029010		86	HANDLE NUT RETAINER	DY-101798010
33	CLUTCH CAM	DY-100908012		87	SCREW	DY-101202020
34	CLUTCH SPRING	DY-101405010		88X	SPOOL COMPLETE	DY-102339010
35	KICK LEVER	DY-102308011		89	BALL BEARING	DY-100156010
36	KICK LEVER SPRING	DY-102058010		90	PIN	DY-100120010
37	CAM PLATE	DY-101218010		91	BRAKE HOLDER	DY-100996030
38	CAM PLATE SCREW	DY-100697020		92	BRAKE SHOE	DY-100522010
39	PINION YOKE	DY-102083010		92	BRAKE SHOE-A	DY-100522030
40	PINION GEAR	DY-100983013		93	BRAKE SHOE SPRING	DY-100525010
41	PINION YOKE SPRING	DY-100059020		94	BRAKE HOLDER PLATE	DY-101152010
42	RATCHET	DY-100344010		95	BRAKE HOLDER PLATE SCREW	DY-100526010
43	RATCHET WASHER	DY-102247050		96X	PALM SIDE PLATE ASSEMBLY	DY-UA2352010
44	DRIVE GEAR	DY-100976010		98	DECORATOR	DY-102065020
45	DRAG WASHER-L	DY-102377010		99	SPOOL COVER ASSEMBLY	DY-U01304011
46	DRAG WASHER-D1	DY-100057020		105	SPOOL COVER SCREW	DY-100141010
47	DRAG WASHER-A	DY-100985010		106	SPOOL SPACER-A	DY-101850010
48	DRAG WASHER-D2	DY-100986011		107	BALL BEARING	DY-100155010
50	SLEEVE	DY-100418011		108	BEARING RETAINER	DY-102976010
51X	GEAR SIDE PLATE ASSEMBLY	DY-U02351020		110	PIILLAR-A	DY-102332010
53	ONE WAY CLUTCH	DY-102090010		111	DRAG SPRING WASHER	DY-101205010
54	O-RING	DY-100209020		112	DRAG SPACER	DY-100087010
55	BALL BEARING	DY-104541010		113	STOPPER ASSEMBLY	DY-102345010
56	BEARING RETAINER	DY-101588011		114	WASHER(OPTIONAL)	DY-101168010

BB1SHZ

Key #	Description	Order ID #		Key #	Description	Order ID #
1	FRAME	DY-102320010		57X	CAST CONTROL CAP ASSEMBLY	DY-U02254010
2	CLUTCH BAR PLATE-R/L	DY-102327010		58	CLICKER	DY-101674011
4	CLUTCH BAR	DY-102326010		59	CLICK PLATE	DY-101675011
5	CLUTCH LINK	DY-102328010		60	CLICK PLATE RETAINER	DY-101543012
6	CLUTCH BAR SCREW	DY-100335020		61	TENSION WASHER	DY-100073011
7	LEVEL WIND ASSEMBLY	DY-102329010		62	SPOOL SPACER-B	DY-100074011
8	PIPE	DY-102112010		63	LOCKING PIN	DY-101306040
9	WORM SHAFT	DY-103462010		64	E-RING	DY-100621010
10	BALL BEARING	DY-104544010		65	LOCKING PIN SPRING	DY-101308010
12	IDLER-S	DY-100019010		66	GEAR SIDE COVER SCREW-A	DY-100035060
13	WORM SHAFT PIN	DY-100020010		67	GEAR SIDE COVER SCREW-B	DY-100035070
15	WORM SHAFT BUSHING-B	DY-100145011		68	GEAR SIDE COVER SCREW-C	DY-102341020
16	WORM SHAFT WASHER	DY-100539020		69	LUBE PORT CAP	DY-101698020
17	E-RING	DY-100047010		70	LUBE PORT CAP SCREW	DY-100202060
18	PILLAR-B	DY-102343010		71	DRAG SPRING WASHER	DY-100088010
19	LEVEL WIND PIN	DY-100464011		72	CLICK HOLDER	DY-101765010
20	SPACER(OPTIONAL)	DY-100025010		73X	STAR DRAG COMPLETE	DY-U02338033
21	LEVEL WIND NUT	DY-100288021		74	CLICKER	DY-101763010
22	FRONT COVER	DY-102323010		75	CLICK PLATE	DY-101764010
23	FRONT COVER SCREW	DY-100152010		76	CLICK PLATE RETAINER	DY-101766011
24	BALL BEARING	DY-104542010		77	HANDLE WASHER	DY-100933010
25	CRANK SHAFT	DY-101322020		78X	HANDLE COMPLETE	DY-101806040
26	IDLER-L WASHER-A	DY-100548010		79	BALL BEARING	DY-104543010
27	IDLER-L	DY-101938020		80	HANDLE KNOB	DY-101812020
28	IDLER-L WASHER-B	DY-100045020		81	BALL BEARING	DY-104543010
29	BEARING PLATE	DY-100817011		82	HANDLE KNOB SCREW	DY-100180010
30	E-RING	DY-100047010		83	HANDLE KNOB CAP	DY-100181050
31	BEARING PLATE SCREW	DY-100112040		85	HANDLE NUT	DY-100319100
32	YOKE HOLDER	DY-100029010		86	HANDLE NUT RETAINER	DY-101798010
33	CLUTCH CAM	DY-100666012		87	SCREW	DY-101202020
34	CLUTCH SPRING	DY-101336011		88X	SPOOL COMPLETE	DY-102339010
35	KICK LEVER	DY-102307011		89	BALL BEARING	DY-100156010
36	KICK LEVER SPRING	DY-102048010		90	PIN	DY-100120010
37	CAM PLATE	DY-101364010		91	BRAKE HOLDER	DY-100996030
38	CAM PLATE SCREW	DY-100697020		92	BRAKE SHOE	DY-100522010
39	PINION YOKE	DY-102073010		92	BRAKE SHOE-A	DY-100522030
40	PINION GEAR	DY-100980013		93	BRAKE SHOE SPRING	DY-100525010
41	PINION YOKE SPRING	DY-100059020		94	BRAKE HOLDER PLATE	DY-101152010
42	RATCHET	DY-100344010		95	BRAKE HOLDER PLATE SCREW	DY-100526010
43	RATCHET WASHER	DY-102247050		96X	PALM SIDE PLATE ASSEMBLY	DY-UA2322010
44	DRIVE GEAR	DY-100970010		98	DECORATOR	DY-102065020
45	DRAG WASHER-L	DY-102377010		99	SPOOL COVER ASSEMBLY	DY-U01304011
46	DRAG WASHER-D1	DY-100057020		105	SPOOL COVER SCREW	DY-100141010
47	DRAG WASHER-A	DY-100985010		106	SPOOL SPACER-A	DY-101850010
48	DRAG WASHER-D2	DY-100986011		107	BALL BEARING	DY-100155010
50	SLEEVE	DY-100418011		108	BEARING RETAINER	DY-102976010
51X	GEAR SIDE PLATE ASSEMBLY	DY-U02321030		110	PIILLAR-A	DY-102332010
53	ONE WAY CLUTCH	DY-102090010		111	DRAG SPRING WASHER	DY-101205010
54	O-RING	DY-100209020		112	DRAG SPACER	DY-100087010
55	BALL BEARING	DY-104541010		113	STOPPER ASSEMBLY	DY-102345010
56	BEARING RETAINER	DY-101588011		114	WASHER(OPTIONAL)	DY-101168010

BB1SHZL

Key #	Description	Order ID #		Key #	Description	Order ID #
1	FRAME	DY-102350010		57X	CAST CONTROL CAP ASSEMBLY	DY-U02254010
2	CLUTCH BAR PLATE-R/L	DY-102354010		58	CLICKER	DY-101674011
4	CLUTCH BAR	DY-102353010		59	CLICK PLATE	DY-101675011
5	CLUTCH LINK	DY-102355010		60	CLICK PLATE RETAINER	DY-101543012
6	CLUTCH BAR SCREW	DY-100335020		61	TENSION WASHER	DY-100073011
7	LEVEL WIND ASSEMBLY	DY-102329010		62	SPOOL SPACER-B	DY-100074011
8	PIPE	DY-102112010		63	LOCKING PIN	DY-101306040
9	WORM SHAFT	DY-103462010		64	E-RING	DY-100621010
10	BALL BEARING	DY-104544010		65	LOCKING PIN SPRING	DY-101308010
12	IDLER-S	DY-100019010		66	GEAR SIDE COVER SCREW-A	DY-100035060
13	WORM SHAFT PIN	DY-100020010		67	GEAR SIDE COVER SCREW-B	DY-100035070
15	WORM SHAFT BUSHING-B	DY-100145011		68	GEAR SIDE COVER SCREW-C	DY-102341020
16	WORM SHAFT WASHER	DY-100539020		69	LUBE PORT CAP	DY-101698020
17	E-RING	DY-100047010		70	LUBE PORT CAP SCREW	DY-100202060
18	PILLAR-B	DY-102343010		71	DRAG SPRING WASHER	DY-100088010
19	LEVEL WIND PIN	DY-100464011		72	CLICK HOLDER	DY-101765010
20	SPACER(OPTIONAL)	DY-100025010		73X	STAR DRAG COMPLETE	DY-U02357033
21	LEVEL WIND NUT	DY-100288021		74	CLICKER	DY-101763010
22	FRONT COVER	DY-102323010		75	CLICK PLATE	DY-101764010
23	FRONT COVER SCREW	DY-100152010		76	CLICK PLATE RETAINER	DY-101766011
24	BALL BEARING	DY-104542010		77	HANDLE WASHER	DY-100933010
25	CRANK SHAFT	DY-101324020		78X	HANDLE COMPLETE	DY-101806040
26	IDLER-L WASHER-A	DY-100548010		79	BALL BEARING	DY-104543010
27	IDLER-L	DY-101938020		80	HANDLE KNOB	DY-101812020
28	IDLER-L WASHER-B	DY-100045020		81	BALL BEARING	DY-104543010
29	BEARING PLATE	DY-100817011		82	HANDLE KNOB SCREW	DY-100180010
30	E-RING	DY-100047010		83	HANDLE KNOB CAP	DY-100181050
31	BEARING PLATE SCREW	DY-100112040		85	HANDLE NUT	DY-101176100
32	YOKE HOLDER	DY-100029010		86	HANDLE NUT RETAINER	DY-101798010
33	CLUTCH CAM	DY-100908012		87	SCREW	DY-101202020
34	CLUTCH SPRING	DY-101405010		88X	SPOOL COMPLETE	DY-102339010
35	KICK LEVER	DY-102308011		89	BALL BEARING	DY-100156010
36	KICK LEVER SPRING	DY-102058010		90	PIN	DY-100120010
37	CAM PLATE	DY-101218010		91	BRAKE HOLDER	DY-100996030
38	CAM PLATE SCREW	DY-100697020		92	BRAKE SHOE	DY-100522010
39	PINION YOKE	DY-102083010		92	BRAKE SHOE-A	DY-100522030
40	PINION GEAR	DY-100981013		93	BRAKE SHOE SPRING	DY-100525010
41	PINION YOKE SPRING	DY-100059020		94	BRAKE HOLDER PLATE	DY-101152010
42	RATCHET	DY-100344010		95	BRAKE HOLDER PLATE SCREW	DY-100526010
43	RATCHET WASHER	DY-102247050		96X	PALM SIDE PLATE ASSEMBLY	DY-UA2352010
44	DRIVE GEAR	DY-100972010		98	DECORATOR	DY-102065020
45	DRAG WASHER-L	DY-102377010		99	SPOOL COVER ASSEMBLY	DY-U01304011
46	DRAG WASHER-D1	DY-100057020		105	SPOOL COVER SCREW	DY-100141010
47	DRAG WASHER-A	DY-100985010		106	SPOOL SPACER-A	DY-101850010
48	DRAG WASHER-D2	DY-100986011		107	BALL BEARING	DY-100155010
50	SLEEVE	DY-100418011		108	BEARING RETAINER	DY-102976010
51X	GEAR SIDE PLATE ASSEMBLY	DY-U02351030		110	PIILLAR-A	DY-102332010
53	ONE WAY CLUTCH	DY-102090010		111	DRAG SPRING WASHER	DY-101205010
54	O-RING	DY-100209020		112	DRAG SPACER	DY-100087010
55	BALL BEARING	DY-104541010		113	STOPPER ASSEMBLY	DY-102345010
56	BEARING RETAINER	DY-101588011		114	WASHER(OPTIONAL)	DY-101168010