

F E E L T H E D I F F E R E N C E

# KVD ELITE

SPINNING REEL

KVD100G2, KVD200G2, KVD300G2,  
KVDSS300G2



5.6:1

6.2:1

7 BEARING SYSTEM

C40

## FEATURES:

- C40 carbon frame and sideplate reduces weight while enhancing strength
- Double anodized braid-ready aluminum spool
- Hybrid carbon drag system is extremely smooth for catching big fish on light line
- Premium 7-bearing system is durable and features stainless steel bearings for exceptionally smooth reeling

## CARACTÉRISTIQUES:

- Bâti et carter en carbone C40 qui réduisent le poids tout en rehaussant la solidité
- Tambour en aluminium doublement anodisé pour fil tressé
- Système de frein en carbone hybride extrêmement fluide pour attraper le gros poisson sur une ligne légère
- Système haut de gamme durable à 7 roulements en acier inoxydable pour une récupération exceptionnellement fluide

## CARACTERÍSTICAS:

- El armazón y la placa lateral de carbono C40 reducen el peso sin sacrificar resistencia
- Carrete de aluminio con doble anodizado, preparado para trenzado
- El sistema de arrastre híbrido de carbono es extremadamente suave, ideal para capturar peces grandes con sedal ligero
- El sistema premium de 7 cojinetes es duradero y cuenta con cojinetes de acero inoxidable para un enrollado excepcionalmente suave

## REEL SPECIFICATIONS

MODEL	WT.	MAX DRAG	GEAR RATIO	FLUORO CAP.	BRAID CAP.	RPT*
KVD100G2	5.8oz	8lbs	5.6:1	110yds/4lb	100yds/8lb	24"
KVD200G2	7.5oz	16lbs	6.2:1	190yds/6lb	280yds/8lb	31"
KVD300G2	7.7oz	18lbs	6.2:1	205yds/8lb	300yds/10lb	32"
KVDSS300G2	7.7oz	18lbs	6.2:1	120yds/8lb	180yds/10lb	32"

\*Recovery per turn

## CARACTÉRISTIQUES TECHNIQUES DU MOULINET

MODELE	POIDS	FREINAGE MAX	DÉMULTIPLICATION	CAP. FLUORO	CAP. TRESSÉ	TMV*
KVD100G2	164g	3,6kg	5.6:1	100,5m/1,8kg	91,4m/3,62kg	60,9cm
KVD200G2	213g	7,2kg	6.2:1	173,7m/2,7kg	256m/3,62kg	78,7cm
KVD300G2	218g	8,1kg	6.2:1	187,4m/3,6kg	274,3m/4,5kg	81,2cm
KVDSS300G2	218g	8,1kg	6.2:1	109,7m/3,6kg	164,5m/4,5kg	81,2cm

\*Rotation par tour de moulinet

## ESPECIFICACIONES DEL CARRETE

MODELO	PESO	MAX ARRASTRE	RELACION DE CAP. ENGRANAJES MONO	CAP. DE TRENZA	RPT*
KVD100G2	164g	3,6kg	5.6:1	100,5m/1,8kg	91,4m/3,62kg
KVD200G2	213g	7,2kg	6.2:1	173,7m/2,7kg	256m/3,62kg
KVD300G2	218g	8,1kg	6.2:1	187,4m/3,6kg	274,3m/4,5kg
KVDSS300G2	218g	8,1kg	6.2:1	109,7m/3,6kg	164,5m/4,5kg

\*Recuperación por giro

**Driven by Innovation. Fueled with Passion. Feel the Difference!**  
Animé par l'innovation. Inspiré par la passion. Sentez la différence!  
Impulsados por la innovación. Alimentados con pasión. ¡Sienta la diferencia!

**lews.com**

## Maintenance and Care

While applying lubricant to your Lew's® KVD Elite reel, avoid using multi-purpose oil. Use lightweight silicone based oils or greases made for fishing reels. Apply oil to all bearings and the main shaft. Apply grease to the bushings, pinion gears and main gears.

After usage your reel should be inspected for dirt or sand and cleaned if excessive buildup is present. If your reel has come in contact with saltwater it is important to flush all parts with water, dry and re-lubricate your reel. Thorough diligent cleaning and maintenance of your Lew's® reel will provide you with years of reliability and sound performance.

## Entretien et soin

Lors du graissage de votre moulinet Lew's® KVD Elite, évitez d'utiliser une huile à usages multiples. Utilisez des huiles ou des graisses légères à base de silicone prévues pour les moulinets de canne à pêche. Appliquez l'huile à tous les roulements et à l'arbre principal. Appliquez la graisse aux bagues de palier, aux engrènements à pignons et aux principaux engrènements.

Après avoir utilisé le moulinet, celui-ci doit être inspecté pour déceler toute trace de saleté ou de sable, et nettoyé en cas d'accumulation excessive. Si votre moulinet a été en contact avec de l'eau de mer, il est important de rincer tous ses éléments à l'eau douce, de le sécher et de le lubrifier de nouveau. Avec des nettoyages et un entretien diligents, votre moulinet Lew's® vous procurera des années de fonctionnement fiable et performant.

## Mantenimiento y cuidado

Al aplicar lubricante a su carrete Lew's® KVD Elite, evite usar aceite multiusos. Use aceites o grasas a base de silicona ligeras hechas para carretes de pesca. Aplique aceite a todos los rodamientos y el eje principal. Aplique grasa a los bujes, engranajes de piñón y engranajes principales.

Después de usar su carrete, debe inspeccionar que no tenga polvo o arena, y limpielo si hay una acumulación excesiva. Si su carrete ha tenido contacto con agua salada, es importante enjuagar todas las piezas con agua y volver a lubricar el carrete. Mediante unda limpieza y mantenimiento diligente su carrete Lew's® le proporcionará años de confiabilidad y desempeño sin problemas.

## Lew's One Year Limited Warranty

For complete warranty information and registration go to [lews.com/warranties](http://lews.com/warranties).

## Garantie limitée Lew's de 1 an

Pour de l'information sur la garantie et l'enregistrement du produit, allez à [lews.com/warranties](http://lews.com/warranties).

## Garantía limitada por un año

Para registrar y obtener información de la garantía, visite [lews.com/warranties](http://lews.com/warranties).

# lews.com

**For professional cleaning and maintenance contact:**

Lew's Speed Services  
[service@lews.com](mailto:service@lews.com)  
Phone: 417-522-1093

**Pour le nettoyage et l'entretien professionnels contactez:**

Lew's Speed Services  
[service@lews.com](mailto:service@lews.com)  
Téléphone: 417-522-1093

**Para obtener una limpieza y mantenimiento profesional comuníquese con:**

Lew's Speed Services  
[service@lews.com](mailto:service@lews.com)  
Teléfono: 417-522-1093

## ATTENTION BRAIDED LINE USERS!

If your Lew's® Spinning reel has a knurled spool or rubber arbor (designed for tying braided line directly to the spool), you can tie braid directly to your spool using a uni-knot.

If your Lew's® Spinning reel does not have a knurled spool or rubber arbor, you will need to first tie on and spool at least 20 revolutions of monofilament line, with either a back-to-back uni-knot or an Albright knot.

Continue to spool your reel as normal, keeping strong tension on the line to ensure the line is firmly wound onto the spool to keep from "digging in" to underlying line layers when pressure is put on the line from fighting fish.

**FAILURE TO PROPERLY SPOOL BRAIDED LINE ONTO YOUR REELS SPOOL WILL RESULT IN LINE SLIPPAGE, AND THE IMPRESSION YOUR DRAG IS NOT WORKING PROPERLY.**

## À L'ATTENTION DES UTILISATEURS DE FIL TRESSÉ

Si votre moulinet à lancer léger Lew's® est doté d'un tambour moleté ou d'une tige en caoutchouc (conçue pour attacher le fil tressé directement au tambour), vous pouvez attacher le fil tressé directement à votre tambour par un uninoeud.

Si le tambour de votre moulinet à lancer léger Lew's® n'est pas doté d'un tambour moleté ou d'une tige en caoutchouc, vous devrez d'abord attacher et embobiner au moins 20 tours de fil monofilament, puis attacher le fil tressé au fil monofilament par un uninoeud consécutif ou un noeud Albright.

Continuez d'embobiner votre moulinet comme à l'habitude, en gardant une forte tension sur le fil de manière à ce qu'il s'enroule fermement sur le tambour. Vous éviterez ainsi que le fil « s'enfonce » dans les couches de fil sous-jacentes lorsqu'une tension s'exerce sur la ligne en combattant le poisson.

**L'ENROULEMENT INADÉQUAT DU FIL TRESSÉ SUR LE TAMBOUR DU MOULINET ENTRÂÎNERA UN GLISSEMENT DU FIL, CE QUI POURRAIT VOUS DONNER L'IMPRESSIION QUE LE FREIN NE FONCTIONNE PAS CORRECTEMENT.**

## ¡ATENCIÓN USUARIOS DE SEDAL TRENZADO!

Si su carrete de bobina Lew's® tiene una bobina moleteada o un husillo de caucho (diseñado para amarrar un sedal trenzado directamente a la bobina) puede amarrar la trenza directamente a su bobina usando un nudo UNI.

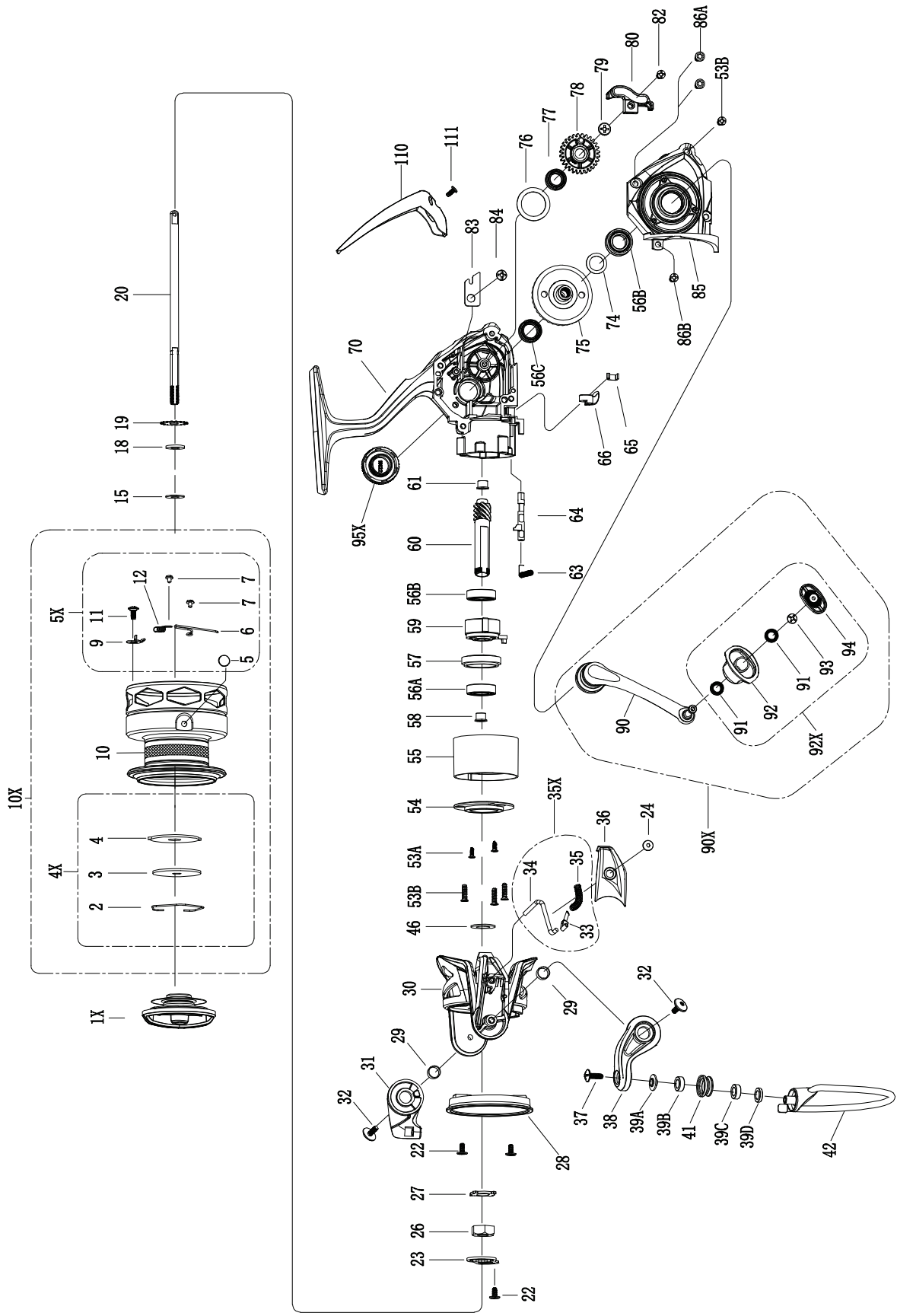
Si su carrete de bobina Lew's® no tiene una bobina moleteada o un husillo de caucho, necesitará amarrar primero y bobinar al menos 20 revoluciones de sedal de monofilamento, ya sea con un nudo UNI doble o un nudo Albright.

Continúe bobinado su carrete como lo haría normalmente, manteniendo una fuerte tensión en el sedal a fin de asegurarse de que el sedal esté firmemente enrollado en la bobina y evitar que se "entierre" en las capas de sedal subyacente cuando aplique presión al pelear con un pez.

**NO BOBINAR CORRECTAMENTE UN SEDAL TRENZADO EN LA BOBINA DEL CARRETE PROVOCARÁ QUE EL SEDAL SE RESBALE Y DARÁ LA IMPRESIÓN DE QUE EL ARRASTRE NO FUNCIONA CORRECTAMENTE.**

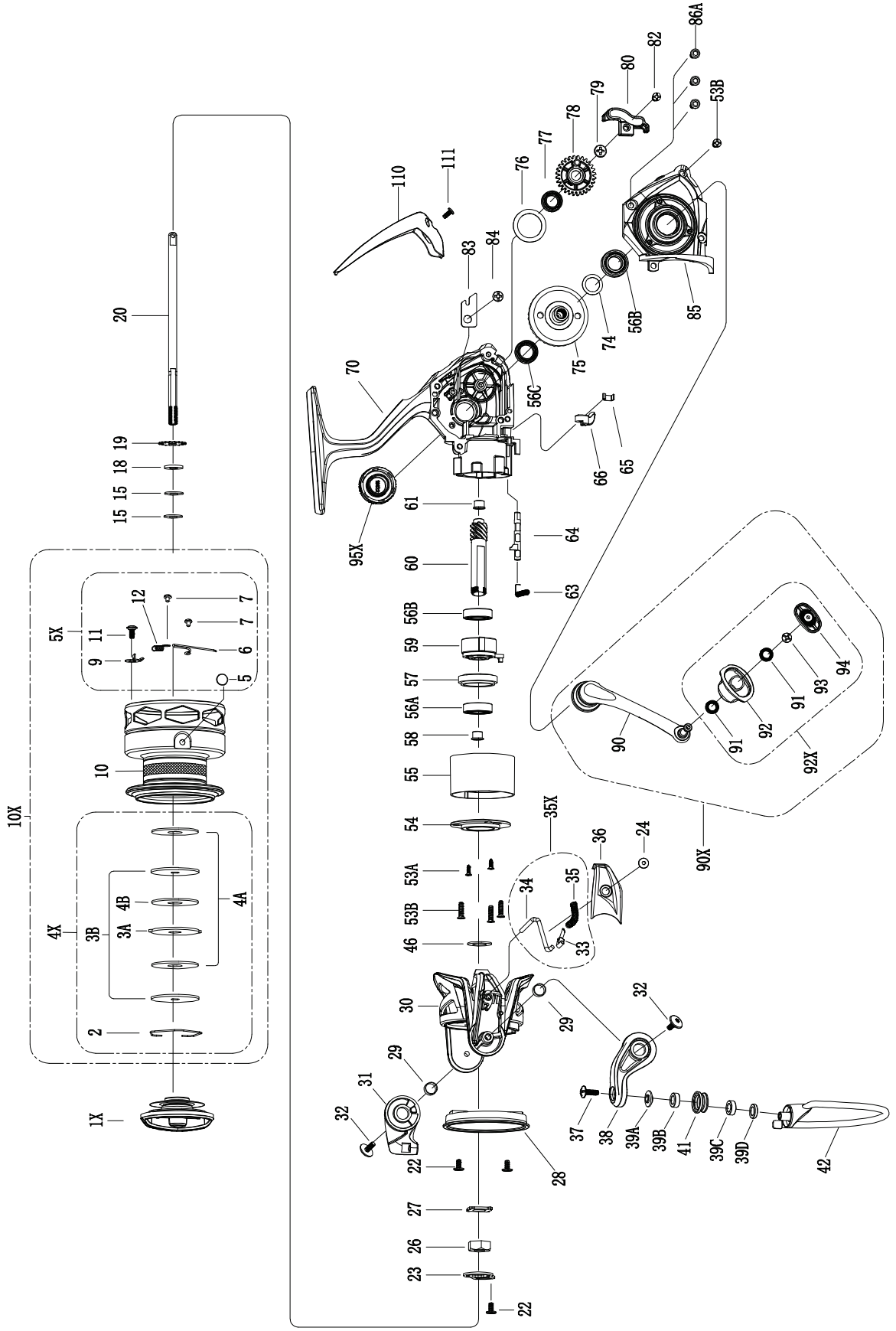
# KVD ELITE

## KVD100G2



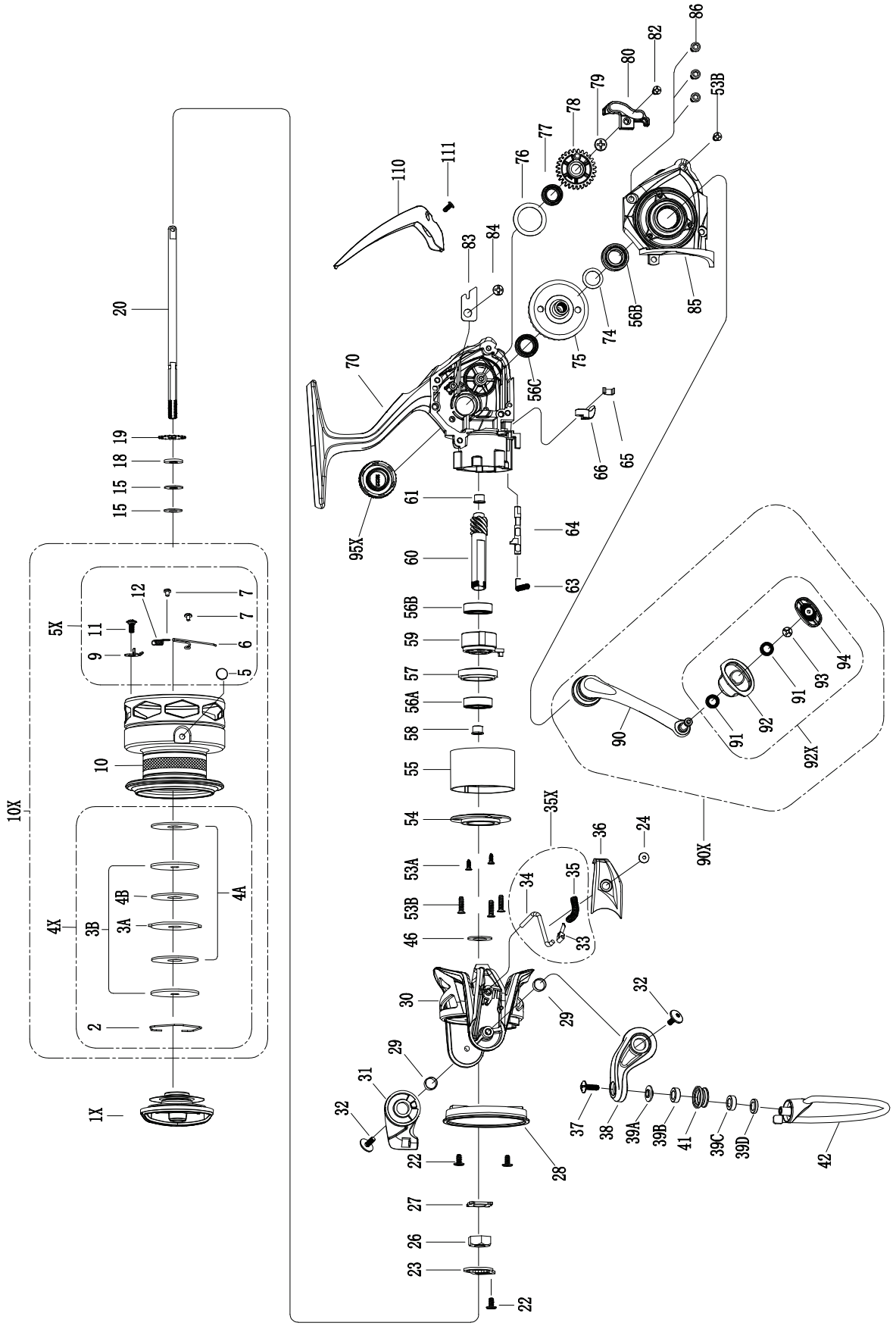
# KVD ELITE

## KVD200G2



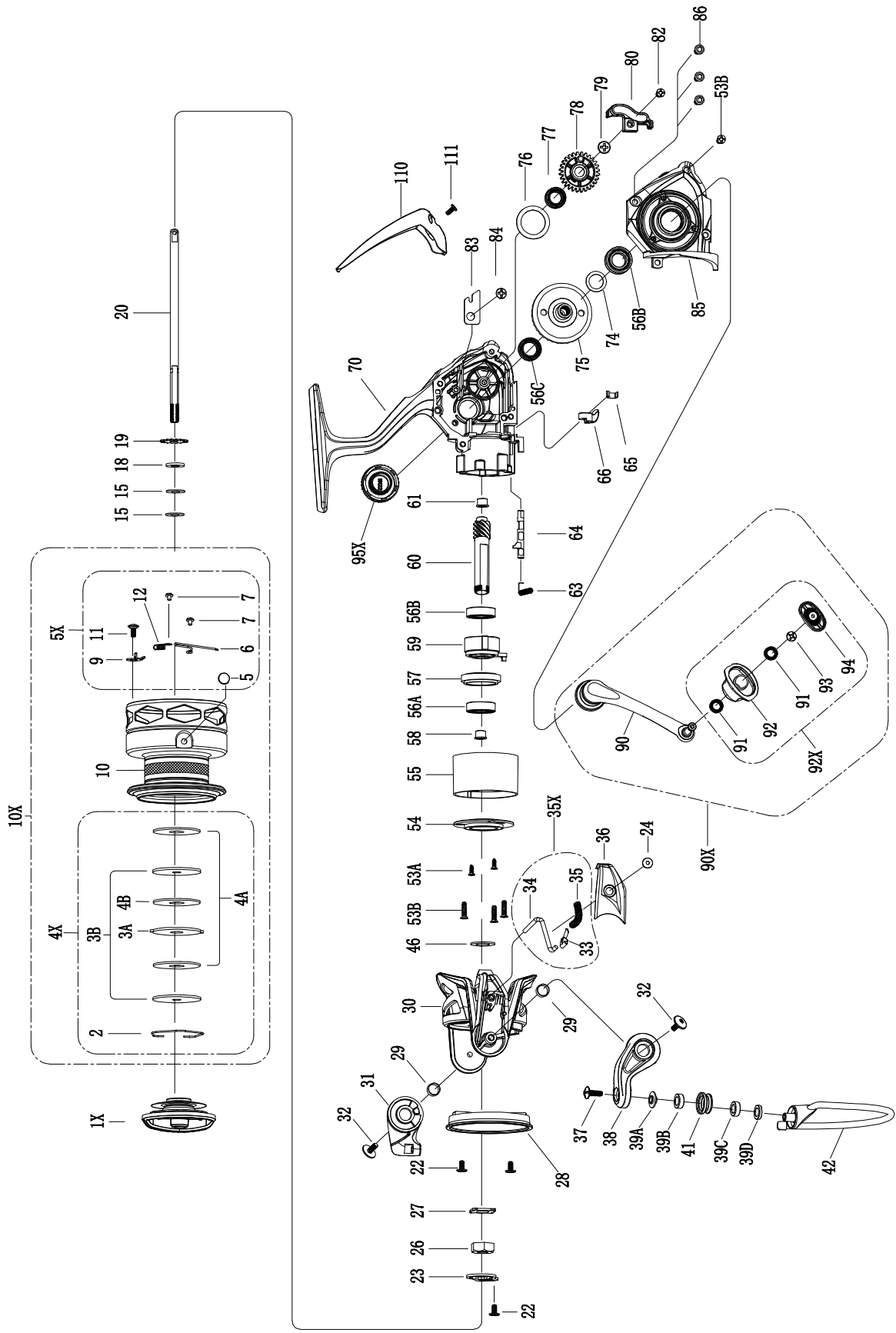
# KVD ELITE

## KVD300G2



# KVD ELITE

## KVDSS300G2





LEWS - Quick Kits

KEY NO.	DESCRIPTION	PART NUMBER	QTY.
1X	DRAG KNOB ASSEMBLY	WAS332-01A	1
4X	DRAG KIT	WAS380-01A	1
2	Retaining Ring		1
3	Metal D washer (3 pk)		1
4	Keyed Friction Washer (3 pk)		1
5X	SPOOL CLICKER & LINE CLIP KIT	YAS303-01A	1
5	Line Clip		1
6	Line Clip Spring		1
7	Line Clip Screw (3 pk)		1
9	Clicker		1
11	Clicker Screw- (3 pk)		1
12	Clicker Spring		1
10X	SPOOL ASSEMBLY	WAS421-01A	1
4X	Drag kit		1
10	Spool Sub Assembly		1
5X	Spool Click/Clip Kit		1
35X	BAIL TRIP KIT	WAS319-01A	1
33	Cam		1
34	Kick Lever		1
35	Bail Spring		1
90X	HANDLE ASSEMBLY	WAS418-01A	1
90	Handle Arm Sub-Assembly		1
92X	Handle Knob Sub-Assembly		1
92X	HANDLE KNOB KIT	YAS313-01A	1
91	Bushing(3pk)		2
92	Handle Knob		1
93	Handle Knob Screw (3pk)		1
94	Handle Knob Badge		1
95X	DUST CAP ASSEMBLY	YAS373-01A	1

PART LIST -- KVD100G2

KEY NO.	DESCRIPTION	PART NUMBER	QTY.	KEY NO.	DESCRIPTION	PART NUMBER	QTY.
1X	Drag Knob Assembly	WAS332-01A	1	53A	Pinion Ball Bearing Holder Screw (3 pk)	YAS051-01A-KIT	1
2	Retaining Ring	XAS172-01A	1	53B	Pinion Ball Bearing Holder Screw (3 pk)	WAS051-01A-KIT	2
3	Metal D washer (3 pk)	XAS080-01A-KIT	1	54	Pinion Ball Bearing Holder	WAS122-01A	1
4	Keyed Friction Washer (3pk)	XAS033-01A-KIT	1	55	Body Head Cover Ring	WAS261-01A	1
5	Line Clip	XAS128-01A	1	56A	Pinion Ball Bearing_Top	YAS028-01A	1
6	Line Clip Spring	WAS009-01A	1	56B	Pinion Ball Bearing_Bottom	XAS028-01A	2
7	Line Clip Screw (3pk)	YAS114-01A-KIT	1	56C	Driver Gear Ball Bearing_Bottom	WAS028-01A	1
9	Clicker	YAS103-01A	1	57	Pinion Ball Bearing Retainer	WAS040-01A	1
10	Spool Sub Assembly -- Use 10X	WAS321-01A	1	58	Pinion Bushing_Top	WAS029-01A	1
11	Clicker Screw (3pk)	YAS246-01A-KIT	1	59	Clutch Unit	YAS463-01A	1
12	Clicker Spring	YAS068-01A	1	60	Pinion	WAS011-01A	1
15	Spool Adjust Washer	YAS030-01A	2	61	Main Shaft Bushing	YAS227-01A	1
18	Washer	YAS213-01A	1	63	Clutch Spring	YAS216-01A	1
19	Click Gear	YAS037-01A	1	64	Anti-Reverse Lever	WAS090-01A	1
20	Main Shaft	WAS015-01A	1	65	Anti-Reverse Pawl	ZAS049-01A	1
22	Screw (3 pk)	YAS077-01A-KIT	1	66	Anti-Reverse Switch	YAS059-01A	1
23	Rotor Nut Retainer	YAS118-01A	1	70	Body Sub Assembly	WAS301-01A	1
24	Rotor Cover Screw (3 pk)	XAS077-01A-KIT	1	74	Drive Gear Adjustment Washer	YAS005-01A	1
26	Rotor Nut	YAS006-01A	1	75	Drive Gear	WAS312-01A	1
27	Rotor Lock Washer	YAS065-01A	1	76	O/S Gear Washer	ZAS158-01A	1
28	Rotor Ring	WAS179-01A	1	77	O/S Gear Bushing	WAS158-01A	1
29	Bail Holder/Bail Arm Bushing	YAS259-01A	2	78	O/S Gear	WAS353-01A	1
30	Rotor	WAS009-01A	1	79	O/S Gear Screw(3pk)	WAS111-01A-KIT	1
31	Bail Holder	WAS017-01A	1	80	O/S Slider	WAS025-01A	1
32	Arm Lever Screw (3pk)	YAS225-01A-KIT	1	82	Main Shaft Screw(3pk)	YAS100-01A-KIT	1
33	Cam	WAS031-01A	1	83	O/S Slider Plate	WAS084-01A	1
34	Kick Lever	WAS019-01A	1	84	O/S Slider Plate Screw(3pk)	YAS085-01A-KIT	1
35	Bail Spring	WAS022-01A	1	85	Side Cover Sub-Assembly	WAS323-01A	1
36	Rotor Cover	WAS087-01A	1	86A	Side Cover Screw (3pk)	WAS057-01A	1
37	Line Roller Screw(3pk)	YAS108-01A-KIT	1	86B	Side Cover Screw (3pk)	XAS057-01A	1
38	Arm Lever	WAS007-01A	1	90	Handle Arm Sub-Assembly	WAS318-01A	1
39A	Line Roller Washer	WAS102-01A	1	91	Ball Bearing	YAS016-01A	2
39B	Line Roller Bushing	XAS102-01A	1	92	Handle Knob	YAS013-01A	1
39C	Line Roller Bushing	YAS102-01A	1	93	Handle Knob Screw(3pk)	YAS123-01A-KIT	1
39D	Line Roller Bushing	ZAS102-01A	1	94	Handle Knob Badge	YAS169-01A	1
41	Line Roller	WAS004-01A	1	95X	Dust Cap Assembly	YAS373-01A	1
42	Bail Wire Assembly	WAS347-01A	1	110	Butt Cap	WAS250-01A	1
46	Washer	XAS045-01A	1	111	Butt Cap Screw(3pk)	ZAS057-01A-KIT	1

Effective: August 2025

**LEWS - Quick Kits**

KEY NO.	DESCRIPTION	PART NUMBER	QTY.
1X	DRAG KNOB ASSEMBLY	XAS332-01A	1
4X	DRAG KIT	YAS380-01A	1
2	Retaining Ring		1
3A	Metal E washer (3 pk)		1
3B	Metal D washer (3 pk)		1
4A	Teflon Friction Washer (3pk)		1
4B	Carbon Friction Washer (3pk)		1
5X	SPOOL CLICKER & LINE CLIP KIT	YAS303-01A	1
5	Line Clip		1
6	Line Clip Spring		1
7	Line Clip Screw (3 pk)		1
9	Clicker		1
11	Clicker Screw (3pk)		1
12	Clicker Spring		1
10X	SPOOL ASSEMBLY	XAS421-01A	1
4X	Drag Kit		1
10	Spool Sub Assembly		1
5X	Spool Click/Clip Kit		1
35X	BAIL TRIP KIT	XAS319-01A	1
33	Cam		1
34	Kick Lever		1
35	Bail Spring		1
90X	HANDLE ASSEMBLY	XAS418-01A	1
90	Handle Arm Sub-Assembly		1
92X	Handle Knob Sub-Assembly		1
92X	HANDLE KNOB KIT	YAS313-01A	1
91	Bushing		2
92	Handle Knob		1
93	Handle Knob Screw (3pk)		1
94	Handle Knob Badge		1
95X	DUST CAP ASSEMBLY	YAS373-01A	1

**PART LIST -- KVD200G2**

KEY NO.	DESCRIPTION	PART NUMBER	QTY.	KEY NO.	DESCRIPTION	PART NUMBER	QTY.
1X	Drag Knob Assembly	XAS332-01A	1	46	Washer	YAS045-01A	1
2	Retaining Ring	YAS172-01A	1	53A	Pinion Ball Bearing Holder Screw (3 pk)	YAS051-01A-RIT	1
3A	Metal E washer (3 pk)	YAS081-01A-KIT	1	53B	Pinion Ball Bearing Holder Screw (3 pk)	XAS051-01A-KIT	2
3B	Metal D washer (3 pk)	YAS080-01A-KIT	1	54	Pinion Ball Bearing Holder	YAS122-01A	1
4A	Teflon Friction Washer (3pk)	YAS033-01A-KIT	1	55	Body Head Cover Ring	YAS261-01A	1
4B	Carbon Friction Washer (3pk)	XAS033-01A-KIT	1	56A	Pinion Ball Bearing_Top	YAS028-01A	1
5	Line Clip	YAS128-01A	1	56B	Pinion Ball Bearing_Bottom	XAS028-01A	2
6	Line Clip Spring	YAS049-01A	1	56C	Driver Gear Ball Bearing_Bottom	WAS028-01A	1
7	Line Clip Screw (3 pk)	YAS114-01A-KIT	1	57	Pinion Ball Bearing Retainer	YAS040-01A	1
9	Clicker	YAS103-01A	1	58	Pinion Bushing_Top	YAS029-01A	1
10	Spool Sub Assembly -- Use 10X	<del>YAS321-01A</del>	1	59	Clutch Unit	YAS463-01A	1
11	Clicker Screw (3pk)	YAS246-01A-KIT	1	60	Pinion	YAS011-01A	1
12	Clicker Spring	YAS068-01A	1	61	Main Shaft Bushing	YAS227-01A	1
15	Spool Adjust Washer	YAS030-01A	2	63	Clutch Spring	YAS216-01A	1
18	Washer	YAS213-01A	1	64	Anti-Reverse Pawl	YAS090-01A	1
19	Click Gear	YAS037-01A	1	65	Anti-Reverse Lever	ZAS049-01A	1
20	Main Shaft	XAS015-01A	1	66	Anti-Reverse Switch	YAS059-01A	1
22	Screw (3 pk)	YAS077-01A-KIT	1	70	Body Sub Assembly	XAS301-01A	1
23	Rotor Nut Retainer	YAS118-01A	1	74	Drive Gear Adjustment Washer	YAS045-01A	1
24	Rotor Cover Screw (3 pk)	XAS077-01A-KIT	1	75	Drive Gear	YAS312-01A	1
26	Rotor Nut	YAS006-01A	1	76	O/S Gear Washer	YAS158-01A	1
27	Rotor Lock Washer	YAS065-01A	1	77	O/S Gear Bushing	XAS158-01A	1
28	Rotor Ring	XAS179-01A	1	78	O/S Gear	YAS353-01A	1
29	Bail Holder/Bail Arm Bushing	YAS259-01A	2	79	O/S Gear Screw(3pk)	YAS111-01A-KIT	1
30	Rotor	XAS009-01A	1	80	O/S Slider	YAS025-01A	1
31	Bail Holder	YAS017-01A	1	82	Main Shaft Screw(3pk)	YAS100-01A-RIT	1
32	Arm Lever Screw (3pk)	YAS225-01A-KIT	1	83	O/S Slider Plate	YAS084-01A	1
33	Cam	YAS031-01A	1	84	O/S Slider Plate Screw(3pk)	YAS085-01A-RIT	1
34	Kick Lever	XAS019-01A	1	85	Side Cover Sub-Assembly	XAS323-01A	1
35	Bail Spring	<b>XAS022-01A</b>	1	86	Side Cover Screw (3pk)	YAS057-01A	1
36	Rotor Cover	XAS087-01A	1	90	Handle Arm Sub-Assembly	XAS318-01A	1
37	Line Roller Screw(3pk)	YAS108-01A-KIT	1	91	Ball Bearing	YAS016-01A	2
38	Arm Lever	YAS007-01A	1	92	Handle Knob	YAS013-01A	1
39A	Line Roller Washer	WAS101-01A	1	93	Handle Knob Screw(3pk)	YAS123-01A-RIT	1
39B	Line Roller Bushing	XAS102-01A	1	94	Handle Knob Badge	YAS169-01A	1
39C	Line Roller Bushing	YAS102-01A	1	95X	Dust Cap Assembly	YAS373-01A	1
39D	Line Roller Bushing	ZAS101-01A	1	110	Butt Cap	YAS250-01A	1
41	Line Roller	YAS004-01A	1	111	Butt Cap Screw(3pk)	ZAS057-01A-RIT	1
42	Bail Wire Assembly	XAS347-01A	1				

Effective: August 2025



### LEWS - Quick Kits

KEY NO.	DESCRIPTION	PART NUMBER	QTY.
TX	DRAG KNOB ASSEMBLY	YAS332-01A	1
4X	DRAG KIT	YAS380-01A	1
2	Retaining Ring		1
3A	Metal E washer (3 pk)		1
3B	Metal D washer (3 pk)		1
4A	Teflon Friction Washer (3pk)		1
4B	Carbon Friction Washer (3pk)		1
5X	SPOOL CLICKER & LINE CLIP KIT	YAS303-01A	1
5	Line Clip		1
6	Line Clip Spring		1
7	Line Clip Screw (3 pk)		1
9	Clicker		1
11	Clicker Screw (3pk)		1
12	Clicker Spring		1
10X	SPOOL ASSEMBLY	YAS421-01A	1
4X	Drag Kit		1
10	Spool Sub Assembly		1
5X	Spool Click/Clip Kit		1
35X	BAIL TRIP KIT	YAS319-01A	1
33	Cam		1
34	Kick Lever		1
35	Bail Spring		1
90X	HANDLE ASSEMBLY	YAS418-01A	1
90	Handle Arm Sub-Assembly		1
92X	Handle Knob Sub-Assembly		1
92X	HANDLE KNOB KIT	YAS313-01A	1
91	Bushing		2
92	Handle Knob		1
93	Handle Knob Screw (3pk)		1
94	Handle Knob Badge		1
95X	DUST CAP ASSEMBLY	YAS373-01A	1

### PART LIST -- KVD300G2

KEY NO.	DESCRIPTION	PART NUMBER	QTY.	KEY NO.	DESCRIPTION	PART NUMBER	QTY.
1X	Drag Knob Assembly	YAS332-01A	1	46	Washer	XAS045-01A	1
2	Retaining Ring	YAS172-01A	1	53A	Pinion Ball Bearing Holder Screw (3 pk)	YAS051-01A-KIT	1
3A	Metal E washer (3 pk)	YAS081-01A-KIT	1	53B	Pinion Ball Bearing Holder Screw (3 pk)	XAS051-01A-KIT	2
3B	Metal D washer (3 pk)	YAS080-01A-KIT	1	54	Pinion Ball Bearing Holder	YAS122-01A	1
4A	Teflon Friction Washer (3pk)	YAS033-01A-KIT	1	55	Body Head Cover Ring	YAS261-01A	1
4B	Carbon Friction Washer (3pk)	XAS033-01A-KIT	1	56A	Pinion Ball Bearing_Top	YAS028-01A	1
5	Line Clip	YAS128-01A	1	56B	Pinion Ball Bearing_Bottom	XAS028-01A	2
6	Line Clip Spring	YAS049-01A	1	56C	Driver Gear Ball Bearing_Bottom	WAS028-01A	1
7	Line Clip Screw (3 pk)	YAS114-01A-KIT	1	57	Pinion Ball Bearing Retainer	YAS040-01A	1
9	Clicker	YAS103-01A	1	58	Pinion Bushing_Top	YAS029-01A	1
10	Spool Sub Assembly -- Use 10X	<del>YAS323-01A</del>	1	59	Clutch Unit	YAS463-01A	1
11	Clicker Screw (3pk)	YAS246-01A-KIT	1	60	Pinion	YAS011-01A	1
12	Clicker Spring	YAS068-01A	1	61	Main Shaft Bushing	YAS227-01A	1
15	Spool Adjust Washer	YAS030-01A	2	63	Clutch Spring	YAS216-01A	1
18	Washer	YAS213-01A	1	64	Anti-Reverse Lever	YAS090-01A	1
19	Click Gear	YAS037-01A	1	65	Anti-Reverse Pawl	ZAS049-01A	1
20	Main Shaft	YAS015-01A	1	66	Anti-Reverse Switch	YAS059-01A	1
22	Screw (3 pk)	YAS077-01A-KIT	1	70	Body Sub Assembly	YAS301-01A	1
23	Rotor Nut Retainer	YAS118-01A	1	74	Drive Gear Adjustment Washer	YAS045-01A	1
24	Rotor Cover Screw (3 pk)	XAS077-01A-KIT	1	75	Drive Gear	YAS312-01A	1
26	Rotor Nut	YAS006-01A	1	76	O/S Gear Washer	YAS158-01A	1
27	Rotor Lock Washer	YAS065-01A	1	77	O/S Gear Bushing	XAS158-01A	1
28	Rotor Ring	YAS179-01A	1	78	O/S Gear	YAS353-01A	1
29	Bail Holder/Bail Arm Bushing	YAS259-01A	2	79	O/S Gear Screw(3pk)	YAS111-01A-KIT	1
30	Rotor	YAS009-01A	1	80	O/S Slider	YAS025-01A	1
31	Bail Holder	YAS017-01A	1	82	Main Shaft Screw(3pk)	YAS100-01A-KIT	1
32	Arm Lever Screw (3pk)	YAS225-01A-KIT	1	83	O/S Slider Plate	YAS084-01A	1
33	Cam	YAS031-01A	1	84	O/S Slider Plate Screw(3pk)	YAS085-01A-KIT	1
34	Kick Lever	YAS019-01A	1	85	Side Cover Sub-Assembly	YAS323-01A	1
35	Bail Spring	YAS022-01A	1	86	Side Cover Screw (3pk)	YAS057-01A	1
36	Rotor Cover	YAS087-01A	1	90	Handle Arm Sub-Assembly	YAS318-01A	1
37	Line Roller Screw(3pk)	YAS108-01A-KIT	1	91	Ball Bearing	YAS016-01A	2
38	Arm Lever	YAS007-01A	1	92	Handle Knob	YAS013-01A	1
39A	Line Roller Washer	XAS101-01A	1	93	Handle Knob Screw(3pk)	YAS123-01A-KIT	1
39B	Line Roller Bushing	XAS102-01A	1	94	Handle Knob Badge	YAS169-01A	1
39C	Line Roller Bushing	YAS102-01A	1	95X	Dust Cap Assembly	YAS373-01A	1
39D	Line Roller Bushing	ZAS101-01A	1	110	Butt Cap	YAS250-01A	1
41	Line Roller	YAS004-01A	1	111	Butt Cap Screw(3pk)	ZAS057-01A-KIT	1
42	Bail Wire Assembly	YAS347-01A	1				

Effective: August 2025

### LEWS - Quick Kits

KEY NO.	DESCRIPTION	PART NUMBER	QTY.
TX	DRAG KNOB ASSEMBLY	ZAS332-01A	1
4X	DRAG KIT	ZAS380-01A	1
2	Retaining Ring		1
3A	Metal E washer (3 pk)		1
3B	Metal D washer (3 pk)		1
4A	Teflon Friction Washer (3pk)		1
4B	Carbon Friction Washer (3pk)		1
5X	SPOOL CLICKER & LINE CLIP KIT	YAS303-01A	1
5	Line Clip		1
6	Line Clip Spring		1
7	Line Clip Screw (3 pk)		1
9	Clicker		1
11	Clicker Screw (3pk)		1
12	Clicker Spring		1
10X	SPOOL ASSEMBLY	ZAS421-01A	1
4X	Drag Kit		1
10	Spool Sub Assembly		1
5X	Spool Click/Clip Kit		1
35X	BAIL TRIP KIT	YAS319-01A	1
33	Cam		1
34	Kick Lever		1
35	Bail Spring		1
90X	HANDLE ASSEMBLY	YAS418-01A	1
90	Handle Arm Sub- Assembly		1
92X	Handle Knob Sub- Assembly		1
92X	HANDLE KNOB KIT	YAS313-01A	1
91	Bushing		2
92	Handle Knob		1
93	Handle Knob Screw (3pk)		1
94	Handle Knob Badge		1
95X	DUST CAP ASSEMBLY	YAS373-01A	1

### PART LIST -- KVDSS300G2

KEY NO.	DESCRIPTION	PART NUMBER	QTY.	KEY NO.	DESCRIPTION	PART NUMBER	QTY.
1X	Drag Knob Assembly	ZAS332-01A	1	46	Washer	XAS045-01A	1
2	Retaining Ring	ZAS172-01A	1	53A	Pinion Ball Bearing Holder Screw (3 pk)	YAS051-01A-KIT	1
3A	Metal E washer (3 pk)	ZAS081-01A-KIT	1	53B	Pinion Ball Bearing Holder Screw (3 pk)	XAS051-01A-KIT	2
3B	Metal D washer (3 pk)	ZAS080-01A-KIT	1	54	Pinion Ball Bearing Holder	YAS122-01A	1
4A	Teflon Friction Washer (3pk)	ZAS033-01A-KIT	1	55	Body Head Cover Ring	YAS261-01A	1
4B	Carbon Friction Washer (3pk)	ZAS034-01A-KIT	1	56A	Pinion Ball Bearing_Top	YAS028-01A	1
5	Line Clip	YAS128-01A	1	56B	Pinion Ball Bearing_Bottom	XAS028-01A	2
6	Line Clip Spring	YAS049-01A	1	56C	Driver Gear Ball Bearing_Bottom	WAS028-01A	1
7	Line Clip Screw (3 pk)	YAS114-01A-KIT	1	57	Pinion Ball Bearing Retainer	YAS040-01A	1
9	Clicker	YAS103-01A	1	58	Pinion Bushing_Top	YAS029-01A	1
10	Spool Sub Assembly -- Use 10X	<del>ZAS321-01A</del>	1	59	Clutch Unit	YAS463-01A	1
11	Clicker Screw (3pk)	YAS246-01A-KIT	1	60	Pinion	YAS011-01A	1
12	Clicker Spring	YAS068-01A	1	61	Main Shaft Bushing	YAS227-01A	1
15	Spool Adjust Washer	YAS030-01A	2	63	Clutch Spring	YAS216-01A	1
18	Washer	YAS213-01A	1	64	Anti-Reverse Lever	YAS090-01A	1
19	Click Gear	YAS037-01A	1	65	Anti-Reverse Pawl	ZAS049-01A	1
20	Main Shaft	YAS015-01A	1	66	Anti-Reverse Switch	YAS059-01A	1
22	Screw (3 pk)	YAS077-01A-KIT	1	70	Body Sub Assembly	ZAS301-01A	1
23	Rotor Nut Retainer	YAS118-01A	1	74	Drive Gear Adjustment Washer	YAS045-01A	1
24	Rotor Cover Screw (3 pk)	XAS077-01A-KIT	1	75	Drive Gear	YAS312-01A	1
26	Rotor Nut	YAS006-01A	1	76	O/S Gear Washer	YAS158-01A	1
27	Rotor Lock Washer	YAS065-01A	1	77	O/S Gear Bushing	XAS158-01A	1
28	Rotor Ring	YAS179-01A	1	78	O/S Gear	YAS353-01A	1
29	Bail Holder/Bail Arm Bushing	YAS259-01A	2	79	O/S Gear Screw(3pk)	YAS111-01A-KIT	1
30	Rotor	YAS009-01A	1	80	O/S Slider	YAS025-01A	1
31	Bail Holder	YAS017-01A	1	82	Main Shaft Screw(3pk)	YAS100-01A-KIT	1
32	Arm Lever Screw (3pk)	YAS225-01A-KIT	1	83	O/S Slider Plate	YAS084-01A	1
33	Cam	YAS031-01A	1	84	O/S Slider Plate Screw(3pk)	YAS085-01A-KIT	1
34	Kick Lever	YAS019-01A	1	85	Side Cover Sub-Assembly	YAS323-01A	1
35	Bail Spring	YAS022-01A	1	86	Side Cover Screw (3pk)	YAS057-01A	1
36	Rotor Cover	YAS087-01A	1	90	Handle Arm Sub-Assembly	YAS318-01A	1
37	Line Roller Screw(3pk)	YAS108-01A-KIT	1	91	Ball Bearing	YAS016-01A	2
38	Arm Lever	YAS007-01A	1	92	Handle Knob	YAS013-01A	1
39A	Line Roller Washer	XAS101-01A	1	93	Handle Knob Screw(3pk)	YAS125-01A-KIT	1
39B	Line Roller Bushing	XAS102-01A	1	94	Handle Knob Badge	YAS169-01A	1
39C	Line Roller Bushing	YAS102-01A	1	95X	Dust Cap Assembly	YAS373-01A	1
39D	Line Roller Bushing	ZAS101-01A	1	110	Butt Cap	YAS250-01A	1
41	Line Roller	YAS004-01A	1	111	Butt Cap Screw(3pk)	ZAS057-01A-KIT	1
42	Bail Wire Assembly	YAS347-01A	1				

Effective: August 2025