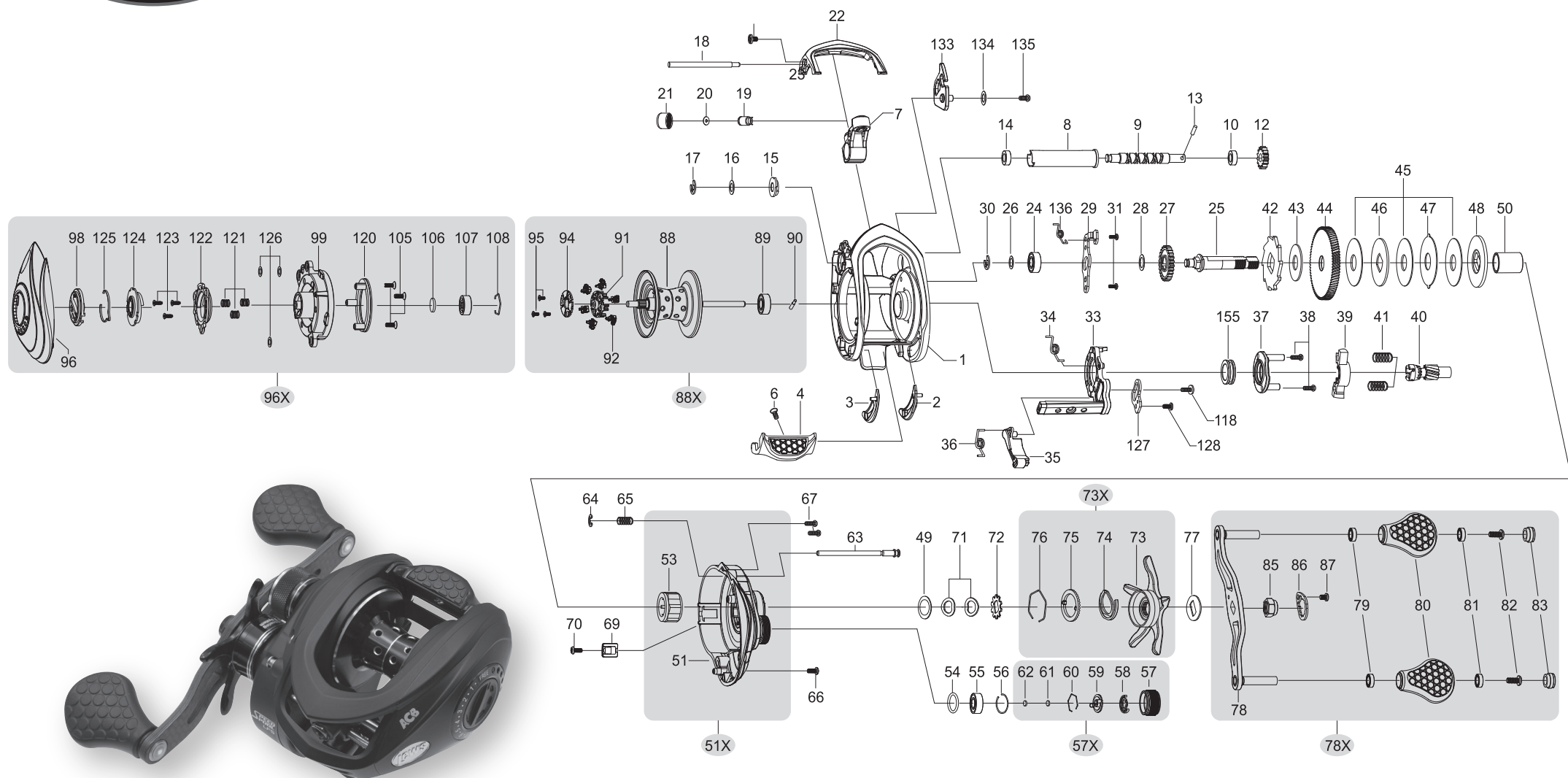




SPEED SPOOL[®] LFS
TP1HA, TP1SHA, TP1XHA



KEY #	PART NAME	KEY #	PART NAME	KEY #	PART NAME
1	FRAME	42	RATCHET	82	HANDLE KNOB SCREW-2
2	CLUTCH BAR PLATE-R	43	RATCHET WASHER	83	HANDLE KNOB CAP-2
3	CLUTCH BAR PLATE-L	44	DRIVE GEAR	85	HANDLE NUT
4	CLUTCH BAR	45	DRAG WASHER-L (3)	86	HANDLE NUT RETAINER
6	CLUTCH BAR SCREW	47	DRAG WASHER-A	87	HANDLE NUT RETAINER SCREW
7	LEVELWIND ASSEMBLY	48	DRAG WASHER-D (2)	88	SPOOL
8	PIPE	49	SLEEVE WASHER (OPT)	89	BALL BEARING
9	WORM SHAFT	50	SLEEVE	90	PIN
10	BALL BEARING	51	GEAR SIDEPLATE	91	BRAKE HOLDER
12	IDLER(S)	51X	GEAR SIDEPLATE ASSEMBLY	92	BRAKE SHOE ASSEMBLY -6
13	WORM SHAFT PIN	53	ONE-WAY CLUTCH	94	BRAKE HOLDER PLATE
14	BALL BEARING	54	O-RING	95	BRAKE HOLDER PLATE SCREW-3
15	WORM SHAFT BUSHING (B)	55	BALL BEARING	96	PALM SIDEPLATE
16	WORM SHAFT WASHER (OPT)	56	BEARING RETAINER	96X	PALM SIDEPLATE ASSEMBLY
17	E-RING	57	CAST CONTROL CAP	98	CONTROL DIAL
18	PILLAR	57X	CAST CONTROL CAP ASSEMBLY	99	SPOOL COVER
19	LEVELWIND PIN	57	CLICKER	105	SPOOL COVER SCREW-3
20	SPACER (OPTIONAL)	57	CLICK PLATE	106	SPOOL SPACER-A
21	LEVELWIND NUT	57	CLICK PLATE RETAINER	107	BALL BEARING
22	FRONT COVER	61	TENSION WASHER	108	BEARING RETAINER
23	FRONT COVER SCREW-2	62	SPOOL SPACER-B	118	CLICK SCREW
24	BALL BEARING	63	LOCKING PIN	120	BRAKE PLATE HOLDER ASSEMBLY
25	CRANKSHAFT	64	E-RING	121	SLIDE CAM SPRING-3
26	IDLER-L WASHER-A	65	LOCKING PIN SPRING	122	SLIDE CAM-H
27	IDLER-L	66	GEAR SIDEPLATE SCREW-A	123	SLIDE CAM SCREW
28	IDLER-L WASH-B	67	GEAR SIDEPLATE SCREW-B-2	124	SLIDE CAM-D
29	BEARING PLATE	69	LUBE PORT CAP	125	CLICK SPRING
30	E-RING	70	LUBE PORT CAP SCREW	126	SPOOL COVER SPACER (OPT)
31	BEARING PLATE SCREW-2	71	DRAG SPRING WASHER-2	127	LINK PLATE
33	CLUTCH CAM	73	CLICK PLATE ASSEMBLY	128	LINK PLATE SCREW
34	CLUTCH SPRING	73	STAR DRAG	133	SPEED KEEPER
35	KICK LEVER	77	HANDLE WASHER	134	SPEED KEEPER WASHER (OPTIONAL)
36	KICK LEVER SPRING	78	HANDLE	135	SPEED KEEPER SCREW
37	CAM PLATE	78X	HANDLE ASSEMBLY	136	SPEED KEEPER SPRING
38	CLUTCH CAM SCREW	79	BALL BEARING-2	155	BUSHING
39	PINION YOKE	80	HANDLE KNOB-2		
40	PINION GEAR	81	BALL BEARING-2		
41	PINION YOKE SPRING (2)				

LÉG.	NOM DE LA PIÈCE	LÉG.	NOM DE LA PIÈCE	LÉG.	NOM DE LA PIÈCE
1	BÂTI	42	ROCHET	82	VIS DE BOUTON-2
2	PLATEAU D'EMBRAYAGE-D	43	RONDELLE À ROCHET	83	VIS DE CAPUCHON DE BOUTON-2
3	PLATEAU D'EMBRAYAGE-G	44	PIGNON D'ENTRAÎNEMENT	85	ÉCROU DE POIGNÉE
4	EMBRAYAGE	45	RONDELLE DE FREIN-L (3)	86	RETENU D'ÉCROU DE POIGNÉE
6	VIS D'EMBRAYAGE	47	RONDELLE DE FREIN-A	87	VIS DE RETENUE D'ÉCROU DE POIGNÉE
7	ASSEMBLAGE DU DISPOSITIF D'ENROULEMENT UNIFORME	48	RONDELLE DE FREIN-D (2)	88	TAMBOUR
8	ANNÉAU DE RETENUE DE TYPE E	49	RONDELLE DE MANCHON (FACULT.)	88X	ASSEMBLAGE DU TAMBOUR
9	ARBRE DE VIS SANS FIN	50	MANCHON	89	ROULEMENT À BILLES
10	ROULEMENT À BILLES	51	FLASQUE D'ENGRENAGE	90	GOUILLE
12	POULIE(S)	51X	ASSEMBLAGE DU FLASQUE D'ENGRENAGE	91	SUPPORT DE FREIN
13	GOUILLE D'ARBRE DE VIS SANS FIN	53	EMBRAYAGE UNIDIRECTIONNEL	92	ASSEMBLAGE DU SABOT DE FREIN-6
14	ROULEMENT À BILLES	54	JOINT TORNIQUE	94	PLAQUE DE SUPPORT DE FREIN
15	BAGUE D'ARBRE DE VIS SANS FIN (B)	55	ROULEMENT À BILLES	95	VIS DE PLAQUE DE SUPPORT DE FREIN-3
16	RONDELLE D'ARBRE DE VIS SANS FIN (FACULT.)	56	RETENU DE ROULEMENT	96	FLASQUE CÔTÉ PALME
17	ANNÉAU DE RETENUE DE TYPE E	57	CAPUCHON DU SYSTÈME DE CONTRÔLE DU LANCER	96X	ASSEMBLAGE DU FLASQUE CÔTÉ PALME
18	PILLER	57X	ASSEMBLAGE DU CAPUCHON DU SYSTÈME DE CONTRÔLE DU LANCER	98	CADRAN DE RÉGLAGE
19	GOUILLE DU DISPOSITIF D'ENROULEMENT UNIFORME	57	CLIQUET	99	COUVERCLE DE TAMBOUR
20	ENTRETOISE (FACULTATIVE)	57	PIGNON DE CLIQUET	105	VIS DU COUVERCLE DE TAMBOUR-3
21	ÉCROU DU DISPOSITIF D'ENROULEMENT UNIFORME	57	RETENU DE BUTÉE DE CLIQUET	106	ENTRETOISE DE TAMBOUR-A
22	CARTER AVANT	61	RONDELLE DE TENSION	107	ROULEMENT À BILLES
23	VIS DE CARTER AVANT-2	62	ENTRETOISE DE TAMBOUR-B	108	RETENU DE ROULEMENT
24	ROULEMENT À BILLES	63	GOUILLE DE VERROUILLAGE	118	VIS D'EMBRAYAGE
25	VILEBREQUIN	64	ANNÉAU DE RETENUE DE TYPE E	120	ASSEMBLAGE DU SUPPORT DE LA PLAQUE DE FREIN
26	RONDELLE-A DE POULIE-L	65	RESSORT DE GOUILLE DE VERROUILLAGE	121	RESSORT DE CAME DE GLISSEMENT-3
27	POULIE-L	66	VIS DE CARTER D'ENGRENAGE-A	122	CAME DE GLISSEMENT-H
28	RONDELLE-B DE POULIE-L	67	VIS DE CARTER D'ENGRENAGE-B-2	123	VIS DE CAME DE GLISSEMENT
29	PLAQUE D'APPLI	69	BOUCHON DE PORT DE GRAISSAGE	124	CAME DE GLISSEMENT-D
30	ANNÉAU DE RETENUE DE TYPE E	70	VIS DE BOUCHON DE PORT DE GRAISSAGE	125	RESSORT DE CLIQUET
31	VIS DE PLAQUE D'APPLI-2	71	RONDELLE ÉLASTIQUE DE FREIN-2	126	ENTRETOISE DE CARTER DE TAMBOUR (FACULT.)
33	CAME D'EMBRAYAGE	72	ASSEMBLAGE DE BUTÉE DE CLIQUET	127	PLAQUE DE RACCORDEMENT
34	RESSORT D'EMBRAYAGE	73	FREIN ÉTOILE	128	VIS DE PLAQUE DE RACCORDEMENT
35	DOIGT D'EMBRAYAGE	73	ASSEMBLAGE DU FREIN ÉTOILE	133	SPEED KEEPER
36	RESSORT DE DOIGT D'EMBRAYAGE	77	RONDELLE DE POIGNÉE	134	RONDELLE DE SPEED KEEPER (FACULTATIVE)
37	DISQUE À CAMES	78	POIGNÉE	135	VIS DE SPEED KEEPER
38	VIS DE CAME D'EMBRAYAGE	78X	ASSEMBLAGE DE LA POIGNÉE	136	RESSORT DE SPEED KEEPER
39	ÉTRIER DE PIGNON	79	ROULEMENT À BILLES-2	155	BAGUE DE PALIER
40	ENGRENAGE À PIGNONS	80	BOUTON-2		
41	RESSORT D'ÉTRIER DE PIGNON (2)	81	ROULEMENT À BILLES-2		

MAINTENANCE AND CARE

When applying lubricant to your Speed Spool reel, avoid using multi-purpose oil. Use lightweight oils or greases made for fishing reels. Apply oil to all bearings, the crankshaft and the worm gear. Apply grease to the bushings, pinion gears, drive gears, and crank gears.

After usage, your reel should be inspected for dirt or sand and cleaned if excessive build-up is present. If your reel has come in contact with saltwater it is important to flush all parts with water, dry and re-lubricate your reel. Through diligent cleaning and maintenance your Lew's reel will provide you with years of reliability and sound performance.

ENTRETIEN ET SOIN

Lors du graissage de votre moulinet Speed Spool, évitez d'utiliser une huile à usages multiples. Utilisez des huiles ou des graisses légères prévues pour les moulinets de canne à pêche. Appliquez l'huile à tous les roulements, au vilebrequin et à la vis sans fin. Appliquez la graisse aux bagues de palier, aux engrenages à pignons, aux pignons d'entraînement et au vilebrequin.

Après l'avoir utilisé, le moulinet doit être inspecté pour déceler toute trace de saleté ou de sable, et nettoyé en cas d'accumulation excessive. Si votre moulinet a été en contact avec de l'eau de mer, il est important de rincer tous ses éléments à l'eau douce, de le sécher et de le lubrifier de nouveau. Avec des nettoyages et un entretien diligents, votre moulinet Lew's vous procurera des années de fonctionnement fiable et performant.

MANTENIMIENTO Y CUIDADO

Al aplicar lubricante a su carrete Speed Spool, evite usar aceite multiusos. Use aceites o grasas ligeras hechas para carretes de pesca. Aplique aceite a todos los rodamientos, el cigüeñal y el engranaje helicoidal. Aplique grasa a los bujes, engranajes de piñón, engranajes impulsores y engranajes del cigüeñal.

Después de usarlo, debe inspeccionar que el carrete no tenga polvo o arena y límpielo si hay una acumulación excesiva. Si su carrete ha tenido contacto con agua salada, es importante enjuagar todas las piezas con agua y volver a lubricar el carrete. Mediante una limpieza y mantenimiento diligente su carrete Lew's le proporcionará años de confiabilidad y desempeño sin problemas.

To remove palming sideplate pull locking pin (63) away from reel body.

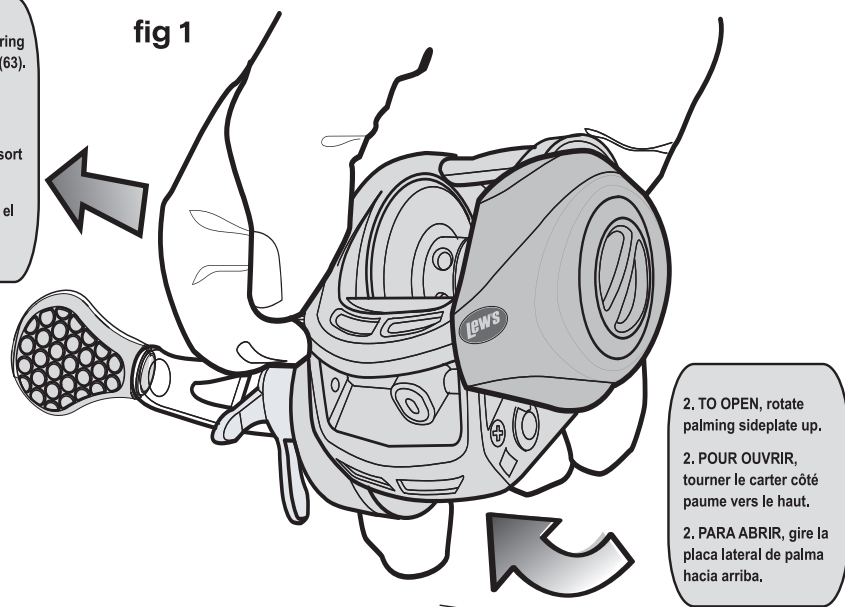
Pour enlever le carter côté paume, tirer la goupille de verrouillage (64) à l'écart du corps du moulinet.

Para retirar la placa lateral de palma jale el perno bloqueador (63) del cuerpo del carrete.

1. Pull and hold spring loaded locking pin(63).

1. Tirer et tenir la goupille de verrouillage à ressort (63).

1. Jale y sostenga el perno bloqueador cargado (63).



2. TO OPEN, rotate palming sideplate up.
2. POUR OUVRIR, tourner le carter côté paume vers le haut.
2. PARA ABRIR, gire la placa lateral de palma hacia arriba.

One Year Limited Warranty

For warranty registration go to lews.com

Garantie limitée de 1 an

Pour de l'information sur la garantie, allez à lews.com

Garantía limitada por un año

Para registrar la garantía, visite lews.com

For Warranty information and registration go to lews.com

Pour de l'information sur la garantie et l'enregistrement du produit, allez à lews.com Para registrar y obtener

información de la garantía, visite lews.com

For professional cleaning and maintenance contact: Lew's Speed Services Phone: 417-522-1093 FAX: 1-417-881-5387 service@lews.com

Pour le nettoyage et l'entretien professionnels, contactez : Lew's Speed Services Téléphone : 417-522-1093 Télécopieur : 1-417-881-5387 service@lews.com

Para obtener una limpieza y mantenimiento profesional comuníquese con: Lew's Speed Services Teléfono: 417-522-1093 FAX: 1-417-881-5387 service@lews.com



lews.com
H-18-1

TP1HA

Key #	Description	Order ID #		Key #	Description	Order ID #
1	FRAME	DY-104350040		61	TENSION WASHER	DY-100073011
2	CLUTCH BAR PLATE-R	DY-102881010		62	SPOOL SPACER-B	DY-100074011
3	CLUTCH BAR PLATE-L	DY-102882010		63	LOCKING PIN	DY-102903020
4	CLUTCH BAR ASSEMBLY	DY-102883090		64	E-RING	DY-100621010
6	CLUTCH BAR SCREW	DY-101507030		65	LOCKING PIN SPRING	DY-101308010
7	LEVEL WIND ASSEMBLY	DY-103715010		66	GEAR SIDE COVER SCREW-A	DY-100035020
8	PIPE	DY-101406010		67	GEAR SIDE COVER SCREW-B	DY-100028020
9	WORM SHAFT	DY-103460010		69	LUBE PORT CAP	DY-101698300
10	BALL BEARING	DY-104544010		70	LUBE PORT CAP SCREW	DY-101507010
12	IDLER-S	DY-100019010		71	DRAG SPRING WASHER	DY-100088010
13	WORM SHAFT PIN	DY-100020010		72	CLICK PLATE ASSEMBLY	DY-U00188030
14	BALL BEARING	DY-104544010		73X	STAR DRAG COMPLETE	DY-U02932062
15	WORM SHAFT BUSHING-B	DY-102438010		74	CLICKER	DY-101763010
16	WORM SHAFT WASHER	DY-100539030		75	CLICK PLATE	DY-101764010
17	E-RING	DY-100047010		76	CLICK PLATE RETAINER	DY-101766011
18	PILLAR	DY-104359010		77	HANDLE WASHER	DY-100933010
19	LEVEL WIND PIN	DY-100464011		78X	HANDLE COMPLETE	DY-104104030
20	SPACER(OPTIONAL)	DY-100025020		79	BALL BEARING	DY-104543010
21	LEVEL WIND NUT	DY-100288021		80	HANDLE KNOB	DY-103807010
22	FRONT COVER	DY-104353020		81	BALL BEARING	DY-104543010
23	FRONT COVER SCREW	DY-103235020		82	HANDLE KNOB SCREW	DY-100180010
24	BALL BEARING	DY-104542010		83	HANDLE KNOB CAP	DY-101492071
25	CRANK SHAFT	DY-104450011		85	HANDLE NUT	DY-100319020
26	IDLER-L WASHER-A	DY-100647050		86	HANDLE NUT RETAINER	DY-103642050
27	IDLER-L	DY-101938020		87	SCREW	DY-101202020
28	IDLER-L WASHER-B	DY-100646010		88X	SPOOL COMPLETE	DY-104384010
29	BEARING PLATE	DY-104411010		89	BALL BEARING	DY-101616010
30	E-RING	DY-100047010		90	PIN	DY-104399010
31	BEARING PLATE SCREW	DY-100028070		91	BRAKE HOLDER	DY-103670010
33	CLUTCH CAM	DY-102893010		92	BRAKE SHOE ASSEMBLY	DY-U03273010
34	CLUTCH SPRING	DY-102688010		94	BRAKE HOLDER PLATE	DY-103671010
35	KICK LEVER	DY-102307011		95	BRAKE HOLDER PLATE SCREW	DY-100526010
36	KICK LEVER SPRING	DY-104137010		96X	PALM SIDE PLATE ASSEMBLY	DY-UA4352030
37	CAM PLATE	DY-104354010		98	CONTROL DIAL	DY-102917010
38	CAM PLATE SCREW	DY-101177050		99	SPOOL COVER	DY-102920010
39	PINION YOKE	DY-102073010		105	SPOOL COVER SCREW	DY-100141010
40	PINION GEAR	DY-104367010		106	SPOOL SPACER-A	DY-101850010
41	PINION YOKE SPRING	DY-102465010		107	BALL BEARING	DY-100155010
42	RATCHET	DY-100818010		108	BEARING RETAINER	DY-102976010
43	RATCHET WASHER	DY-103772010		114	WASHER(OPTIONAL)	DY-100073011
44	DRIVE GEAR	DY-102870020		116	CAM PLATE SCREW	DY-103013020
45	DRAG WASHER-L	DY-102377010		120	BRAKE PLATE HOLDER ASSEMBLY	DY-103274010
46	DRAG WASHER-D1	DY-100057020		121	SLIDE CAM SPRING	DY-102665010
47	DRAG WASHER-A	DY-100985010		122	SLIDE CAM-H	DY-102395010
48	DRAG WASHER-D2	DY-100986010		123	SLIDE CAM SCREW	DY-100526020
49	SLEEVE WASHER(OPTIONAL)	DY-100144020		124	SLIDE CAM-D	DY-102394010
50	SLEEVE	DY-100418011		125	CLICK SPRING	DY-102002010
51X	GEAR SIDE PLATE ASSEMBLY	DY-U04351060		126	SPOOL COVER SPACER(OPTIONAL)	DY-102635020
53	ONE WAY CLUTCH	DY-101515010		127	LINK PLATE	DY-102894010
54	O-RING	DY-100209020		128	LINK PLATE SCREW	DY-103014010
55	BALL BEARING	DY-102381010		133	HOOK HOLDER	DY-102898020
56	BEARING RETAINER	DY-104461010		134	HOOK HOLDER WASHER	DY-101168020
57X	CAST CONTROL CAP ASSEMBLY	DY-U03164080		135	HOOK HOLDER SCREW	DY-100246030
58	CLICKER	DY-101674011		136	HOOK HOLDER SPRING	DY-102968010
59	CLICK PLATE	DY-101675011		155	BUSH	DY-104365010
60	CLICK PLATE RETAINER	DY-101543012				

TP1SHA

Key #	Description	Order ID #		Key #	Description	Order ID #
1	FRAME	DY-104350040		61	TENSION WASHER	DY-100073011
2	CLUTCH BAR PLATE-R	DY-102881010		62	SPOOL SPACER-B	DY-100074011
3	CLUTCH BAR PLATE-L	DY-102882010		63	LOCKING PIN	DY-102903020
4	CLUTCH BAR ASSEMBLY	DY-102883090		64	E-RING	DY-100621010
6	CLUTCH BAR SCREW	DY-101507030		65	LOCKING PIN SPRING	DY-101308010
7	LEVEL WIND ASSEMBLY	DY-103715010		66	GEAR SIDE COVER SCREW-A	DY-100035020
8	PIPE	DY-101406010		67	GEAR SIDE COVER SCREW-B	DY-100028020
9	WORM SHAFT	DY-103460010		69	LUBE PORT CAP	DY-101698300
10	BALL BEARING	DY-104544010		70	LUBE PORT CAP SCREW	DY-101507010
12	IDLER-S	DY-100019010		71	DRAG SPRING WASHER	DY-100088010
13	WORM SHAFT PIN	DY-100020010		72	CLICK PLATE ASSEMBLY	DY-U00188030
14	BALL BEARING	DY-104544010		73X	STAR DRAG COMPLETE	DY-U02932072
15	WORM SHAFT BUSHING-B	DY-102438010		74	CLICKER	DY-101763010
16	WORM SHAFT WASHER	DY-100539030		75	CLICK PLATE	DY-101764010
17	E-RING	DY-100047010		76	CLICK PLATE RETAINER	DY-101766011
18	PILLAR	DY-104359010		77	HANDLE WASHER	DY-100933010
19	LEVEL WIND PIN	DY-100464011		78X	HANDLE COMPLETE	DY-104104030
20	SPACER(OPTIONAL)	DY-100025020		79	BALL BEARING	DY-104543010
21	LEVEL WIND NUT	DY-100288021		80	HANDLE KNOB	DY-103807010
22	FRONT COVER	DY-104353020		81	BALL BEARING	DY-104543010
23	FRONT COVER SCREW	DY-103235020		82	HANDLE KNOB SCREW	DY-100180010
24	BALL BEARING	DY-104542010		83	HANDLE KNOB CAP	DY-101492071
25	CRANK SHAFT	DY-104450011		85	HANDLE NUT	DY-100319020
26	IDLER-L WASHER-A	DY-100647050		86	HANDLE NUT RETAINER	DY-103642050
27	IDLER-L	DY-101938020		87	SCREW	DY-101202020
28	IDLER-L WASHER-B	DY-100646010		88X	SPOOL COMPLETE	DY-104384010
29	BEARING PLATE	DY-104411010		89	BALL BEARING	DY-101616010
30	E-RING	DY-100047010		90	PIN	DY-104399010
31	BEARING PLATE SCREW	DY-100028070		91	BRAKE HOLDER	DY-103670010
33	CLUTCH CAM	DY-102893010		92	BRAKE SHOE ASSEMBLY	DY-U03273010
34	CLUTCH SPRING	DY-102688010		94	BRAKE HOLDER PLATE	DY-103671010
35	KICK LEVER	DY-102307011		95	BRAKE HOLDER PLATE SCREW	DY-100526010
36	KICK LEVER SPRING	DY-104137010		96X	PALM SIDE PLATE ASSEMBLY	DY-UA4352030
37	CAM PLATE	DY-104354010		98	CONTROL DIAL	DY-102917010
38	CAM PLATE SCREW	DY-101177050		99	SPOOL COVER	DY-102920010
39	PINION YOKE	DY-102073010		105	SPOOL COVER SCREW	DY-100141010
40	PINION GEAR	DY-104368010		106	SPOOL SPACER-A	DY-101850010
41	PINION YOKE SPRING	DY-102465010		107	BALL BEARING	DY-100155010
42	RATCHET	DY-100818010		108	BEARING RETAINER	DY-102976010
43	RATCHET WASHER	DY-103772010		114	WASHER(OPTIONAL)	DY-100073011
44	DRIVE GEAR	DY-102871020		116	CAM PLATE SCREW	DY-103013020
45	DRAG WASHER-L	DY-102377010		120	BRAKE PLATE HOLDER ASSEMBLY	DY-103274010
46	DRAG WASHER-D1	DY-100057020		121	SLIDE CAM SPRING	DY-102665010
47	DRAG WASHER-A	DY-100985010		122	SLIDE CAM-H	DY-102395010
48	DRAG WASHER-D2	DY-100986010		123	SLIDE CAM SCREW	DY-100526020
49	SLEEVE WASHER(OPTIONAL)	DY-100144020		124	SLIDE CAM-D	DY-102394010
50	SLEEVE	DY-100418011		125	CLICK SPRING	DY-102002010
51X	GEAR SIDE PLATE ASSEMBLY	DY-U04351070		126	SPOOL COVER SPACER(OPTIONAL)	DY-102635020
53	ONE WAY CLUTCH	DY-101515010		127	LINK PLATE	DY-102894010
54	O-RING	DY-100209020		128	LINK PLATE SCREW	DY-103014010
55	BALL BEARING	DY-102381010		133	HOOK HOLDER	DY-102898020
56	BEARING RETAINER	DY-104461010		134	HOOK HOLDER WASHER	DY-101168020
57X	CAST CONTROL CAP ASSEMBLY	DY-U03164080		135	HOOK HOLDER SCREW	DY-100246030
58	CLICKER	DY-101674011		136	HOOK HOLDER SPRING	DY-102968010
59	CLICK PLATE	DY-101675011		155	BUSH	DY-104365010
60	CLICK PLATE RETAINER	DY-101543012				

TP1XHA

Key #	Description	Order ID #		Key #	Description	Order ID #
1	FRAME	DY-104350040		61	TENSION WASHER	DY-100073011
2	CLUTCH BAR PLATE-R	DY-102881010		62	SPOOL SPACER-B	DY-100074011
3	CLUTCH BAR PLATE-L	DY-102882010		63	LOCKING PIN	DY-102903020
4	CLUTCH BAR ASSEMBLY	DY-102883090		64	E-RING	DY-100621010
6	CLUTCH BAR SCREW	DY-101507030		65	LOCKING PIN SPRING	DY-101308010
7	LEVEL WIND ASSEMBLY	DY-103715010		66	GEAR SIDE COVER SCREW-A	DY-100035020
8	PIPE	DY-101406010		67	GEAR SIDE COVER SCREW-B	DY-100028020
9	WORM SHAFT	DY-103460010		69	LUBE PORT CAP	DY-101698300
10	BALL BEARING	DY-104544010		70	LUBE PORT CAP SCREW	DY-101507010
12	IDLER-S	DY-100019010		71	DRAG SPRING WASHER	DY-100088010
13	WORM SHAFT PIN	DY-100020010		72	CLICK PLATE ASSEMBLY	DY-U00188030
14	BALL BEARING	DY-104544010		73X	STAR DRAG COMPLETE	DY-U02932212
15	WORM SHAFT BUSHING-B	DY-102438010		74	CLICKER	DY-101763010
16	WORM SHAFT WASHER	DY-100539030		75	CLICK PLATE	DY-101764010
17	E-RING	DY-100047010		76	CLICK PLATE RETAINER	DY-101766011
18	PILLAR	DY-104359010		77	HANDLE WASHER	DY-100933010
19	LEVEL WIND PIN	DY-100464011		78X	HANDLE COMPLETE	DY-104104030
20	SPACER(OPTIONAL)	DY-100025020		79	BALL BEARING	DY-104543010
21	LEVEL WIND NUT	DY-100288021		80	HANDLE KNOB	DY-103807010
22	FRONT COVER	DY-104353020		81	BALL BEARING	DY-104543010
23	FRONT COVER SCREW	DY-103235020		82	HANDLE KNOB SCREW	DY-100180010
24	BALL BEARING	DY-104542010		83	HANDLE KNOB CAP	DY-101492071
25	CRANK SHAFT	DY-104450011		85	HANDLE NUT	DY-100319020
26	IDLER-L WASHER-A	DY-100647050		86	HANDLE NUT RETAINER	DY-103642050
27	IDLER-L	DY-101938020		87	SCREW	DY-101202020
28	IDLER-L WASHER-B	DY-100646010		88X	SPOOL COMPLETE	DY-104384010
29	BEARING PLATE	DY-104411010		89	BALL BEARING	DY-101616010
30	E-RING	DY-100047010		90	PIN	DY-104399010
31	BEARING PLATE SCREW	DY-100028070		91	BRAKE HOLDER	DY-103670010
33	CLUTCH CAM	DY-102893010		92	BRAKE SHOE ASSEMBLY	DY-U03273010
34	CLUTCH SPRING	DY-102688010		94	BRAKE HOLDER PLATE	DY-103671010
35	KICK LEVER	DY-102307011		95	BRAKE HOLDER PLATE SCREW	DY-100526010
36	KICK LEVER SPRING	DY-104137010		96X	PALM SIDE PLATE ASSEMBLY	DY-UA4352030
37	CAM PLATE	DY-104354010		98	CONTROL DIAL	DY-102917010
38	CAM PLATE SCREW	DY-101177050		99	SPOOL COVER	DY-102920010
39	PINION YOKE	DY-102073010		105	SPOOL COVER SCREW	DY-100141010
40	PINION GEAR	DY-104369010		106	SPOOL SPACER-A	DY-101850010
41	PINION YOKE SPRING	DY-102465010		107	BALL BEARING	DY-100155010
42	RATCHET	DY-100818010		108	BEARING RETAINER	DY-102976010
43	RATCHET WASHER	DY-103772010		114	WASHER(OPTIONAL)	DY-100073011
44	DRIVE GEAR	DY-102872020		116	CAM PLATE SCREW	DY-103013020
45	DRAG WASHER-L	DY-102377010		120	BRAKE PLATE HOLDER ASSEMBLY	DY-103274010
46	DRAG WASHER-D1	DY-100057020		121	SLIDE CAM SPRING	DY-102665010
47	DRAG WASHER-A	DY-100985010		122	SLIDE CAM-H	DY-102395010
48	DRAG WASHER-D2	DY-100986010		123	SLIDE CAM SCREW	DY-100526020
49	SLEEVE WASHER(OPTIONAL)	DY-100144020		124	SLIDE CAM-D	DY-102394010
50	SLEEVE	DY-100418011		125	CLICK SPRING	DY-102002010
51X	GEAR SIDE PLATE ASSEMBLY	DY-U04351080		126	SPOOL COVER SPACER(OPTIONAL)	DY-102635020
53	ONE WAY CLUTCH	DY-101515010		127	LINK PLATE	DY-102894010
54	O-RING	DY-100209020		128	LINK PLATE SCREW	DY-103014010
55	BALL BEARING	DY-102381010		133	HOOK HOLDER	DY-102898020
56	BEARING RETAINER	DY-104461010		134	HOOK HOLDER WASHER	DY-101168020
57X	CAST CONTROL CAP ASSEMBLY	DY-U03164080		135	HOOK HOLDER SCREW	DY-100246030
58	CLICKER	DY-101674011		136	HOOK HOLDER SPRING	DY-102968010
59	CLICK PLATE	DY-101675011		155	BUSH	DY-104365010
60	CLICK PLATE RETAINER	DY-101543012				