



LSG1S MG, LSG1H MG, LSG1SH MG

Driven by innovation

Fueled with Passion

Feel the Difference!



Reel Specifications

Model	Weight (oz.)	Gear Ratio	Line Capacity (yd./lb.)	IPT
LSG1SMG	7.2	5.4:1	150/12	23"
LSG1HMG	7.2	6.4:1	120/12	28"
LSG1SHMG	7.2	7.1:1	120/12	31"

FEATURES:



- One-piece, lightweight graphite frame
- Premium 8 bearing system with stainless steel double shielded ball bearings and Zero-Reverse one-way clutch bearing
- Externally adjustable Magnetic Control System (MCS)
- Machined and anodized aluminum U-spool
- Durable Rulon drag system provides up to 10 lbs. drag power Zirconia line guide
- 95mm bowed aluminum handle with Lew's® custom SoftTouch contoured paddle

ATTENTION BRAIDED LINE USERS!

If your Lew's® Baitcast reel has pre-drilled holes in the spool, you may tie your braid directly to the spool, by passing the braid thru the provided holes and tying a uni-knot.

If your Lew's® baitcast reel does not have pre-drilled holes in the spool, you will need to first tie on and spool at least 20 revolutions of monofilament line, and then tie your braided line to the monofilament line, with either a back-to-back uni-knot or an Albright knot.

Continue to spool your reel as normal, keeping strong tension on the line to ensure the line is firmly wound onto the spool to keep from "digging in" to underlying line layers when pressure is put on the line from fighting fish.

FAILURE TO PROPERLY SPOOL BRAIDED LINE ONTO YOUR REELS SPOOL WILL RESULT IN LINE SLIPPAGE, AND THE IMPRESSION YOUR DRAG IS NOT WORKING PROPERLY.

Performance – Right out of the Box!

Your Laser MG Speed Spool® is designed for performance and functionality. From the way it conforms to your hand, to the way it reacts crisply and effortlessly to your command, you'll know the minute you grab onto the Speed Spool® that you've got a quality reel.

Your Laser MG Speed Spool® reel exploits several new developments which will allow you to set yourself apart from the competition.

Lightweight Graphite Frame and Sideplates

Your Laser MG Speed Spool® reel utilizes a lightweight graphite frame and sideplates. Lightweight plus strong, so you'll never have to worry about frame or gears twisting or torquing.

Lightweight Machined Aluminum U-spool

Machined Aluminum Spool

The spool on your Laser MG Speed Spool® reel has been engineered to maximize casting distance. Anodized to withstand oxidation and abrasion, machined and built for deep capacity.

Zero-Reverse Bearing



The handle on your Laser MG Speed Spool® reel will only rotate forward for rock solid hook setting power. When you release the handle it will hold its position because of anti-reverse bearings, never losing an inch on your catch; an invaluable property to have when you're pullin' it in.

Full-Release Magnetic Control System (MCS)

Magnetic Control System MCS

In order to combat backlash your Laser MG Speed Spool® reel is furnished with an externally adjustable, full-release magnetic braking system. As the spool accelerates it experiences magnetic resistance, which can be controlled with a dial on the palming sideplate. A full-release magnetic brake has the ability to be backed for enough away from the spool to completely negate any effect on the acceleration of the spool.



Bowed 95MM Aluminum Handle

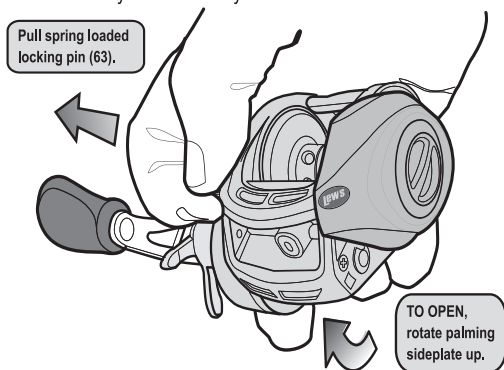
Our 95mm bowed aluminum handle will give you all the cranking power you need. The Lew's® custom paddle handle knobs are an added bonus and will provide comfortable fit and ease for all day fishing.

Maintenance and Care

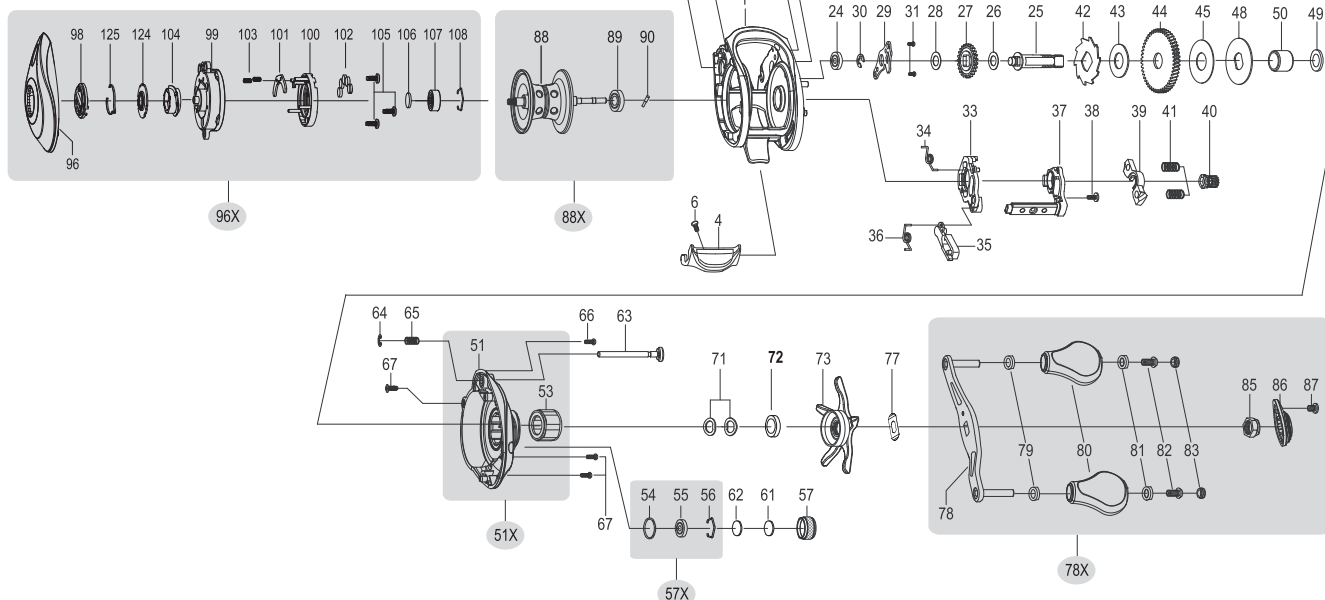
When applying lubricant to your Speed Spool® reel, avoid using multi-purpose oil. Use lightweight oils or greases made for fishing reels. Apply oil to all bearings, the crankshaft and the worm gear. Apply grease to the bushings, pinion gears, drive gears, and crank gears.

After usage, your reel should be inspected for dirt or sand and cleaned if excessive build-up is present. If your reel has come in contact with saltwater it is important to flush all parts with water, dry and re-lubricate your reel. Through diligent cleaning and maintenance your Lew's® reel will provide you with years of reliability and sound performance.

fig 1 To remove palming sideplate pull locking pin (63) away from reel body.



For professional cleaning and maintenance send your reel postage prepaid to:
 Lew's 3031 N. Martin Ave.
 Springfield, MO 65803
 Phone: 877-470-5397
 FAX: 1-417-881-5387
 lews.com



Lew's® warrants its products¹ to withstand normal² use for the purpose designed and intended when manufactured for a period of one (1) year from the original retail sale date to the original retail consumer. Lew's® will at its option repair or replace³ Lew's® products when required for the warranty period and return⁴ the product to the owner at no additional⁵ cost to the owner.

¹Numerous products have been manufactured under variations of the Lew's® name and under the Lew's® Logo by multiple businesses over the past 50 years. This warranty is specifically for products manufactured on behalf of Lew's® of Springfield, Missouri USA since January 1, 2010. Lew's® products manufactured by or on behalf of other entities prior to January 1, 2010 are not covered by this warranty. In all circumstances, this Warranty is Limited in Value to the original retail value of the product and is limited to actual damage to the Lew's® product and only the Lew's® product. ²Loss of a product, and loss/damage of a product or parts due to the attempted repair or servicing of a Lew's® product by any person or business other than Lew's® or Lew's® Authorized Warranty Service Agent, and damage caused by or resulting from abuse, misuse, lack of recommended maintenance, accident, acts of God, and shipping damages occurring in transit to Lew's® or Lew's® Authorized Agent are outside the scope of Lew's® Limited Warranty and will be repaired through Lew's® after warranty services at the expense of the consumer. ³Any products replaced by Lew's® will be new or remanufactured by a Lew's® Authorized Agent with the same or next model upgrade product. ⁴Lew's® will return warranted products to the consumer by reasonable means as determined by Lew's®. ⁵Express or expedited services are the responsibility of the consumer as is sending the product to Lew's® or Lew's® Authorized Agent, for Warranty Service. Lew's® Service Agents as authorized by Lew's® are the sole agents authorized to repair or replace Lew's® products under the terms of this warranty. Only written changes by an officer of Lew's® can alter the terms or conditions of this warranty.

This warranty gives you specific legal rights including additional rights extended by some states which do not allow certain exclusions and limitations. Any action brought against Lew's® for the purpose of settling a warranty dispute shall be brought and litigated in the State of Missouri, County of Greene.

KEY #	PART NAME	KEY #	PART NAME	KEY #	PART NAME
1	FRAME	37	CLUTCH LINK	77	LEAF SPRING
4	CLUTCH BAR	38	CLUTCH LINK SCREW	78	HANDLE
6	CLUTCH BAR SCREW	39	PINION YOKE	78X	HANDLE ASSEMBLY
7	LEVELWIND ASSEMBLY	40	PINION GEAR	79	BUSHING
8	PIPE	41	PINION YOKE SPRING (2)	80	HANDLE KNOB
9	WORM SHAFT	42	RATCHET	81	BALL BEARING (2)
10	BALL BEARING	43	RATCHET WASHER	82	HANDLE KNOB SCREW
12	IDLER(S)	44	DRIVE GEAR	83	HANDLE KNOB CAP
13	WORM SHAFT PIN	45	DRAG WASHER (L-3)	85	HANDLE NUT
15	WORM SHAFT BUSHING (B)	48	DRAG WASHER (D)	86	HANDLE NUT CAP
16	WORM SHAFT WASHER	49	SLEEVE WASHER (OPTIONAL)	87	SCREW
17	E-RING	50	SLEEVE	88	SPOOL
18	PILLAR	51	GEAR SIDEPLATE	88X	SPOOL ASSEMBLY
19	LEVELWIND PIN	51X	GEAR SIDEPLATE ASSEMBLY	89	BALL BEARING
20	SPACER (OPTIONAL)	53	ONE-WAY CLUTCH BEARING	90	PIN
21	LEVELWIND NUT	54	O-RING	96	PALMING SIDEPLATE
22	FRONT COVER	55	BALL BEARING	96X	PALMING SIDEPLATE ASSEMBLY
23	FRONT COVER SCREW (2)	56	BEARING RETAINER	98	CONTROL DIAL
24	BALL BEARING	57	CAST CONTROL CAP	99	SPOOL COVER
25	CRANKSHAFT	57X	CAST CONTROL CAP ASSEMBLY	101	MAGNET HOLDER PLATE-F
26	IDLER (L) WASHER (A)	61	TENSION WASHER	102	MAGNET (5)
27	IDLER (L)	62	SPOOL SPACER (B)	103	MAGNET HOLDER SPRING (2)
28	IDLER(L) WASHER (B)	63	LOCKING PIN	103	SLIDE CAM-F
29	BEARING PLATE	64	E-RING	105	SPOOL COVER SCREW (3)
30	E-RING	65	LOCKING PIN SPRING	106	SPOOL SPACER-A
31	BEARING PLATE SCREW	66	GEAR SIDEPLATE SCREW (A)	107	BALL BEARING
33	CLUTCH CAM	67	GEAR SIDEPLATE SCREW (B)	108	BEARING RETAINER
34	CLUTCH SPRING	71	DRAG SPRING WASHER (A-2)	124	SLIDE CAM-D
35	KICK LEVER	72	DRAG SPACER	125	CLICK SPRING
36	KICK LEVER SPRING	73	STAR DRAG		

LSG1SMG

Key #	Description	Order ID #		Key #	Description	Order ID #
1	FRAME	DY-102700010		50	SLEEVE	DY-101983010
4	CLUTCH BAR	DY-102707010		51X	GEAR SIDE PLATE ASSEMBLY	DY-U02702070
5	CLUTCH LINK	DY-102709011		53	ONE WAY CLUTCH	DY-102090010
6	CLUTCH BAR SCREW	DY-101507010		54	O-RING	DY-100071020
7	LEVEL WIND ASSEMBLY	DY-102717010		55	BALL BEARING	DY-104541010
8	PIPE	DY-101406010		56	BEARING RETAINER	DY-101588011
9	WORM SHAFT	DY-100017013		57X	CAST CONTROL CAP ASSEMBLY	DY-101817010
10	BALL BEARING	DY-104544010		61	TENSION WASHER	DY-100834010
11	WORM SHAFT BUSHING-A	DY-100145011		62	SPOOL SPACER-B	DY-100690010
12	IDLER-S	DY-100019010		63	LOCKING PIN	DY-103635010
13	WORM SHAFT PIN	DY-100020010		64	E-RING	DY-100621010
16	WORM SHAFT WASHER	DY-100539020		65	LOCKING PIN SPRING	DY-101308010
17	E-RING	DY-100047010		66	GEAR SIDE COVER SCREW-A	DY-100202030
18	PILLAR	DY-102711010		67	GEAR SIDE COVER SCREW-B	DY-100202020
19	LEVEL WIND PIN	DY-100464011		71	DRAG SPRING WASHER	DY-100088010
20	SPACER(OPTIONAL)	DY-100025010		73	STAR DRAG	DY-102033430
21	LEVEL WIND NUT	DY-100288021		77	LEAF SPRING	DY-100101010
22	FRONT COVER	DY-102701010		78X	HANDLE COMPLETE	DY-101806150
23	FRONT COVER SCREW	DY-100141020		79	BUSHING	DY-100196010
24	BALL BEARING	DY-104542010		80	HANDLE KNOB	DY-101812020
25	CRANK SHAFT	DY-100043012		81	BALL BEARING	DY-102950010
26	IDLER-L WASHER-A	DY-100548010		82	HANDLE KNOB SCREW	DY-100180010
27	IDLER-L	DY-101938020		83	HANDLE KNOB CAP	DY-100181050
28	IDLER-L WASHER-B	DY-100045020		85	HANDLE NUT	DY-100110010
29	BEARING PLATE	DY-102727010		86	HANDLE NUT CAP	DY-101700010
30	E-RING	DY-100047010		87	SCREW	DY-101202020
31	BEARING PLATE SCREW	DY-100135010		88X	SPOOL COMPLETE	DY-103077010
33	CLUTCH CAM	DY-102708010		89	BALL BEARING	DY-102970010
34	CLUTCH SPRING	DY-102688010		90	PIN	DY-100120010
35	KICK LEVER	DY-102307011		96X	PALM SIDE PLATE ASSEMBLY	DY-UA2980030
36	KICK LEVER SPRING	DY-102048010		98	CONTROL DIAL	DY-102917090
38	CLUTCH CAM SCREW	DY-100293010		99	SPOOL COVER	DY-102732010
39	PINION YOKE	DY-102073010		100	MAGNET HOLDER ASSEMBLY	DY-U02921010
40	PINION GEAR	DY-100886013		103	SPRING	DY-100486010
41	PINION YOKE SPRING	DY-102465010		104	SLIDE CAM-F	DY-102919010
42	RATCHET	DY-100818010		105	SPOOL COVER SCREW	DY-100141010
43	RATCHET WASHER	DY-102247010		106	SPOOL SPACER-A	DY-101850010
44	DRIVE GEAR	DY-101793010		107	BALL BEARING	DY-104541010
45	DRAG WASHER-L	DY-101531010		108	BEARING RETAINER	DY-102976010
48	DRAG WASHER-D	DY-101367010		125	CLICK SPRING	DY-102002010
49	SLEEVE WASHER(OPTIONAL)	DY-100086030		137	DRAG SPACER	DY-100087010

LSG1HMG

Key #	Description	Order ID #		Key #	Description	Order ID #
1	FRAME	DY-102700010		50	SLEEVE	DY-101983010
4	CLUTCH BAR	DY-102707010		51X	GEAR SIDE PLATE ASSEMBLY	DY-U02702080
5	CLUTCH LINK	DY-102709011		53	ONE WAY CLUTCH	DY-102090010
6	CLUTCH BAR SCREW	DY-101507010		54	O-RING	DY-100071020
7	LEVEL WIND ASSEMBLY	DY-102717010		55	BALL BEARING	DY-104541010
8	PIPE	DY-101406010		56	BEARING RETAINER	DY-101588011
9	WORM SHAFT	DY-100017013		57X	CAST CONTROL CAP ASSEMBLY	DY-101817010
10	BALL BEARING	DY-104544010		61	TENSION WASHER	DY-100834010
11	WORM SHAFT BUSHING-A	DY-100145011		62	SPOOL SPACER-B	DY-100690010
12	IDLER-S	DY-100019010		63	LOCKING PIN	DY-103635010
13	WORM SHAFT PIN	DY-100020010		64	E-RING	DY-100621010
16	WORM SHAFT WASHER	DY-100539020		65	LOCKING PIN SPRING	DY-101308010
17	E-RING	DY-100047010		66	GEAR SIDE COVER SCREW-A	DY-100202030
18	PILLAR	DY-102711010		67	GEAR SIDE COVER SCREW-B	DY-100202020
19	LEVEL WIND PIN	DY-100464011		71	DRAG SPRING WASHER	DY-100088010
20	SPACER(OPTIONAL)	DY-100025010		73	STAR DRAG	DY-102033440
21	LEVEL WIND NUT	DY-100288021		77	LEAF SPRING	DY-100101010
22	FRONT COVER	DY-102701010		78X	HANDLE COMPLETE	DY-101806150
23	FRONT COVER SCREW	DY-100141020		79	BUSHING	DY-100196010
24	BALL BEARING	DY-104542010		80	HANDLE KNOB	DY-101812020
25	CRANK SHAFT	DY-100043012		81	BALL BEARING	DY-102950010
26	IDLER-L WASHER-A	DY-100548010		82	HANDLE KNOB SCREW	DY-100180010
27	IDLER-L	DY-101938020		83	HANDLE KNOB CAP	DY-100181050
28	IDLER-L WASHER-B	DY-100045020		85	HANDLE NUT	DY-100110010
29	BEARING PLATE	DY-102727010		86	HANDLE NUT CAP	DY-101700010
30	E-RING	DY-100047010		87	SCREW	DY-101202020
31	BEARING PLATE SCREW	DY-100135010		88X	SPOOL COMPLETE	DY-103079010
33	CLUTCH CAM	DY-102708010		89	BALL BEARING	DY-102970010
34	CLUTCH SPRING	DY-102688010		90	PIN	DY-100120010
35	KICK LEVER	DY-102307011		96X	PALM SIDE PLATE ASSEMBLY	DY-UA2980030
36	KICK LEVER SPRING	DY-102048010		98	CONTROL DIAL	DY-102917090
38	CLUTCH CAM SCREW	DY-100293010		99	SPOOL COVER	DY-102732010
39	PINION YOKE	DY-102073010		100	MAGNET HOLDER ASSEMBLY	DY-U02921010
40	PINION GEAR	DY-100982013		103	SPRING	DY-100486010
41	PINION YOKE SPRING	DY-102465010		104	SLIDE CAM-F	DY-102919010
42	RATCHET	DY-100818010		105	SPOOL COVER SCREW	DY-100141010
43	RATCHET WASHER	DY-102247010		106	SPOOL SPACER-A	DY-101850010
44	DRIVE GEAR	DY-101532010		107	BALL BEARING	DY-104541010
45	DRAG WASHER-L	DY-101531010		108	BEARING RETAINER	DY-102976010
48	DRAG WASHER-D	DY-101367010		125	CLICK SPRING	DY-102002010
49	SLEEVE WASHER(OPTIONAL)	DY-100086030		137	DRAG SPACER	DY-100087010

LSG1SHMG

Key #	Description	Order ID #		Key #	Description	Order ID #
1	FRAME	DY-102700010		50	SLEEVE	DY-101983010
4	CLUTCH BAR	DY-102707010		51X	GEAR SIDE PLATE ASSEMBLY	DY-U02702090
5	CLUTCH LINK	DY-102709011		53	ONE WAY CLUTCH	DY-102090010
6	CLUTCH BAR SCREW	DY-101507010		54	O-RING	DY-100071020
7	LEVEL WIND ASSEMBLY	DY-102717010		55	BALL BEARING	DY-104541010
8	PIPE	DY-101406010		56	BEARING RETAINER	DY-101588011
9	WORM SHAFT	DY-100017013		57X	CAST CONTROL CAP ASSEMBLY	DY-101817010
10	BALL BEARING	DY-104544010		61	TENSION WASHER	DY-100834010
11	WORM SHAFT BUSHING-A	DY-100145011		62	SPOOL SPACER-B	DY-100690010
12	IDLER-S	DY-100019010		63	LOCKING PIN	DY-103635010
13	WORM SHAFT PIN	DY-100020010		64	E-RING	DY-100621010
16	WORM SHAFT WASHER	DY-100539020		65	LOCKING PIN SPRING	DY-101308010
17	E-RING	DY-100047010		66	GEAR SIDE COVER SCREW-A	DY-100202030
18	PILLAR	DY-102711010		67	GEAR SIDE COVER SCREW-B	DY-100202020
19	LEVEL WIND PIN	DY-100464011		71	DRAG SPRING WASHER	DY-100088010
20	SPACER(OPTIONAL)	DY-100025010		73	STAR DRAG	DY-102033450
21	LEVEL WIND NUT	DY-100288021		77	LEAF SPRING	DY-100101010
22	FRONT COVER	DY-102701010		78X	HANDLE COMPLETE	DY-101806150
23	FRONT COVER SCREW	DY-100141020		79	BUSHING	DY-100196010
24	BALL BEARING	DY-104542010		80	HANDLE KNOB	DY-101812020
25	CRANK SHAFT	DY-100043012		81	BALL BEARING	DY-102950010
26	IDLER-L WASHER-A	DY-100548010		82	HANDLE KNOB SCREW	DY-100180010
27	IDLER-L	DY-101938020		83	HANDLE KNOB CAP	DY-100181050
28	IDLER-L WASHER-B	DY-100045020		85	HANDLE NUT	DY-100110010
29	BEARING PLATE	DY-102727010		86	HANDLE NUT CAP	DY-101700010
30	E-RING	DY-100047010		87	SCREW	DY-101202020
31	BEARING PLATE SCREW	DY-100135010		88X	SPOOL COMPLETE	DY-103079010
33	CLUTCH CAM	DY-102708010		89	BALL BEARING	DY-102970010
34	CLUTCH SPRING	DY-102688010		90	PIN	DY-100120010
35	KICK LEVER	DY-102307011		96X	PALM SIDE PLATE ASSEMBLY	DY-UA2980030
36	KICK LEVER SPRING	DY-102048010		98	CONTROL DIAL	DY-102917090
38	CLUTCH CAM SCREW	DY-100293010		99	SPOOL COVER	DY-102732010
39	PINION YOKE	DY-102073010		100	MAGNET HOLDER ASSEMBLY	DY-U02921010
40	PINION GEAR	DY-100980013		103	SPRING	DY-100486010
41	PINION YOKE SPRING	DY-102465010		104	SLIDE CAM-F	DY-102919010
42	RATCHET	DY-100818010		105	SPOOL COVER SCREW	DY-100141010
43	RATCHET WASHER	DY-102247010		106	SPOOL SPACER-A	DY-101850010
44	DRIVE GEAR	DY-101756010		107	BALL BEARING	DY-104541010
45	DRAG WASHER-L	DY-101531010		108	BEARING RETAINER	DY-102976010
48	DRAG WASHER-D	DY-101367010		125	CLICK SPRING	DY-102002010
49	SLEEVE WASHER(OPTIONAL)	DY-100086030		137	DRAG SPACER	DY-100087010