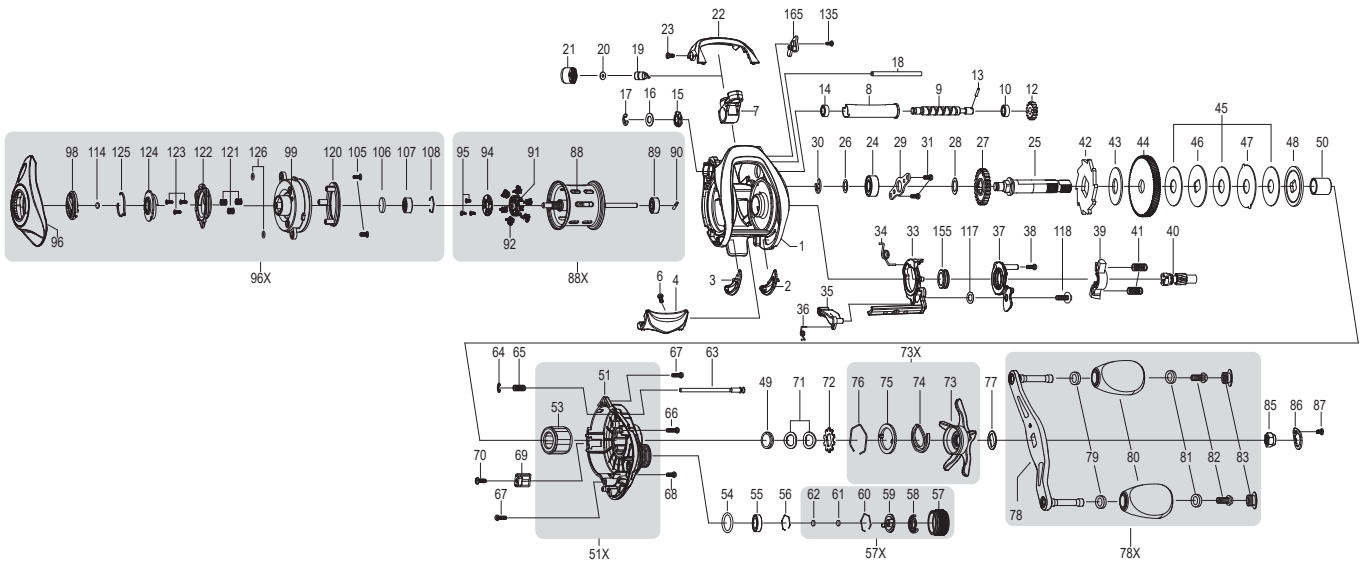


CUSTOM LITE SS(RH)



NO	PART NAME	NO	PART NAME	NO	PART NAME	NO	PART NAME	NO	PART NAME	NO	PART NAME	NO	PART NAME
1	FRAME	18	PILLAR	34	CLUTCH SPRING	49	SLEEVE WASHER(OPTIONAL)	63	LOCKING PIN	77	HANDLE WASHER	91	BRAKE HOLDER
2	CLUTCH BAR PLATE - R	19	LEVEL WIND PIN	35	KICK LEVER	50	SLEEVE	64	E-RING	78	HANDLE ASSEMBLY	92	BRAKE SHOE ASSEMBLY(*6)
3	CLUTCH BAR PLATE - L	20	SPACER(OPTIONAL)	36	KICK LEVER SPRING	51	GEAR SIDE COVER ASSEMBLY	65	LOCKING PIN SPRING	78X	HANDLE COMPLETE	94	BRAKE HOLDER PLATE
4	CLUTCH BAR	21	LEVEL WIND NUT	37	CAM PLATE	51X	GEAR SIDE COVER COMPLETE	66	GEAR SIDE COVER SCREW (A)	79	BALL BEARING (*2)	95	BRAKE HOLDER PLATE SCREW(*3)
6	CLUTCH BAR SCREW	22	FRONT COVER	38	CAM PLATE SCREW	53	ONE WAY CLUTCH	67	GEAR SIDE COVER SCREW (B*2)	80	HANDLE KNOB (*2)	96	PALM SIDE COVER ASSEMBLY
7	LEVEL WIND ASSEMBLY	23	FRONT COVER SCREW	39	PINION YOKE	54	O-RING	68	GEAR SIDE COVER SCREW (C)	81	BALL BEARING (*2)	96X	PALM SIDE COVER COMPLETE
8	PIPE	24	BALL BEARING	40	PINION GEAR	55	BALL BEARING	69	LUBE PORT CAP	82	HANDLE KNOB SCREW (*2)	98	CONTROL DIAL
9	WORM SHAFT	25	CRANK SHAFT	41	PINION YOKE SPRING(*2)	56	BEARING RETAINER	70	LUBE PORT CAP SCREW	83	HANDLE KNOB CAP (*2)	99	SPOOL COVER
10	BALL BEARING	26	IDLER(L) WASHER (A)(OPTIONAL)	42	RATCHET	57	CAST CONTROL CAP	71	DRAG SPRING WASHER (*2)	85	HANDLE NUT	105	SPOOL COVER SCREW (*2)
12	IDLER(S)	27	IDLER(L)	43	RATCHET WASHER	57X	CAST CONTROL CAP ASSEMBLY	72	CLICK HOLDER	86	HANDLE NUT RETAINER	106	SPOOL SPACER(A)
13	WORM SHAFT PIN	28	IDLER(L) WASHER (B)	44	DRIVE GEAR	58	CLICKER	73	STAR DRAG	87	SCREW	107	BALL BEARING
14	BALL BEARING	29	BEARING PLATE	45	DRAG WASHER (L*3)	59	CLICK PLATE	73X	STAR DRAG ASSEMBLY	88	SPOOL ASSEMBLY	108	BEARING RETAINER
15	WORM SHAFT BUSHING	30	E-RING	46	DRAG WASHER (D1)	60	CLICK PLATE RETAINER	74	CLICKER	88X	SPOOL COMPLETE	114	WASHER(OPTIONAL)
16	WORM SHAFT WASHER(OPTIONAL)	31	BEARING PLATE SCREW (*2)	47	DRAG WASHER (A)	61	TENSION WASHER	75	CLICK PLATE	89	BALL BEARING	117	CLUTCH WASHER
17	E-RING	33	CLUTCH CAM	48	DRAG WASHER (D2)	62	SPOOL SPACER (B)	76	CLICK PLATE RETAINER	90	PIN	118	CLUTCH SCREW

CUSTOM LITE SS (LH)

